

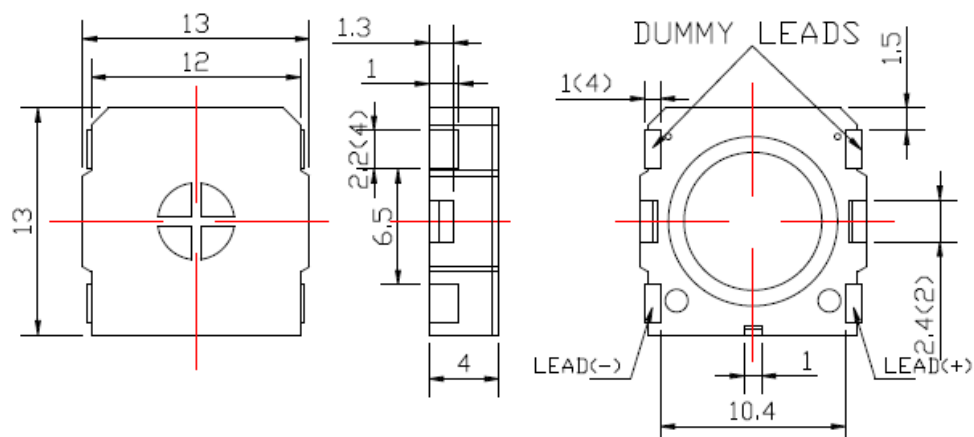
**Lautsprecher LSF-13SMD2** Art.-Nr.: 107033SA

**Specification :**

1	Rated Input Power	0.7W
2	Max Input Power	1.0W
3	Rated Impedance	8Ω±15%
4	Sound Pressure Level S.P.L.	88dB (0.5W/0.1m)±3dB
5	Resonance Frequency (Fo.)	850±20%Hz
6	Frequency Range	F0~20kHz
7	Distortion	Less than 5% at 2kHz input Rated Power
8	Magnet	Rare earth permanent (SMCO) 6x1mm
9	Weight (g)	1.1
10	Temperature	Operating: -30~+85°C Storage: -40~+85°C
11	RoHS	Yes

**Dimensions :**

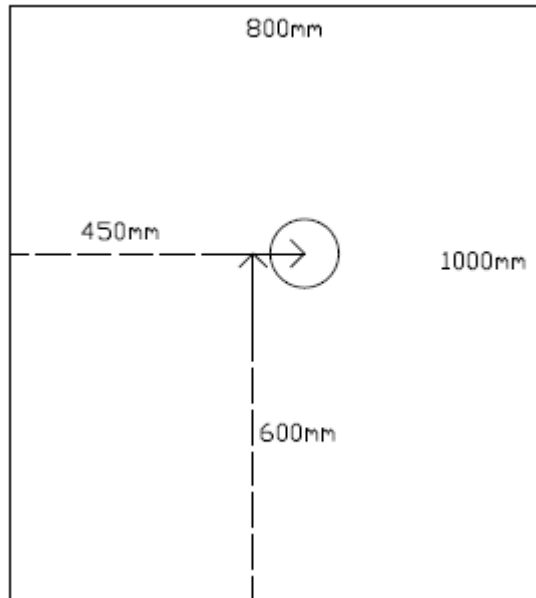
(Unit :mm)



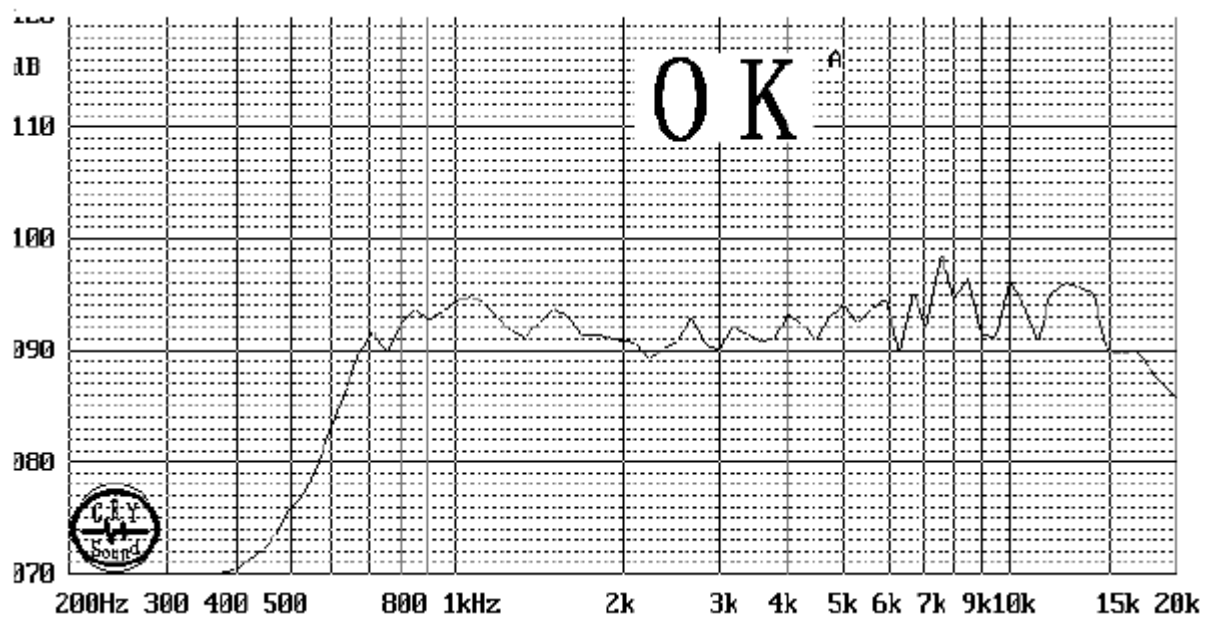
Version 1 / 10/2021

**Lautsprecher LSF-13SMD2** Art.-Nr.: 107033SA

**Measuring Method :**

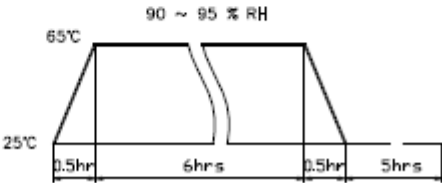


**Frequency Response :**



**Lautsprecher LSF-13SMD2** Art.-Nr.: 107033SA

**Environment Test :**

ITEM		SPECIFICATIONS
01	High temp. Test	Keep 96 hours at $+85^{\circ}\text{C} \pm 3^{\circ}\text{C}$ and leave 3 hours in normal temperature and then check
02	Low temp. Test	Keep 96 hours at $-40^{\circ}\text{C} \pm 3^{\circ}\text{C}$ and leave 3 hours in normal temperature and then check
03	Humidity test	Keep 96 hours at $+40^{\circ}\text{C} \pm 3^{\circ}\text{C}$ relative humidity 92-95% and leave 3 hours in normal temperature and then checked.
04	Temp./Humidity cycle	<p>The part shall be subjected 5 cycles. One cycle shall be 12 hours and consist of;</p> 
05	Thermal cycle test.	Low temperature: $-40^{\circ}\text{C} \pm 3^{\circ}\text{C}$ , temperature: $+85^{\circ}\text{C} \pm 3^{\circ}\text{C}$ , cycle: 1 hour/cycle each, and then keep 5 cycles in a room.
06	Vibration	10-55-10Hz sin-wave sweep 15min. 5G(constant) X,Y, Z 3 direction. 2 hours each, total 6 hours.
07	Fix drop test	Fix on jig. Then drop from 152cm height to the concrete floor X,y, z 6 direction. 5 times each, total 30 times.
08	Free drop test	Free drop from 100cm height to the concrete floor X,Y, Z 6 direction. 1 times each, total 6 times.
09	Load test	Rated Power White noise is applied for 96 hours
10	Max Power test	Max power 1 min. on - 2 min. off 10 cycles.
11	Terminal strength test	Capable of withstand 1kg load for 30 seconds without resulting in any damage or rejection.
<p><b>Criterion :</b> After these test , the change of S.P.L shall be within <math>\pm 3</math> dB</p>		

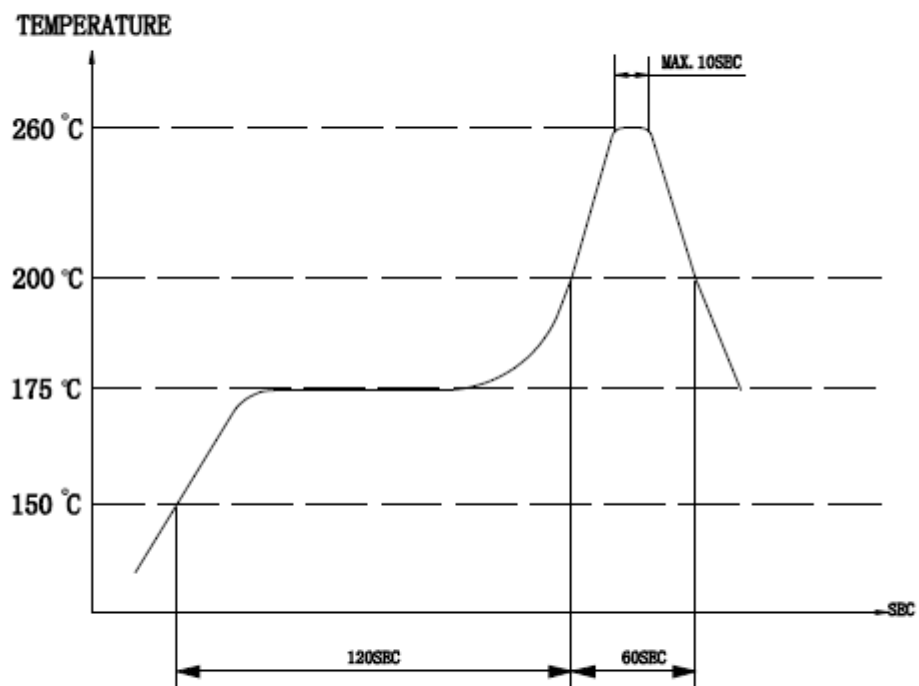
**Lautsprecher LSF-13SMD2** Art.-Nr.: 107033SA

---

**Soldering Condition :**

(1) Recommendable reflow soldering condition is as follows  
(Reflow soldering is twice)

Note: It is requested that reflow soldering should be executed  
after heat of product goes down to normal.



Heat resistant line  
(Used when heat resistant reliability test is performed)

(2) Manual soldering

Manual soldering temperature 350° C within 5 sec.

**Lautsprecher LSF-13SMD2** Art.-Nr.: 107033SA

**Packing :**

