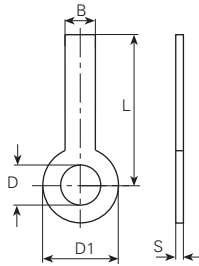


Werkstoff/Matière/Material
 .6 = Messing/laiton/brass

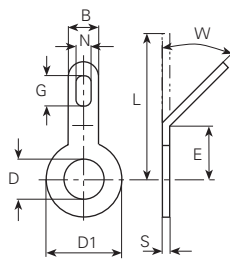
■ = Oberflächen/Surface/Surface-plating
 Seite/page/page 5.011



øD mm	L mm	øD1 mm	B mm	S mm	Artikelnummer Numéro d'article Part-No.
3.2	21	5.5	1.5	0.5	2048.6■
	29	5.5	1.5	0.5	2056.6■
	36	5.5	1.5	0.5	2057.6■

Werkstoff/Matière/Material
 .6 = Messing/laiton/brass

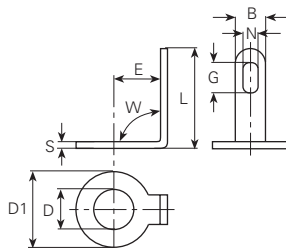
■ = Oberflächen/Surface/Surface-plating
 Seite/page/page 5.011



45°										
øD mm	W mm	L mm	E mm	øD1 mm	B mm	N mm	G mm	S mm	DIN	Artikelnummer Numéro d'article Part-No.
3.2	45°	9	3.2	5.5	3	1.7	3.2	0.3		20345.6■
	45°	12	4.3	5.5	3	1.7	3.2	0.5	41496-B1-3x12	20645.6■
	45°	12	4.2	5.5	3	1.7	3.2	0.8		2060845.6■
4.3	45°	12	5.5	6.5	3	1.7	3.2	0.5	41496-B1-4x12	20745.6■

Werkstoff/Matière/Material
 .2 = Bronze/bronze
 .6 = Messing/laiton/brass

■ = Oberflächen/Surface/Surface-plating
 Seite/page/page 5.011



90°										
øD mm	W mm	L mm	E mm	øD1 mm	B mm	N mm	G mm	S mm	Artikelnummer Numéro d'article Part-No.	
3.2	90°	6	3.2	5.5	3	1.7	3.2	0.3	200390.6■	
	90°	8	4.3	5.5	3	1.7	3.2	0.5	200690.6■	
	90°	8	2.5	5.5	3	1.7	3.2	0.5	201990.2■	
4.3	90°	7	5.5	6.5	3	1.7	3.2	0.5	200790.6■	