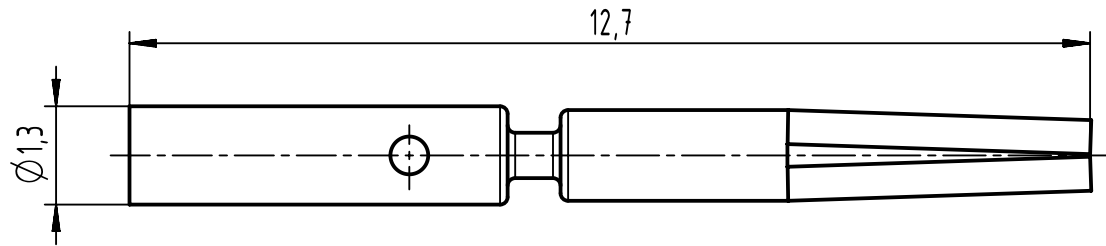
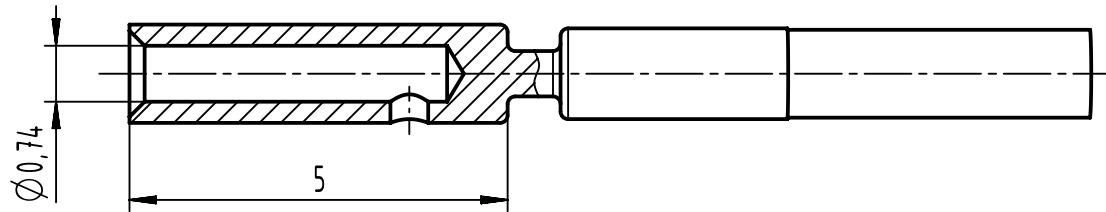


1 2 3 4 5 6

A



B

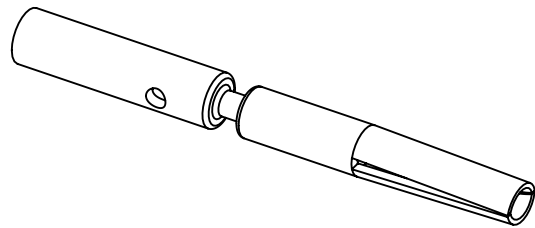


C


this crimp contact should be processed with:

locator 09 99 000 0635  
hand crimping tool 09 99 000 0501

Performance Level	PL1
-------------------	-----



D

	All rights reserved		Scale 10:1		Free size tol.		Ref.	
	Department EL PD		Created by HASSE	Inspected by 104.122	Standardisation SAP_WFRT	Date 2022-01-19	State Final Release	
HARTING D-32339 Espelkamp			Title female contact crimp $\varnothing 0.6$ AWG 26-23				Doc-Key / ECM-Nr. 100556302/UGD/001/C 500000210034	
			Type TB	Number 21011009021		Rev. C	Page 1/1	