

# Talema Elektronik GmbH

Sembdnerstr.5, Postfach 2523, 82110, Germering.

Tel : ++49 89 841 00-0,

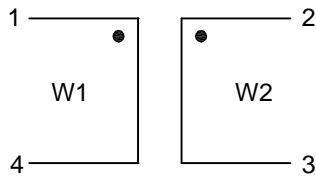
Fax : ++49 89 841 00 25

Email : [info@talema.de](mailto:info@talema.de)



Customer	--	Page : 1 of 1 Date : 12th Nov '08
Product	Current Compensated Choke	
Part No	21228	
Customer Part No	--	

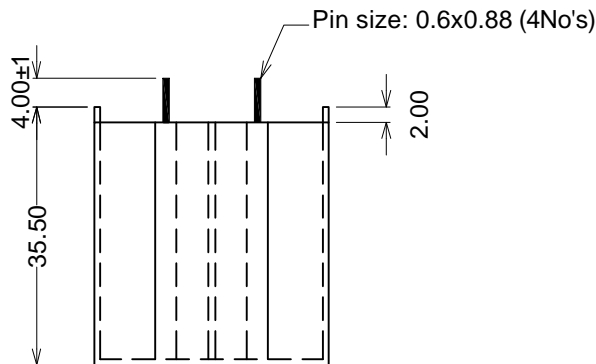
## SCHEMATIC:



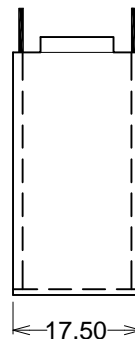
## ELECTRICAL SPECIFICATIONS @25°C:

- 1)  $L_o / Wdg = 3.30 \text{ mH} \pm 30\% @ 10\text{kHz}/0.1\text{V}$
- 2)  $DCR / Wdg = 35.0 \text{ mOhms (Typ)}$
- 3) H.V. Test:  
 $Wdg - Wdg = 1.50\text{KVrms}/50\text{Hz}/2\text{sec}$
- 4) Voltage = 250 Vac
- 5) Rated current = 4A - referred to 250V-50Hz  
 - and +60° ambient temperature
- 6) Climatic category = DIN GKC (-40° to +125°C; Humidity cat. C)

## MECHANICAL SPECIFICATIONS:

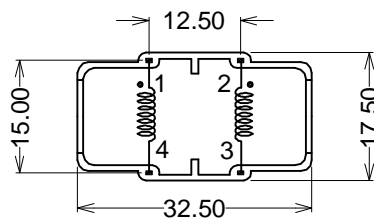


Front View:



Side View:

Case accordance with UL94-V0



Pin View:

## Marking on Case:

TALEMA IN W/Y  
21228

Unit : mm

Pin pitch tolerance : ±0.2mm



Rev.	Description	Date	Name
3			
2			
1			
0	Initial issue	12.11.08	K.Veerappan

ISSUE : 1

REV : 0