

**SMD-Signalgeber (ohne Ansteuerung) SMD-08A03** Art.-Nr.: 220004

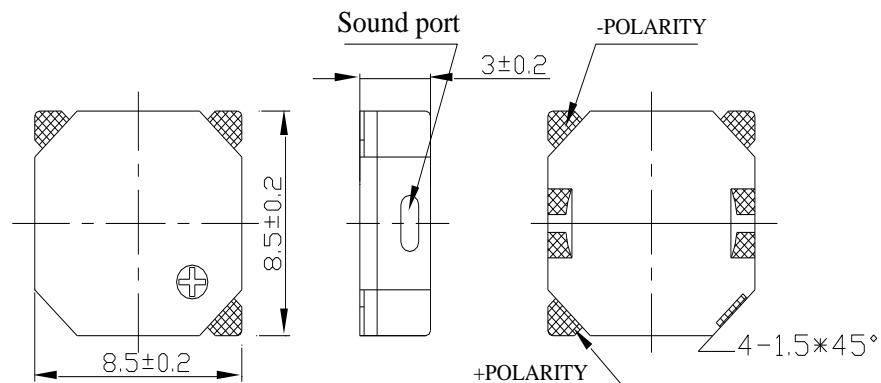
**Specification :**

TYPE	UNIT	SMD-08A03
◆ Min. Sound Output at 10cm	dB	85
Rated Voltage	V <sub>0-p</sub>	3
Operating Voltage	V <sub>0-p</sub>	2~4
Resonant Frequency	Hz	2730
◆ Max. Current Consumption	mA	70
Coil Resistance	Ω	16 ± 5
Case material and colour		LCP/black
Operating Temperature	°C	-20~+70
Storage Temperature	°C	-30~+80
Weight	g	0.6

◆ Value applying at (rated voltage, 2730Hz, 1/2 duty square wave)

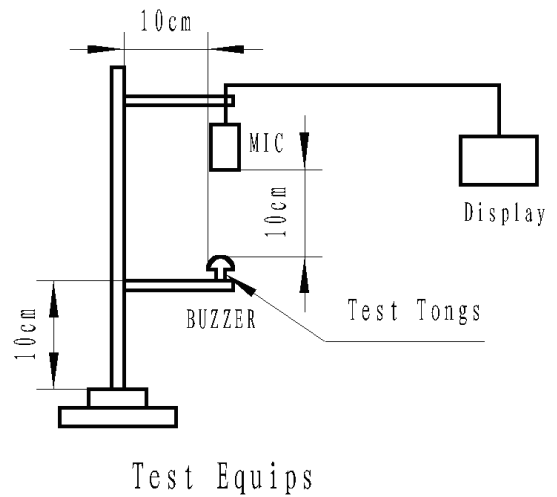
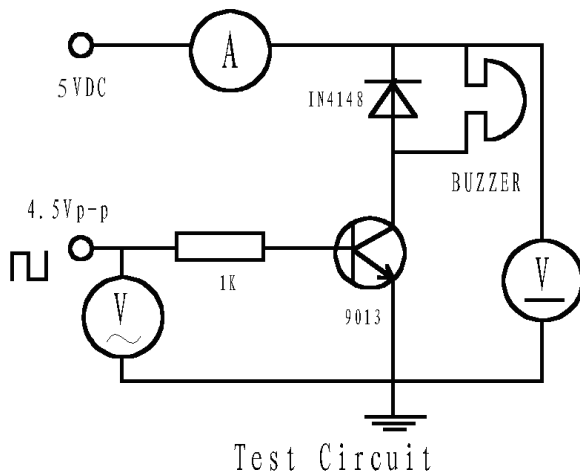
**Dimensions :**

(Unit : mm)

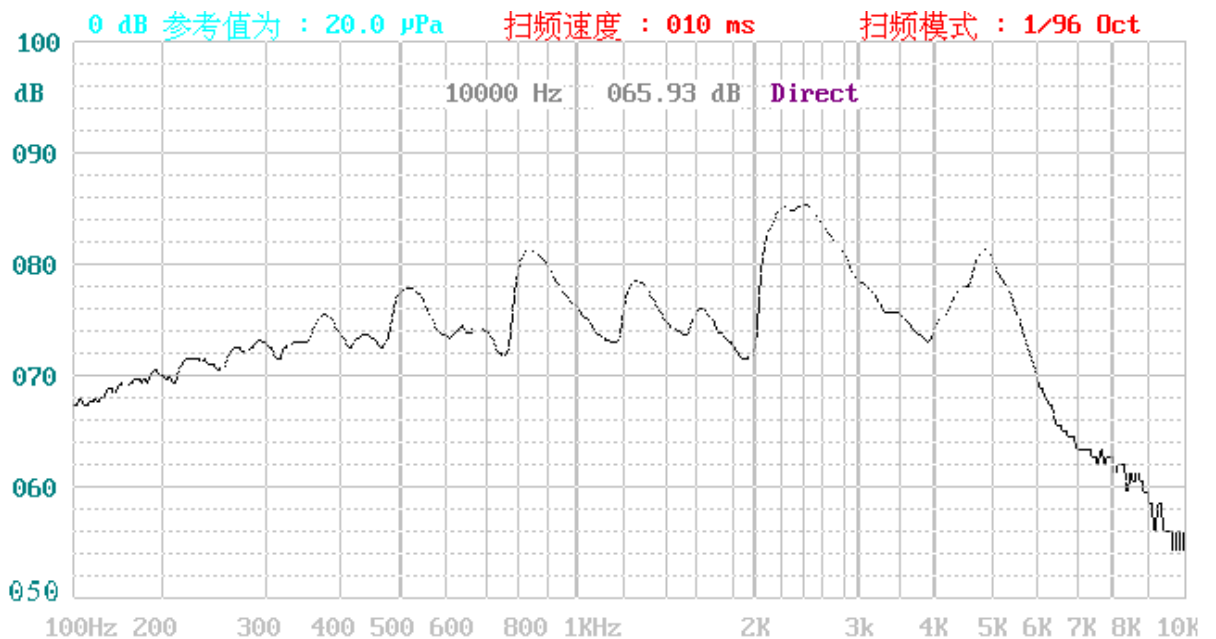


**SMD-Signalgeber (ohne Ansteuerung) SMD-08A03** Art.-Nr.: 220004

**Test Method :**

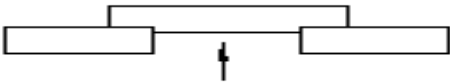


**Frequency Method :**



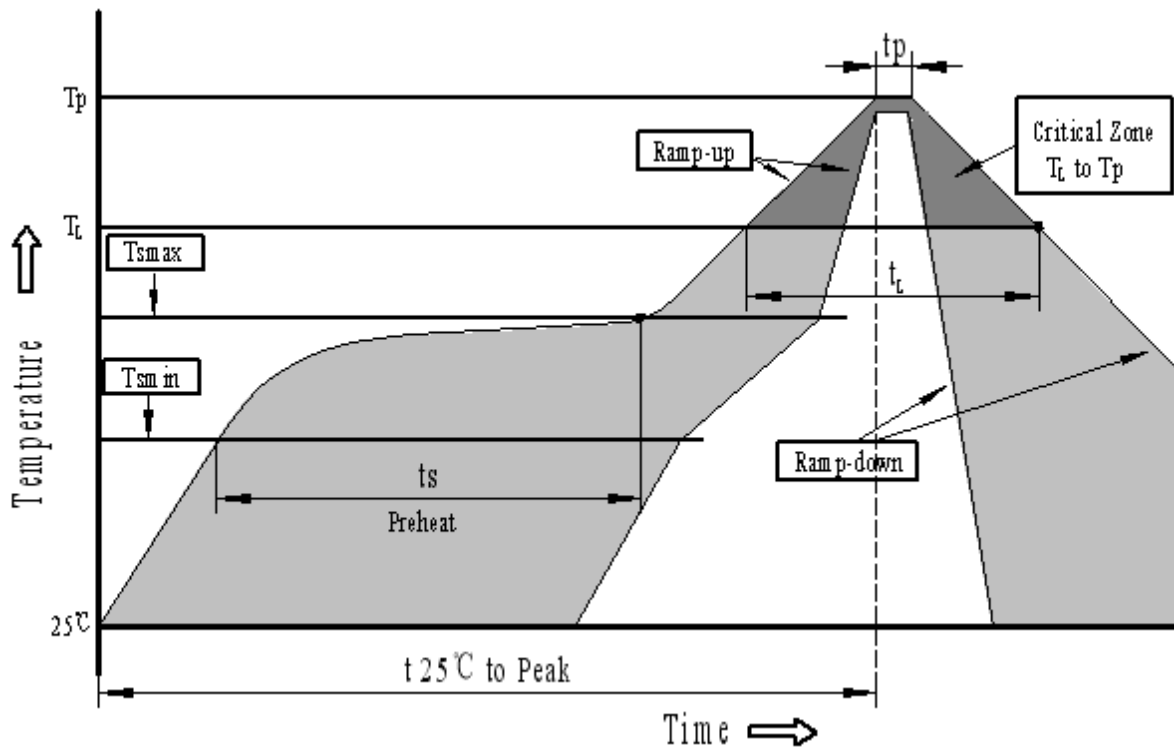
**SMD-Signalgeber (ohne Ansteuerung) SMD-08A03** Art.-Nr.: 220004

**Reliably Test :**

NO.	ITEM	TESTING CONDITION	VARIANCE AFTER TEST
1	High temp. storage life	The part shall be capable of withstanding a storage temperature is +120°C for 120 hours	After the test the part shall meet specifications without any degradation in appearance and performance except SPL shall be initial value±10dB or more.
2	Low temp. storage life	The part shall be capable of withstanding a storage temperature is -40°C for 120 hours	
3	Temp. Cycle	Total 5 cycles, 1 cycle consisting of -40±2°C, 30 minutes 20±5°C 15 minutes 120±2°C, 30 minutes 20±5°C 15 minutes	
4	Humidity Test	30±2°C, 90~95% RH, 120 hours	
5	Vibration Test	The part shall be subjected to a vibration cycle is 10Hz in a period of 1 minute. Total peak amplitude shall be 1.52mm(9.3g). The vibration test shall consist of 2 hours per plane in each three mutually perpendicular planes for a total time of 6 hours.	
6	Shock	Sounder shall be measured after being applied shock (980m/s <sup>2</sup> ) for each three mutually perpendicular directions to each of 3 times by half sine wave.	
7	Drop Test	Dropped naturally from 700mm height onto the surface of 10mm thick wooden board. 2 directions-upper and side of the part are to be applied.	
8	Lead pull	The part shall be pushed with a force of 9.8N for 10±1 seconds behind the part. 	After the test part shall meet specifications without any degradation in appearance and performance.
9	Recommended temp. Profile for Reflow Oven	Shown in Fig.1	

**SMD-Signalgeber (ohne Ansteuerung) SMD-08A03** Art.-Nr.: 220004

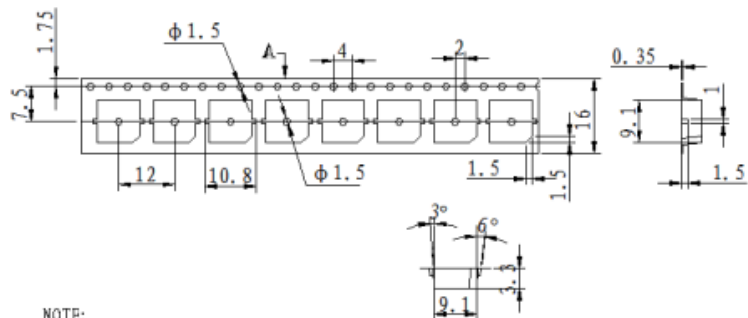
**Recommended Temp. Profile for Reflow Oven (Fig.1)**



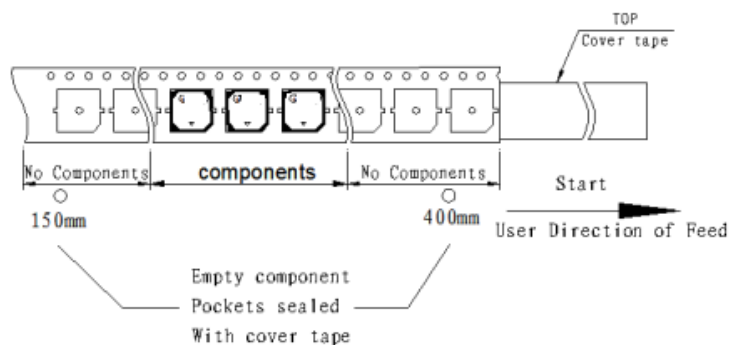
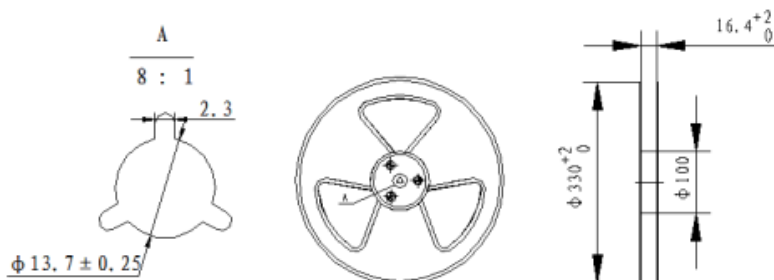
Profile Feature	Pb-Free Assembly
Average ramp-up rate( $T_L$ to $T_p$ )	3°C/second max.
Preheat	
-Temperature Min.( $T_{smin}$ )	150°C
-Temperature Min.( $T_{smax}$ )	200°C
-Temperature Min.( $t_s$ )	60~180 seconds
$T_{smax}$ to $T_L$	
-Ramp-up Rate	3°C/second max.
Time maintained above:	
- Temperature( $T_L$ )	217°C
-Time( $T_L$ )	60~150 seconds
Peak temperature( $T_p$ )	250°C+0/-5°C
Time within 5°C of actual Peak temperature ( $t_p$ )	6 seconds max.
Ramp-down Rate	6°C/second max.
Time 25°C to Peak Temperature	8 minutes max.

**SMD-Signalgeber (ohne Ansteuerung) SMD-08A03 Art.-Nr.: 220004**

**Packing :**



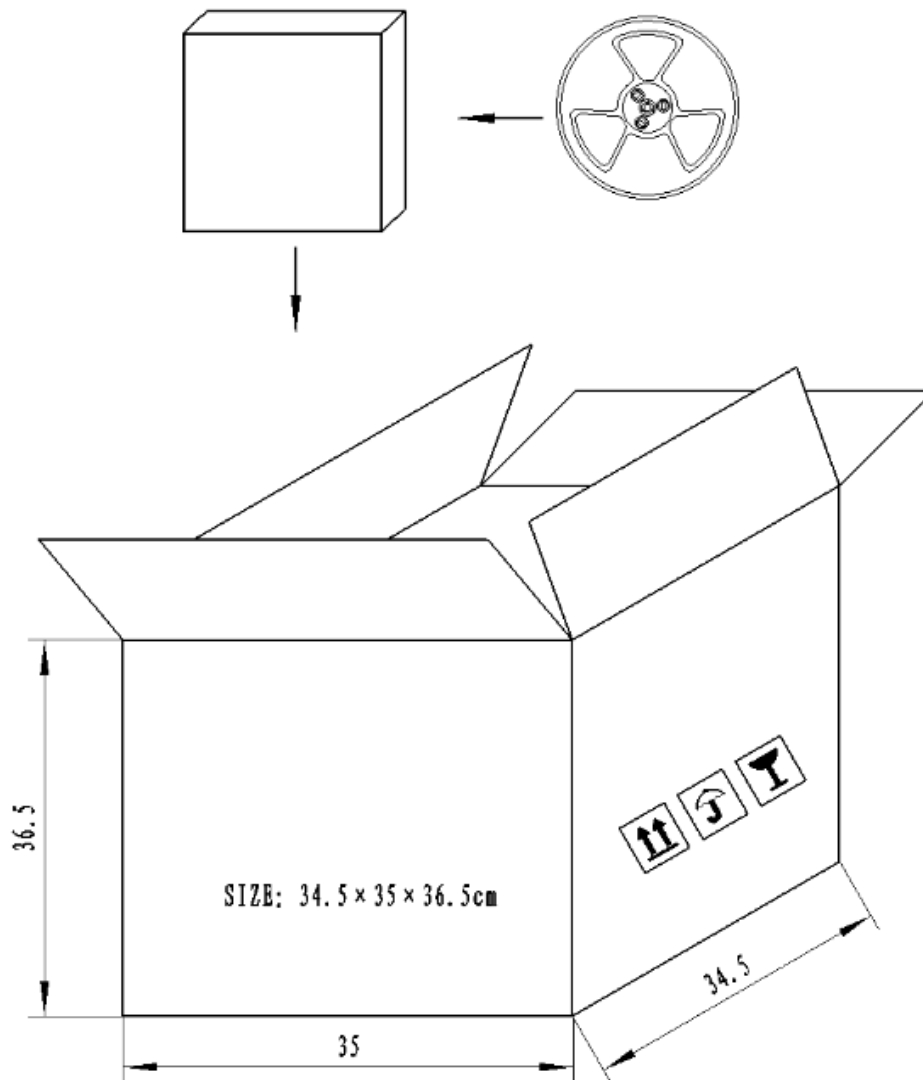
- NOTE:
1. 10 sprocket hole pitch cumulative tolerance  $\pm 0.20$ mm.
  2. All dimensions meet EIA-481-D requirements.
  3. Thickness:  $0.35 \pm 0.05$ mm.
  4. Component loaded per 13' reel: 1000pcs.



**SMD-Signalgeber (ohne Ansteuerung) SMD-08A03** Art.-Nr.: 220004

---

**Packing :**



**NOTES:**

- 1.1000 PCS per box
- 2.Total 10 boxes per carton
- 3.Total 10000 PCS carton