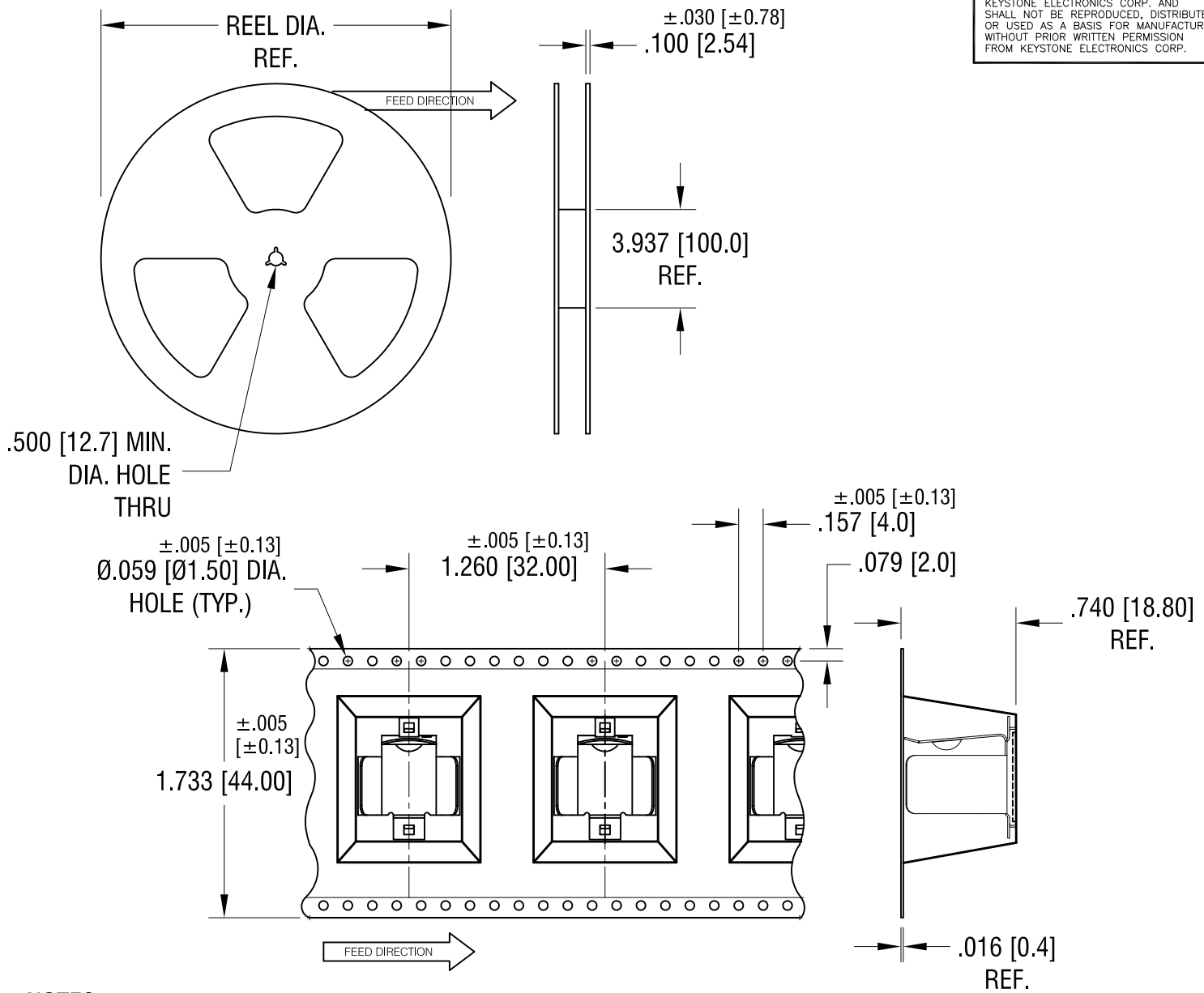


THIS DOCUMENT IS THE PROPERTY OF KEYSTONE ELECTRONICS CORP. AND SHALL NOT BE REPRODUCED, DISTRIBUTED OR USED AS A BASIS FOR MANUFACTURE WITHOUT PRIOR WRITTEN PERMISSION FROM KEYSTONE ELECTRONICS CORP.



NOTES:

TAPE AND REEL SPECIFICATIONS:

1. TAPE:

MAT'L - ALL CONDUCTIVE POLYSTYRENE CARRIER
ANSI/EIA-481 STANDARD

2. REEL:

15.0 [380.8] DIA. 75 PIECES
OF PART NO. 254 PER REEL.

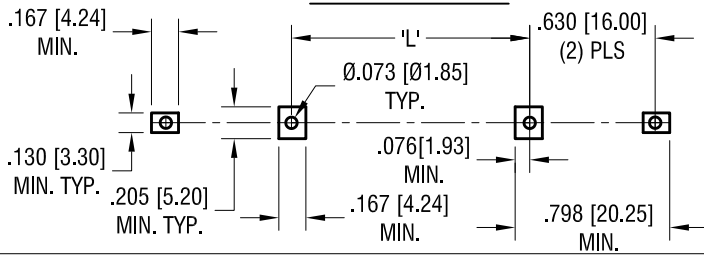
9.20.18 ROTATE POCKET ON 180°
CHANGE AS PER ECN 18-036

A
REV.

| | | | |
|--|--------|----------|--------------|
| KEYSTONE ELECTRONICS CORP. | | | |
| www.keyelco.com • NEW HYDE PARK, NY 11040 • Tel (516) 328-7500 | | | |
| PART NAME | | | |
| BATTERY HOLDER ON TAPE AND REEL | | | |
| MATERIAL | | | |
| AS NOTED | | | |
| FINISH | | DRN BY | DATE |
| AS NOTED | | NT | 3.01.18 |
| | | APP'D | SCALE |
| | | LN | X |
| TOLERANCES | INCH | [MM] | CODE |
| DECIMAL | ± .015 | [± 0.38] | DWG NO. |
| ANGULAR | ± 1° | | |
| UNLESS OTHERWISE SPECIFIED | | | C |
| | | | 254TR |

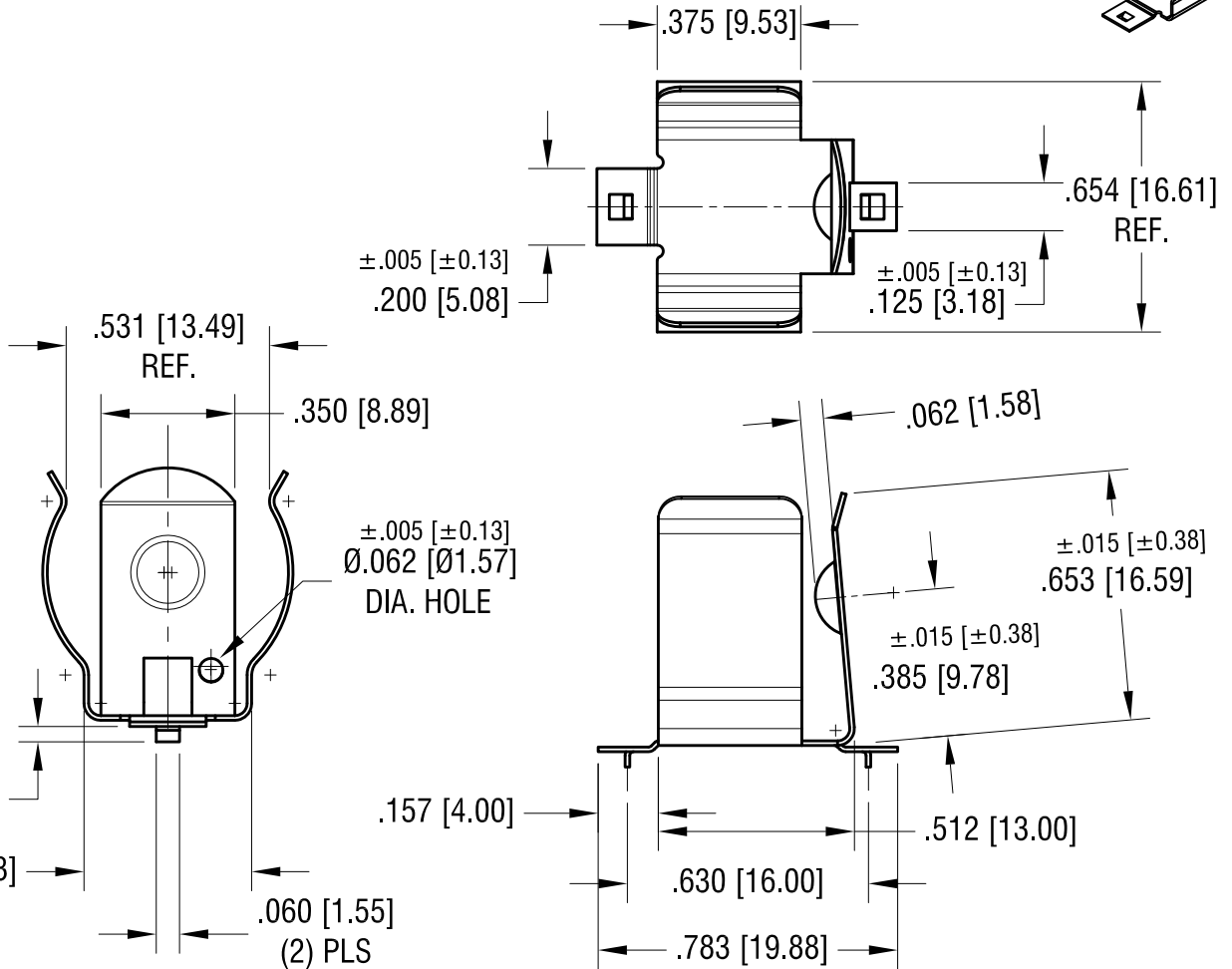
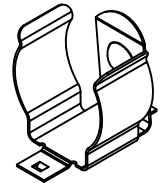
THIS DOCUMENT IS THE PROPERTY OF KEYSTONE ELECTRONICS CORP. AND SHALL NOT BE REPRODUCED, DISTRIBUTED OR USED AS A BASIS FOR MANUFACTURE WITHOUT PRIOR WRITTEN PERMISSION FROM KEYSTONE ELECTRONICS CORP.

MOUNTING LAYOUT



| BATTERY | 'L' |
|---------|---------------|
| CR123A | .270 [6.85] |
| 18350 | .324 [8.23] |
| 18650 | 1.584 [40.23] |

ACTUAL SIZE



NOTE:

1. HEAT TREAT TO SPRING TEMPER

PCB PROTECTION CIRCUITS ARE REQUIRED WHEN USED WITH LITHIUM-ION BATTERIES

KEYSTONE ELECTRONICS CORP.

www.keyelco.com • NEW HYDE PARK, NY 11040 • Tel (516) 328-7500

| | | | |
|--|--------|-----------------------------|------------|
| PART NAME | | 16mm - 19mm SM BATTERY CLIP | |
| MATERIAL | | | |
| .012 [0.30] TH'K ANNEALED SPRING STEEL | | | |
| FINISH | DRN BY | DATE | |
| TIN NICKEL PLATE | NT | 1.17.18 | |
| | APP'D | SCALE | |
| | LN | 2X | |
| TOLERANCES | INCH | [MM] | CODE |
| DECIMAL | ± .010 | [± 0.25] | C |
| ANGULAR | ± 2° | | |
| UNLESS OTHERWISE SPECIFIED | | | DWG NO. |
| | | | 254 |

| DATE | DESCRIPTION | REV. |
|------|-------------|------|
| | | |