

**Technical specification:**

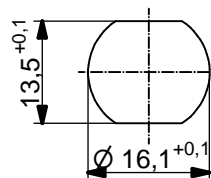
Rated voltage: IEC 61076-2-101	250 V
Current rating: IEC 61076-2-101	4 A at 40°C
Insulation resistance: IEC 60512	>=100 MΩ
Pollution degree: IEC 60664-1	3/2
Degree of protection: IEC 60529	IP 67, in mated condition
Temperature range:	-30°C ... +85°C
Mating cycles: IEC 60512-9a	>=100

**Materials:**

Contact:	CuZn
Contact plating:	Nickel, gold plated
Contact carrier:	PBT GF, UL 94
Sealing chassis:	NBR
Counternut:	CuZn, nickel plated
Socket housing:	CuZn, nickel plated
Grouting:	Polyurethane-resin, UL 94

**Installation specification:**

Recommended torque:	1-1,2 Nm
Conec installation tool:	Torque wrench: 36-000200 Insert across flats 19: 36-000250

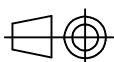


Minimum wall thickness 1,5mm,  
alternativ panel cut-out d=16,1

Part-no.:	Description:	Pos
43-02299	SAL - 12B - FSH4 - L	4

DO NOT ALTER CAD DRAWING BY HAND

Directive 2011/65/EU RoHS compliant



dim. in mm

	date	name
drawn	17.09.13	Fromm
appd.	17.09.13	Mankopf

general tolerance:	0 ± 0,50mm
	0,0 ± 0,25mm
	0,00 ± 0,10mm



THIS DRAWING MAY NOT BE COPIED OR REPRODUCED IN ANY WAY, AND MAY NOT BE PASSED ON TO A THIRD PARTY WITHOUT WRITTEN PERMISSION. OWNERSHIP AND COPYRIGHT OF CONEC GmbH

title:  
**Male socket M12x1 with soldering contact, backmounting, Profibus DP**

dwg no:  
**43K1A2126**

part no: **see table**