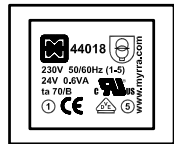
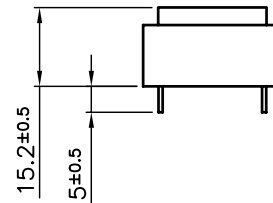
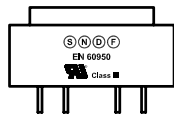


SAFETY ISOLATING TRANSFORMER

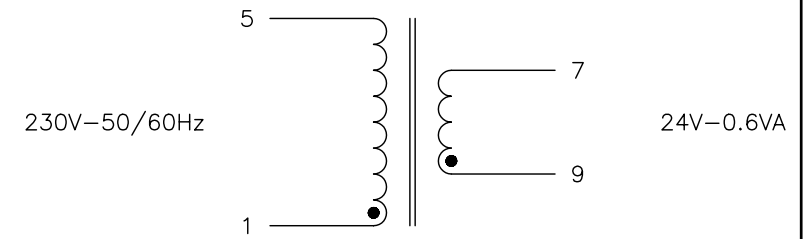
POWER : 0.6VA
 INPUT VOLTAGE : 230V
 FREQUENCY : 50/60Hz
 NOMINAL OUTPUT VOLTAGE : 24V

INHERENTLY SHORT CIRCUIT PROOF TRANSFORMER
 IPOO
 UL94V0
 OPERATING TEMPERATURE : -25°C to 70°C
 STORAGE TEMPERATURE : -25°C to 85°C
 INSULATION CLASS (IEC85) : B
 INHERENT PROTECTION

STANDARDS :
 UL506 (File E111078)
 CSA 22-2 (File E111078)
 UL1585 (File E240724)
 VDE (File Ref:1398300)
 EN60950 (File Ref:1398300)
 EN61558-1 (File Ref:1398300)
 EN61558-2-6 (File Ref:1398300)
 CE



<p>44018 230V 50/60Hz (1-5) 24V 0.6VA ta 70/B CE</p>	<p>EN 60950 Class III</p>	<p>N°07</p>
--	--	-------------



Finition:		Tolérance générale:	
Finition:		General tolerance:	
Ech: 1:1	Matière:		
	Material:		
Dessiné par: ROUSSEL.Ch	Date: 10/05/2004	Visa:	J.P.M.

D					
C					
B					
A					
Rev	Date	Modification	Dessiné	Visa	

DATA SHEET 44018
EI 30x5

	22 Allée du Clos des Charmes Z.A. Les Portes de la Forêt 77090 COLLEGIEN Tel : 01-60-37-55-55 Fax : 01-60-17-12-00	<p style="font-size: 2em;">DS44018</p>
--	--	---