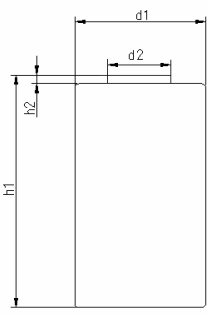


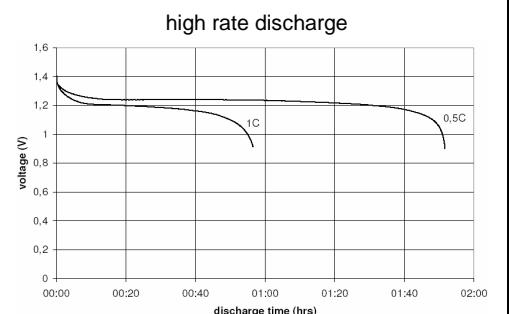
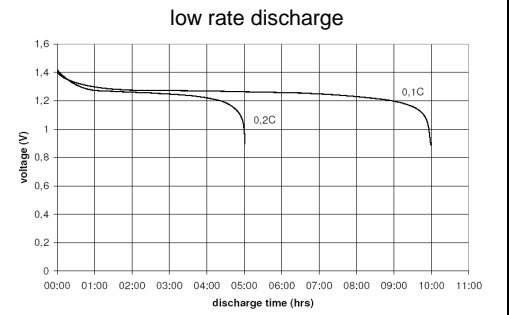
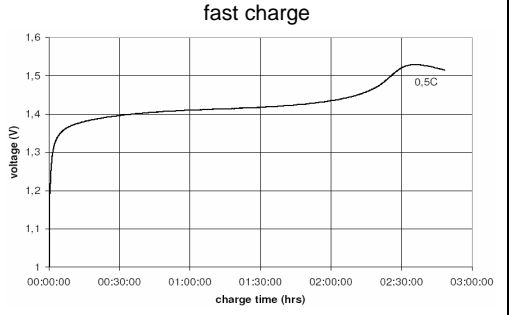
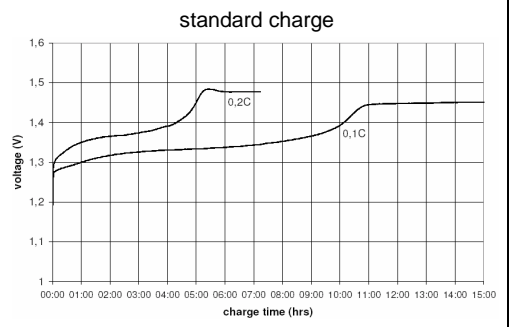
		Conditions	
cell type:		NiMH	
cell size:		Sub-C	
nominal voltage:	1.2	V	
max. charge voltage:	1.5	V	at standard charge (0.1C / 20°C)
capacity			
nominal:	3000	mAh	discharge at 0.2C
minimum:	2750	mAh	discharge at 0.2C
	2600	mAh	discharge at 1C
			1.0V end discharge voltage
			ta: 20°C
max. continuous discharge current:	15	A	ta: 0...45°C
max. peak current:	30	A	
charge			
standard charge:	300	mA	14...16hrs
quick charge:	850	mA	4hrs
fast charge:	3000	mA	1.1hrs
recommended charge termination control parameters:	5...10	mV	- delta V
	0.8...1	°C	temperature rise per minute
	45...50	°C	TCO (temperature cut off)
trickle charge current:	30...150	mA	(recommended)
continuous overcharge: (less than 1 year)	≤ 300	mA	no conspicuous deformation no leakage
internal resistance: (impedance)	≤ 6	mΩ	at 1KHz battery fully charged
life expectancy:	≥ 500	cycles	acc. IEC standard
self discharge			
charge retention: (at ≤ 20°C ambient)	≥ 80	%	after 6 months storage
	≥ 75	%	after 12 months storage
initial capacity:	≥ 2100	mAh	within 30 days after delivery discharge at 0.2C
ambient temperature range:	0...45	°C	standard charge
	10...40	°C	fast charge
	- 20...65	°C	discharge (≤1.0C)
	0...45	°C	discharge (>1.0C)
	- 20...50	°C	storage (≤3months)
	- 20...40	°C	storage (≤6months)
	- 20...30	°C	storage (≤24months)

QCT1: 20/2700/6
QCT2: 30/2550/8

mechanical specifications	
cell dimensions (incl. label)	
diameter d1:	22.5 - 1.0 mm
diameter d2:	10.0 ± 1.0 mm
height h1:	43.0 - 1.0 mm
height h2:	min. 0.3 mm
weight:	59 ± 5 g



Diagrams



	ANSMANN Specifications for model:	SubC - 3000mAh low self discharge with tags (Z-form) bulk package
	data sheet no. / part no.	5035391
	version no.	0
	author / date	Gramlich / 13.03.2009

Manufacturer reserves the right to alter or amend the design, model and specification without prior notice