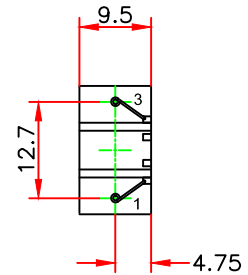
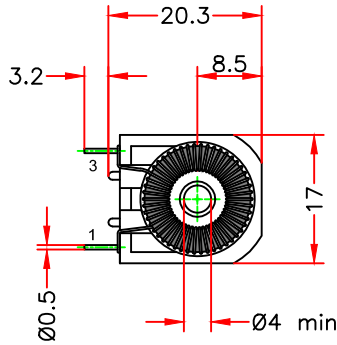
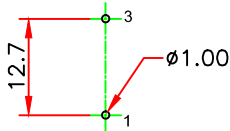
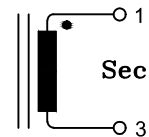


Viewed on component side



Schematics



TECHNICAL DATA :

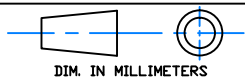
- Core : toroid $\varnothing 14 / \varnothing 9 / H5 \mu i$ 6000 ferrite material or equivalent
- Wire : $\varnothing 0.18$ grade 2 class F or equivalent
- Windings : 100 turns
- Typical inductance : 20mH at 10KHz , 0.1mA
- DC resistance : 1.4 Ω max
- Current primary peak (1turn) : 20A
- Test voltage between primary / secondary : 2500 VAC – 50Hz
- Climatic category : DIN GKC (-40° to +125°C; humidity cat. C)
- Material case : PBT at 30% fibreglass UL94-V0 or equivalent

RoHS compliance

Please, refer to general catalog for unspecified parameters

a	
IND	DATE

Radiohm Specification



Designation : 69V21 0100

Part number : _____

Date : 06/05/2024

Preliminary :

Final :

Checked by: Sami NCIRI

Customer Specification Approval

Part number : _____

Signature : _____

Name : _____

Title : _____

Date : _____