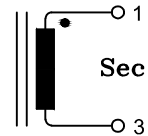


TECHNICAL DATA :

Core : toroid $\varnothing 14 / \varnothing 9 / H5 \mu i$ 6000 ferrite material or equivalent
 Wire : $\varnothing 0.18$ grade 2 class F or equivalent
 Windings : 500 turns
 Typical inductance : 560mH at 10KHz , 0.1mA
 DC resistance : 25 Ω max
 Current primary peak (1turn) : 20A
 Test voltage between primary / secondary : 2500 VAC – 50Hz
 Climatic category : DIN GKC (-40° to +125°C; humidity cat. C)
 Material case : PBT at 30% fibreglass UL94-V0 or equivalent

Schematics

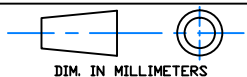


RoHS compliance

Please, refer to general catalog for unspecified parameters

a	
IND	DATE

Radiohm Specification



Designation : 69V21 0500

Part number : _____

Date : 06/05/2024

Preliminary :

Final :

Checked by: Sami NCIRI

Customer Specification Approval

Part number : _____

Signature : _____

Name : _____

Title : _____

Date : _____