

cell type: Ni-Zn (Nickel-Zinc)
cell size: AAA; ZR3

nominal voltage: 1.65 V

Conditions

Diagrams

capacity
 nominal: 550 mAh
 minimum: 505 mAh
 475 mAh

ta: 20°C; E.V.(Discharge End Voltage)
 discharge at 0.2C to E.V. 1.3V
 discharge at 0.2C to E.V. 1.3V
 discharge at 1C to E.V. 1.2V

discharge
 max. continuous discharge current: 1.65 A (3C)
 discharge end voltage: 1.1 V

ta: 0....50°C

charge
 charge method: CC - CV
 (Constant Current - Constant Voltage)

recommended charge current
 at standard charge: 110 mA (0.2C)
 at fast charge: 550 mA (1C)

max. charge current: 550 mA (1C)

charge voltage (standard): 1.9 V ± 20mV
 temperature compensated: 1.9 V $-(0.003 \times (T-25^\circ\text{C}))\text{V}$

charging cut off by time: 8 h at standard charge
 2.5 h at fast charge

by current: 18 mA

internal resistance: ≤ 40 mΩ at 1KHz; sine wave
 (impedance) battery fully charged

life expectancy
 at 0.2C charge / 0.5C discharge: ≥ 300 cycles (>70% of min. capacity)

self discharge
 charge retention: ≥ 70 % after 28 days storage at 20°C

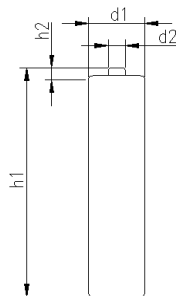
ambient temperature range:
 0...45 °C charge
 - 20...65 °C discharge
 - 20...30 °C storage max. 1year
 - 20...40 °C storage max. 3months
 - 20...50 °C storage max. 30days

QCT1: 20/480/50
 QCT2: 30/450/55

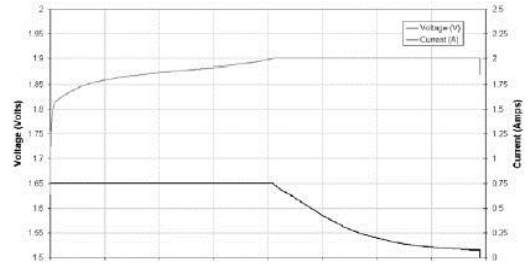
mechanical specifications

cell dimensions
 diameter d1: 10.5 - 0.7 mm
 diameter d2: max. 3.8 mm
 height h1: 44.5 - 1.5 mm
 height h2: min. 0.8 mm
 weight: 11 ± 2 g

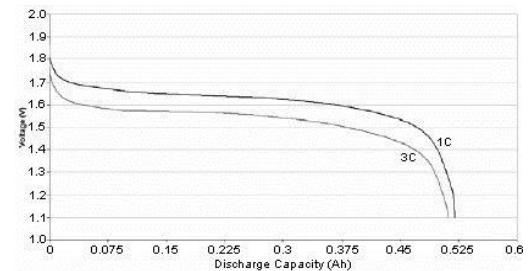
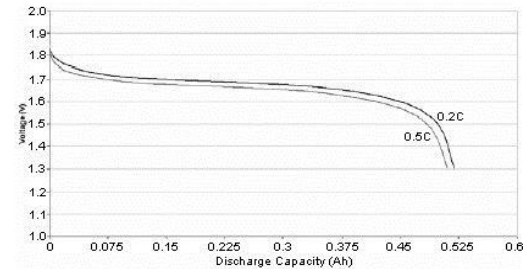
shrink package dimensions: 42 x 45 x 11 mm
 shrink package weight: 45 g



Charge Characteristics at 25°C



Voltage vs. Capacity at 25°C



	ANSMANN Specifications for model:	AAA - 900mWh NiZn battery 4pcs shrink package
	data sheet no. / part no.	1321-0001
	supplier no.	701372
	author / date	TG / 11.03.2016