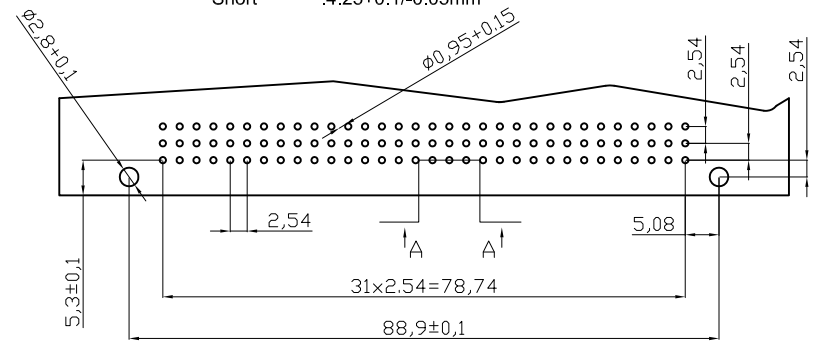
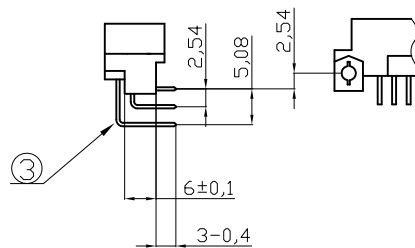
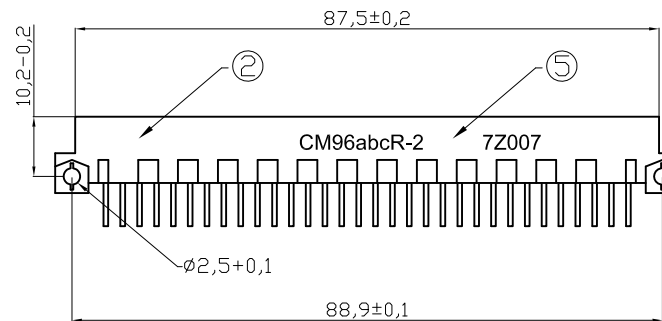


Recommended Hole Specifications  
Section A-A  
Scale 6:1

**NOTES:**

- ① Connector Meets Requirement OF DIN 41612
- ② Material:
  - 1.Housing : Glass-Filled PBT. Color: Grey, UL 94V-0
  - 2.Contact : Copper Alloy
- ③ Contact Tail Dimension
  - Thickness :0.48±0.03mm
  - Width :0.48±0.03mm
  - Tail Length :3- 0.4mm
- ④ Contact Finish(Option in Part Number "-x" )
  - 1: 25µ" (0.63µm)Pd/Ni and 2µ" Gold Plating on Mating Area , 100µ"(2.54µm)Tin Plating on Tail Area, Flash Gold Plating on Non-mating Area, 50µ"(1.27µm)Nickel Underplate All Over
  - 2:12µ" (0.30µm)Pd/Ni and 2µ" Gold Plating on Mating Area , 100µ"(2.54µm)Tin Plating on Tail Area, Flash Gold Plating on Non-mating Area, 50µ"(1.27µm)Nickel Underplate All Over
  - Blank: Flash Gold Plating on Non-mating Area, 100µ"(2.54µm)Tin Plating on Tail Area, 50µ"(1.27µm)Nickel Underplate All Over
- ⑤ Connector Printed with Part Number,and Batch Number
- ⑥ Mating Side Length
  - Standard :5.05-0.25mm
  - Extended :5.60±0.2/-0.05mm
  - Short :4.25±0.1/-0.05mm



Recommended PCB Hole Layout  
Component Side  
Scale 1:1

**RoHS compliant**  
Unit: mm

Scale	Free						Date	Name	Customer-No.
TOLERANCE							Drawn	27.02.2002	Hellwig
X.	±0.25								
X.X	±0.10	④	Modification of Male Pin – see PCN20131612_DIN41612-Arev01	20.12.2013	Amy	Approved	20.12.2013	Amy	ASSMANN WSW-No. A-CM64ACR-x A-CM96ABCR-x
X.XX	±0.05	③	Change plating	23.02.2011	Rale				
X.XXX	±0.012	②	Update	16.07.2009	Dean				Drawing-No.
DIM	TOL	①	Drawn	27.02.2002	Hellwig	<b>ASSMANN</b> WSW components		<b>ASS 1255 CO</b>	
Angle	±1°							Replace	rev04
		Id.	Modification	Date	Name				Sheet



**ASS 1255 CO** rev04

Replace Sheet