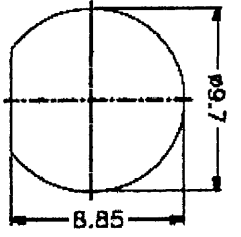
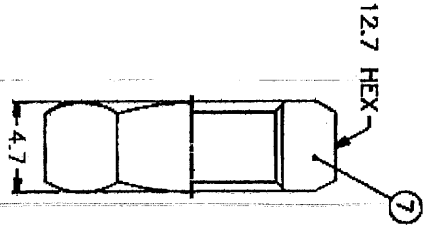
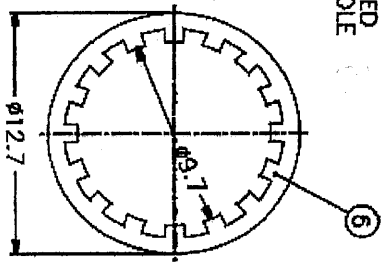
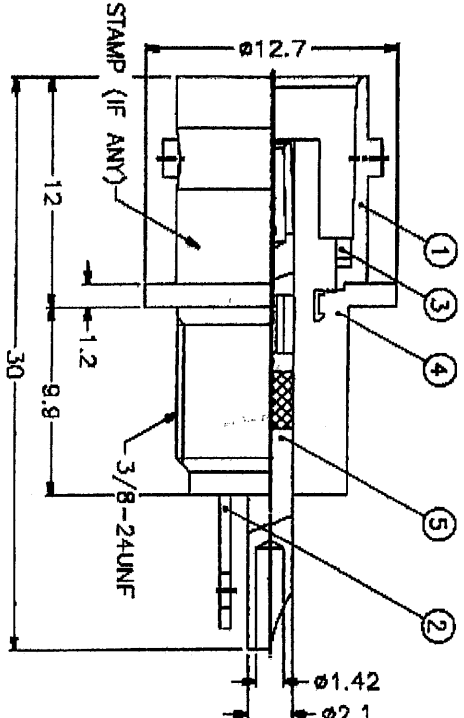


ISS	ZONE	DESCRIPTION (PER REQUEST)	DATE

1 2 3 4 5 6 7 8



RECOMMENDED MOUNTING HOLE



1. MAX. PANEL THICKNESS=3.2mm

RECOMMENDED TORQUE: A MAXIMUM TORQUE OF 12 INCH-LEBS MAY BE APPLIED ON HEX NUT WHEN MOUNTING CONNECTOR IN PANEL.

- NOTES: FINISH (PLATING THICKNESS IN MICRO-INCHES)
- BRASS PER QQ-B-628
 - BRASS PER QQ-B-613
 - NICKEL PL. 100 MIN. THICK OVER COPPER STRIKE
 - PHOSPHOR BRONZE PER QQ-B-750
 - GOLD PL. 3 MIN. THICK OVER NICKEL PL. 100 MIN. THICK OVER COPPER STRIKE
 - BRIGHT TIN PL. 200 MIN. THICK OVER NICKEL PL. 50 MIN. THICK OVER COPPER PL. 100 MIN. THICK

NO.	DESCRIPTION	MATERIAL	FINISH	QTY	DRAWING NO.	SCALE	S/1	ISSUE	A	FILE NO.
1	BODY	NOTE 1	NOTE 3	1						
2	BRAUD	NOTE 2	NOTE 6	1						
3	LOCK RING	NOTE 2	NOTE 3	1						
4	INSULATOR	NYLON	WHITE	1						
5	CONTACT PIN	NOTE 4	NOTE 5	1						
6	LOCK WASHER	NOTE 2	NOTE 3	1						
7	HEX NUT	NOTE 1	NOTE 3	1						

DIMENSIONS ARE IN MILLIMETERS UNLESS OTHERWISE SPECIFIED		TOLERANCES	
0.5-6	= ±0.2	APPROVED	DATE
6-30	= ±0.4		10-11-01*
30-120	= ±0.6	CHECKED	DATE
120-315	= ±1		10-11-01*
315-1000	= ±1.6	DRAWN	DATE
1000-2000	= ±2.4		10-11-01*

DIMENSIONS ARE IN MILLIMETERS UNLESS OTHERWISE SPECIFIED		TOLERANCES	
0.5-6	= ±0.2	APPROVED	DATE
6-30	= ±0.4		10-11-01*
30-120	= ±0.6	CHECKED	DATE
120-315	= ±1		10-11-01*
315-1000	= ±1.6	DRAWN	DATE
1000-2000	= ±2.4		10-11-01*

1 2 3 4 5 6 7 8