

# FEMALE HEADERS

## Female header

### Technical data:

Insulating material: Thermoplast UL 94V-0  
 Contact material: Copper alloy  
 Rated current: 7 Amp.  
 Rated voltage:  $250 V_{RMS}/V_{DC}$   
 Breakdown voltage:  $1500 V_{RMS}/V_{DC}$  for one minute  
 Operating temperature:  $-25^{\circ}C$  to  $+85^{\circ}C$

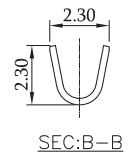
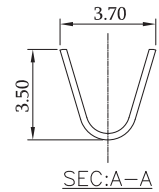
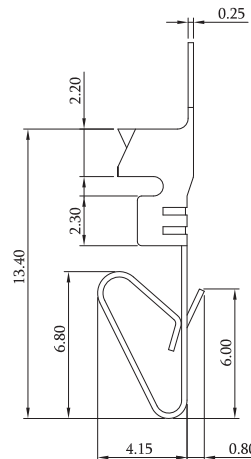
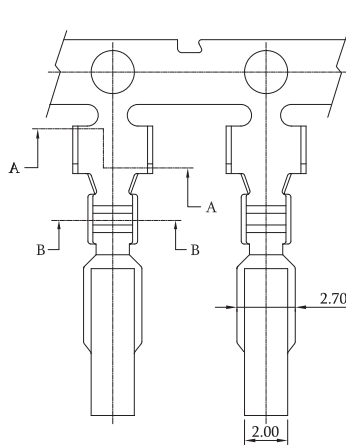
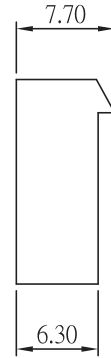
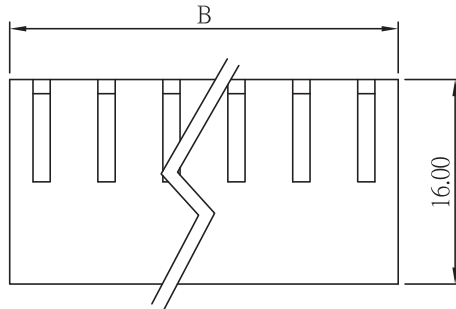
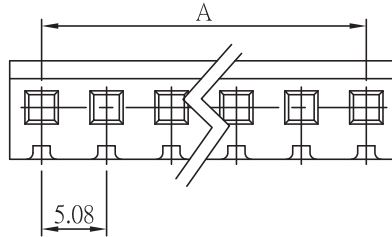
RoHS-compliant

pitch	rows	row distance	orientation	termination
5,08	1		right angled	SMD

BLC58-1600G-XXXL

XXX = pincount  
(see table)

Pincount	Dimensions	
	A	B
002	5.08	10.08
003	10.16	15.16
004	15.24	20.24
005	20.32	25.32
006	25.40	30.40
007	30.48	35.48
008	35.56	40.56
009	40.64	45.64
010	45.72	50.72
011	50.80	55.80
012	55.88	60.88
013	60.96	65.96
014	66.04	71.04
015	71.12	76.12
016	76.20	81.20
017	81.28	86.28
018	86.36	91.36
019	91.44	96.44
020	96.52	101.52



Crimpcontact  
 CC396-18/24-TT-RL  
 Plating: Tin  
 Packsize: 6.000 per Reel

Pincount: see table

Specification code: **BLC58-1600G-XXXL**