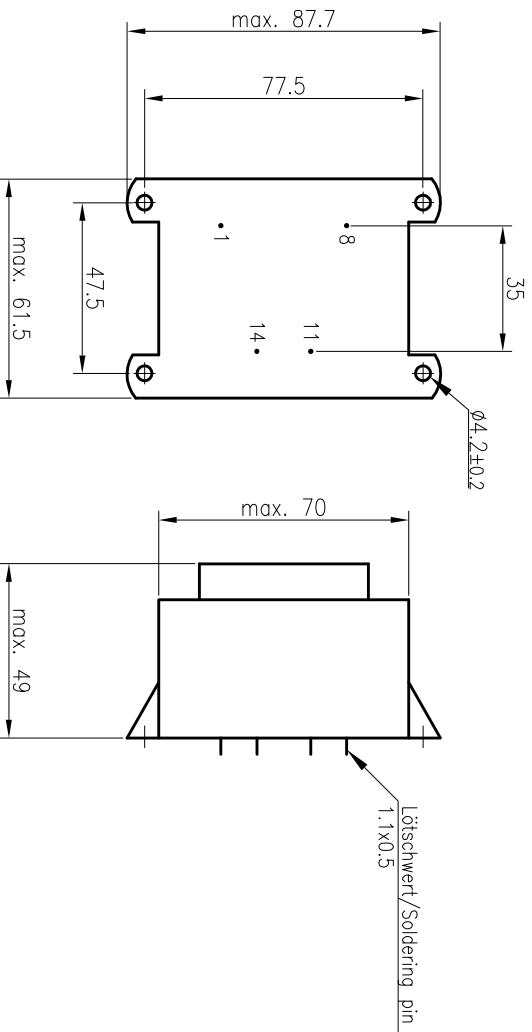
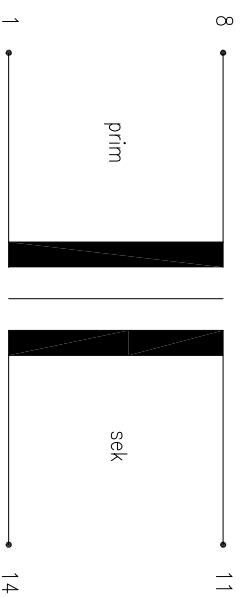


Schemazeichnung mit Hauptabmessungen/Drawing with principal dimensions



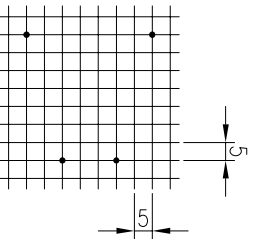
Anschlusschema/Scheme:



Elektrische Daten/Electrical Data:

prim.: 230V 50-60Hz 1-8
sek.: 12V 33VA 11-14
 Temp.-Klasse/class: ta 70°C/B
 nicht kurzschlussfest/non short-circuit-proof






Raster/Grid:
 Ansicht:Stiftseite/View:pin side




Kennzeichnung/Identification:
 Tampondruck/Pad printing

prim 230V 50-60Hz 1-8
 BV EI 662 1092
 to 70°C/B

sek 12V 33.0VA 11-14

HAHN     

Extern:  sek 2,5AT
 ①

②

Unsere Bauteile werden mit einem Date Code (KW: KW/JJ) versehen/Our components are provided with a Date Code (KW: cw/yy)

01	07.08.2013	max. Maße hinzu		SOS
HAHN GmbH & Co. KG				
Transformator		BV EI 662 1092		
Maße ohne Toleranzangabe ±0,3/Dimensions without tolerances ±0,3mm Unterliegt nicht dem Änderungsdienst/is not liable to the changing service				
Erstellt:	27.08.2007	Beuermann	Kunde	
Geprüft:	27.08.2007	Gebhardt	Ort:	
Maßstab:	1:2		Z.Nr.:	4638
Typ:	EI 66/23	-kk-	Projekt-/Ar.-Nr.:	
F:\QAM\CAD\TRAF0-EI\VERG\EI-66\662\BV-EI-662-1092-Serie				