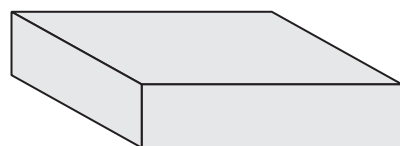
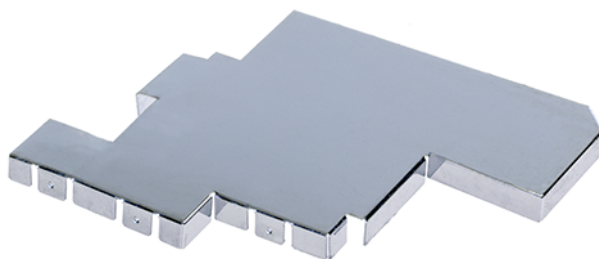


# DATASHEET



## Technical data:

Available sizes: from 10 x 10 x 1 up to 100 x 160 x 20  
in steps of 1 mm

Board termination: Through hole or SMD solder  
Plug in with special mounting clips

Our EMI shielding covers have been developed to shield only a part of electronic equipment from electromagnetic radiation or eliminate them as a source. We offer them in a wide range of sizes and variations. Our very flexible manufacturing processes together with our most modern CNC production allows to supply any size within a very short delivery time.

These one-piece EMI shielding covers are a perfect solution for small to medium quantities. They can be soldered direct to the PCB in either through hole or surface mount technology or they can be connected using our special mounting clips. Besides our standard sizes we are offering customer specific products as well.

For prototyping we are offering prototype kits.

## Mounting clips



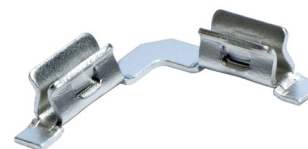
Through hole solder



Small SMD



Large SMD



Corner SMD

## Dimensions

Length (inside)	Width (inside)	Height (inside)	Coplanarity
15 mm	10 mm	3, 5, 10 mm	0,1
15 mm	15 mm	3, 5, 10 mm	0,1
20 mm	15 mm	3, 5, 10 mm	0,1
20 mm	20 mm	3, 5, 10 mm	0,1
25 mm	25 mm	3, 5, 10 mm	0,1
30 mm	20 mm	3, 5, 10 mm	0,1
30 mm	30 mm	3, 5, 10 mm	0,1
35 mm	35 mm	3, 5, 10 mm	0,1
40 mm	30 mm	3, 5, 10 mm	0,1
40 mm	40 mm	3, 5, 10 mm	0,2
42 mm	22 mm	3, 5, 10 mm	0,2
45 mm	45 mm	3, 5, 10 mm	0,2
50 mm	50 mm	3, 5, 10 mm	0,2
52 mm	21 mm	3, 5, 10 mm	0,2
60 mm	40 mm	3, 5, 10 mm	0,2
60 mm	60 mm	3, 5, 10 mm	0,3

Thickness: 30 = 0,30 mm / 50 = 0,50 mm  
Material: C = Copper blank / S = Tin plate  
Length (inside): see table  
Width (inside): see table  
Height (inside): see table

Order code: **857-1-XX-X-XXX-XXX-XX-S**