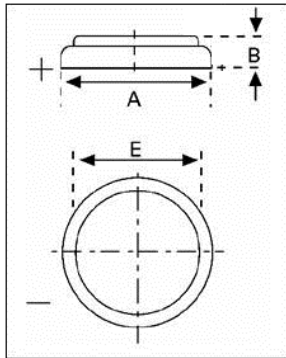


**Data Sheet**


**Type Number** ..... 6032  
**Designation IEC** ..... CR 2032  
**System** ..... Li-Manganese dioxide / Organic Electrolyte

**UL Recognition:**..... MH 13654  
**Nominal Voltage** ..... 3 V  
**Typical Capacity C** ..... 220 mAh  
 Load 5.6 kOhm, at 20°C down to 2 V

**Weight (approx.)** ..... 3 g  
**Volume** ..... 0,95 ccm  
**Coding**..... Date of Manufacturing DWWY

**Temperature Ranges**

	min	max.
Storage .....	-55°C	70°C
Discharge .....	-20°C	70°C *

**Dimensions**

	min	max.
Diameter (A) .....	19,7	20,0
Height (B) .....	2,9	3,2
Shoulder Diameter (E) .....	16,0	

**Segment** ..... Electronic

**Main Applications** ..... Watch  
 Photo  
 Electronic

**Typical Capacities (at 20°C)**

Discharge Type	Load	End Voltage:	2.0 V
Continuous 24h/d,7d/w	5600 Ω	Time: Capacity [mAh]: Energy [mWh]:	430 h 220 610

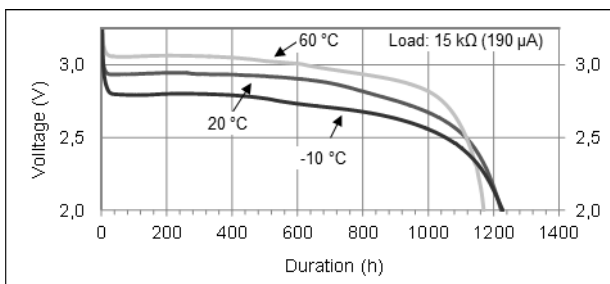
\* Contact VARTA if the application is intend to be outside the range of -20°C to 70°C

*Information and contents in this data sheet are for reference purpose only.  
 They do not constitute any warranty or representation and are subject to change without notice.  
 For most current information and further details, please contact your VARTA representative.*

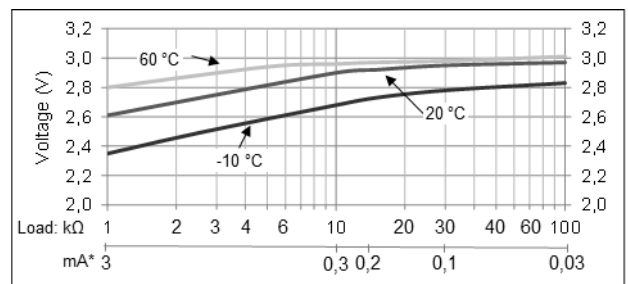
**Data Sheet**

**Performance Data:**

• **Temperature Characteristics**

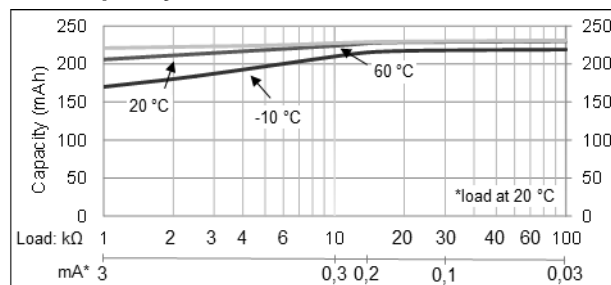


• **Operating Voltage vs. load resistance \***



\* Voltage at 50% discharge depth

• **Capacity vs. load resistance**



- Self-discharge rate < 1% at room temperature
- Storage life > 10 years
- Operating life\* > 10 years

\* depending on environmental condition and energy consumption

*Information and contents in this data sheet are for reference purpose only.  
They do not constitute any warranty or representation and are subject to change without notice.  
For most current information and further details, please contact your VARTA representative.*