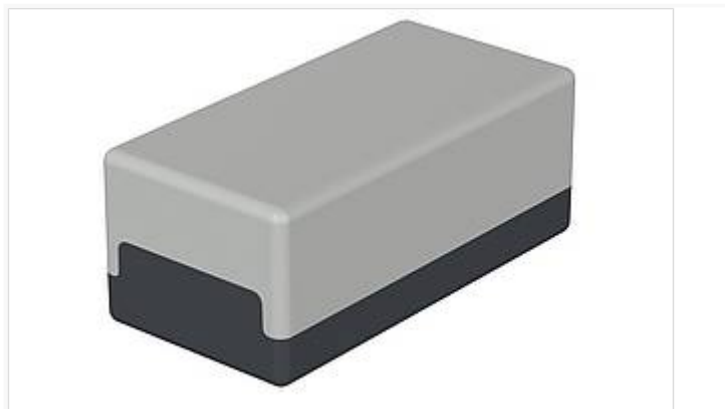


Element / Universal

Enclosure, plain



E 420

Order no.: 05420002

* = Available on request.

Characteristics

Colour of enclosure group

light grey/graphite grey

Protection class

IP 40

Enclosure Material

PS (polystyrene); for details see Technical Information

Scope of delivery

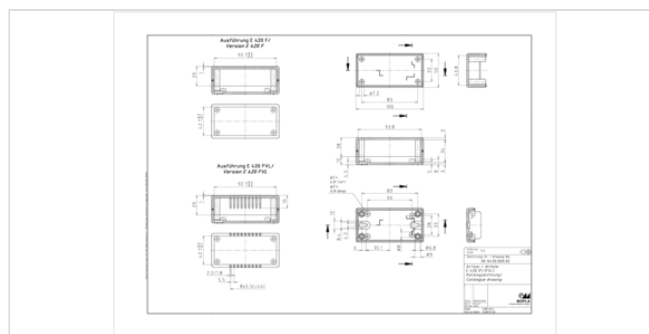
Lid, base, 4 fixing screws

Dimensions

Dimensions

100 x 50 x 40 mm

Product drawing



Important!

To compensate for pressure when temperatures change and cause moisture in the enclosure, we recommend that you use a pressure compensation element.

» Additional information

Technical documentation / Downloads

Technical drawings

3D product data in STEP format: Registration necessary

Product drawing in PDF format: 05420002 E-420.pdf (69.4 KB)

Product drawing in DXF format: 05420002 E-420.dxf (787.8 KB)

Product information

Element Universal GB.pdf (344.8 KB)

Matching accessories



Wall brackets, nickel-plated sheet steel

25001500 E-WL For E 406-E 450



Mounting panel, laminated paper

25000100* E-M For E 410-E 420



Rubber feet, self-adhesive

22009000 GF Polyurethane, 65-75 Shore Black



Universal DIN rail holder TSH 35, polyamide

22035000 TSH 35 Black, similar to RAL 9005



Metal top hat rail adapter for DIN rail DIN EN 60715 TH 35

34035050 TSH 35 AL - 50 Width 50 mm, natural colour anodised
34035100 TSH 35 AL - 100 Width 100 mm, natural colour anodised



Screws (SHR) and distance bolts (DIBLZ) for mounting bosses in plastic enclosures

59006219 SHR Z KA30x6 SD = 3.0 / ND = 2.4-2.6 / KD = 5.3