

THIS DRAWING IS UNPUBLISHED.

RELEASED FOR PUBLICATION

© COPYRIGHT 19

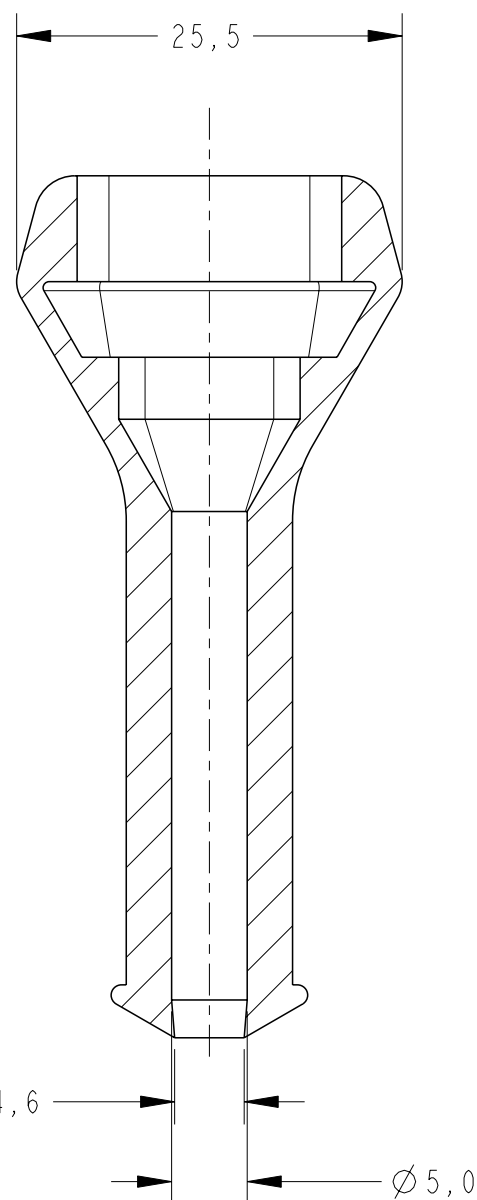
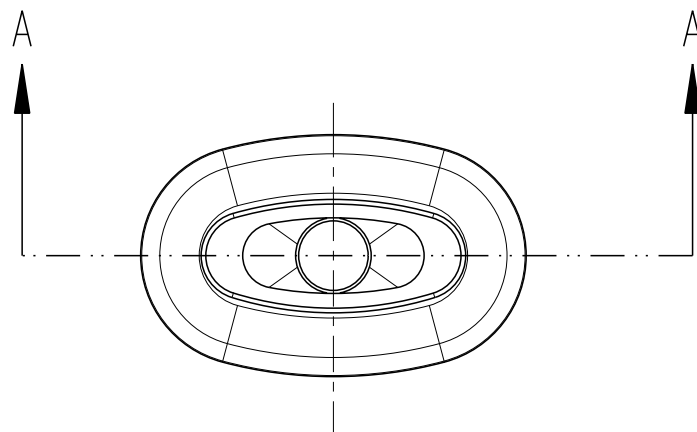
ALL RIGHTS RESERVED.

LOC
AP

DIST
-

REVISIONS

P	LTR	DESCRIPTION	DATE	DWN	APVD
	C	REVISED BY ECO-07-018018	04SEP2007	RKTL	LWP
	D	CHANGED STATUS ECO-11-009754	22JUN2011	MAS	MG



SECTION A-A

- ⓑ $\triangle 1$ - ELASTÔMERO SAE J200, 2BC 414, A14, B14, C12, E014, F17, Z1
Z1=RESISTÊNCIA RASGO, ASTM D624 - 20kg/cm MIN.
- ⓑ $\triangle 2$ - ELASTÔMERO SAE J200, 2BC 514, A14, B14, C12, E014, F17, Z1
Z1=RESISTÊNCIA RASGO, ASTM D624 - 20kg/cm MIN.
- ⓒ $\triangle 3$ - ELASTOMERO SAE J 200M, 2GE, 405, A19, B37, EA14, E016, E036, F19, G11, Z1 Z1 = EXTERNAMENTE LUBRIFICADO 2%

- $\triangle 1$ - ELASTOMER SAE J200, 2BC 414, A14, B14, C12, E014, F17, Z1
Z1= TEAR RESISTANCE, ASTM D624 -20kg/cm MIN.
- $\triangle 2$ - ELASTOMER SAE J200, 2BC 514, A14, B14, C12, E014, F17, Z1
Z1= TEAR RESISTANCE, ASTM D624 -20kg/cm MIN.
- $\triangle 3$ - ELASTOMER SAE J 200M, 2GE, 405, A19, B37, EA14, E016, E036, F19, G11, Z1 Z1 = 2% LUBRIFICATED EXTERNALY

ⓐ	PRETO/BLACK	40±5 SHORE A	SILICON $\triangle 3$	880811-3
	PRETO/BLACK	40±5 SHORE A	ELASTOMER $\triangle 1$	880811-2
ⓑ	PRETO/BLACK	50±5 SHORE A	ELASTOMER $\triangle 2$	880811-1
	FINISH	HARDNESS	MATERIAL	PART NUMBER



THIS DRAWING IS A CONTROLLED DOCUMENT.		DWN M.L. OGAWA 10JUN99	TE Connectivity COVER CAP 3 POSN				
DIMENSIONS: mm		CHK P.L.FARIA 10JUN99				NAME	
TOLERANCES UNLESS OTHERWISE SPECIFIED: 0 PLC ±- 1 PLC ±0,3 2 PLC ±- 3 PLC ±- 4 PLC ±- ANGLES ±1° FINISH		APVD J.M.M. NETO 10JUN99				PRODUCT SPEC	
MATERIAL SEE TABLE						APPLICATION SPEC	
		WEIGHT	SIZE	CAGE CODE	DRAWING NO	RESTRICTED TO	
			A3	00779	880811		
CUSTOMER DRAWING			SCALE	SHEET	OF	REV	
			2:1	1	1	D	