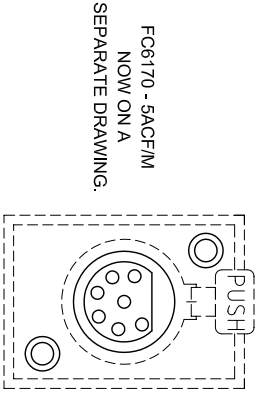
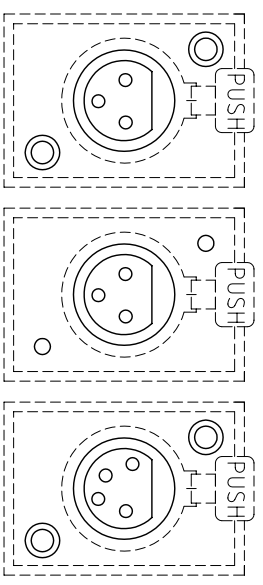
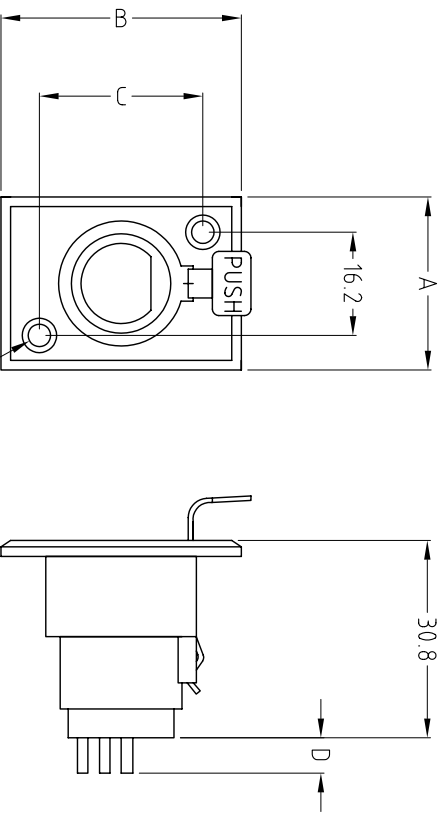


ISS.	AMEND	DATE
1	1st DRAWN	27/01/03
2	FC6170 SACF/M REMOVED	09/10/09
3	FC6100N ADDED	24/09/10



- 3ACF/M FC6100
- 3ACF/M FC6100N
- 4ACF/M FC6120
- 7ACF/M FC6187

TEMPERATURE RANGE -30° TO +89°C  
 LIFETIME >5000 INSERTIONS

REFERENCE DIMENSIONS. SEE DATA SHEET CLIFF 02/02. (DIMS MAY VARY)  
 NOTE: SACF/M IS NOT PER DATA SHEET SEE SEPARATE DRAWING FC6170

SPECIFICATION											
MODEL	I(A) MAX @25°C	MAX CABLE	C (Pf)	Cr mΩ (MATED)	IR Ω @ 500 V	DIELECTRIC STRENGTH	DIM A	DIM B	DIM C	DIM D	FIXING HOLES
FC6100	16	2.5	<4	<5	>10 <sup>6</sup>	1500	27.2	37.3	25.5	5.5	Ø3.50 C/SK
FC6100N	16	2.5	<4	<5	>10 <sup>6</sup>	1500	27.2	37.3	25.5	5.5	Ø2.50
FC6120	10	1.0	<7	<5	>10 <sup>6</sup>	1500	26.2	35.7	26.0	5.5	Ø3.50 C/SK
FC6170	SEE SEPARATE DRAWING										
FC6187	5 (125V)	1	<9	<5	>10 <sup>6</sup>	1000	27.7	37.5	26.0	6.3	Ø3.50 C/SK

**ROHS COMPLIANT**

TOLERANCE  
 NO DEC. PLACE ±0.50  
 1 DEC. PLACE ±0.20  
 2 DEC. PLACE ±0.10  
 HOLE Ø ±0.10  
 ANGLES ±1/2°  
 UNLESS OTHERWISE STATED

**Cliff Electronic Components Ltd.**  
 76 Holmehope Avenue, Holmehope Industrial Estate,  
 Redhill, Surrey, RH1 2PF, England, UK  
 Tel: 01737-771375 Fax: 01737-766012 Website: www.cliffuk.co.uk

DIMENSIONS IN MILLIMETERS UNLESS OTHERWISE STATED. WORK TO DIMENSIONS. REMOVE ALL BURRS. IF IN DOUBT ASK. 3rd ANGLE PROJECTION:

THE CONTENTS OF THIS DOCUMENT MUST NOT BE COPIED OR DISCLOSED TO A 3rd PARTY WITHOUT WRITTEN PERMISSION OF CLIFF UK. © 2010

MATERIAL: COMPOSITE  
 FINISH: CLEAN  
 DRAWN: MST  
 APPROVED: RWT  
 TITLE: XLR SOCKET (FEMALE) X AC/FM  
 DRWG. No. **FC 6100**  
 FORM. ADDR/WH

DO NOT SCALE