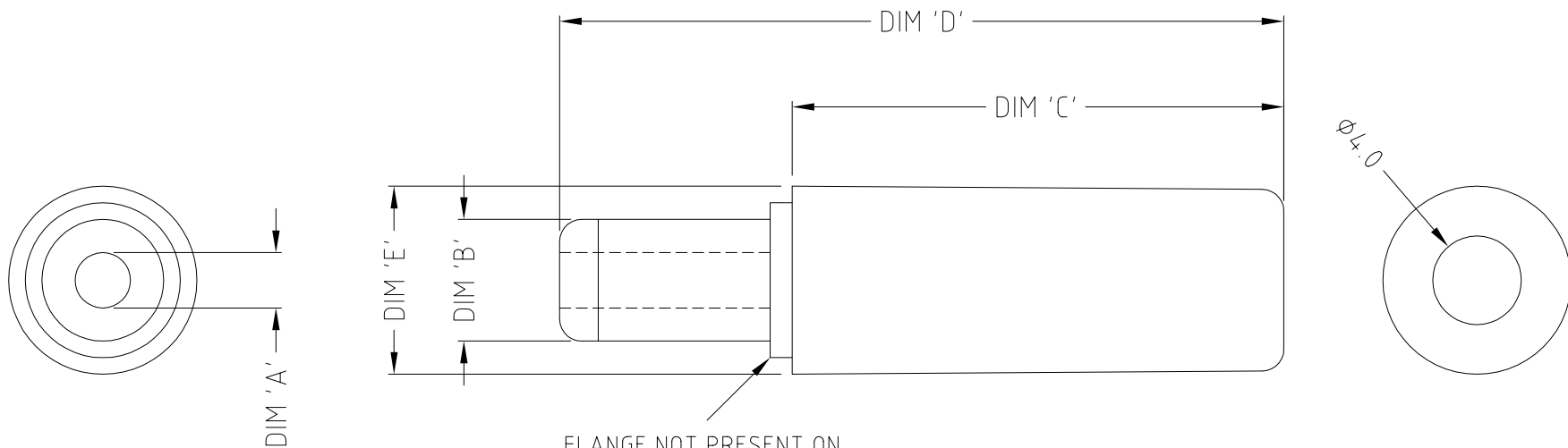
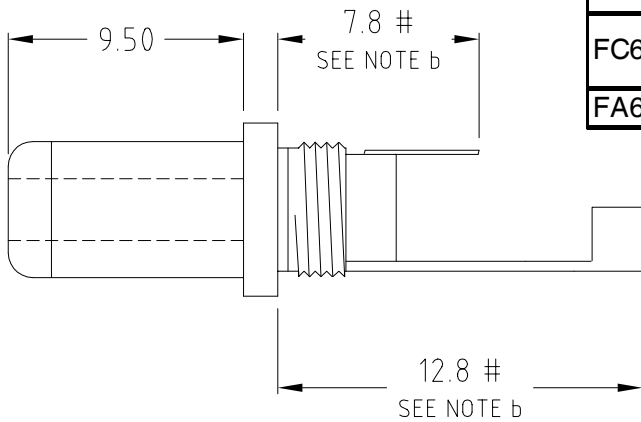
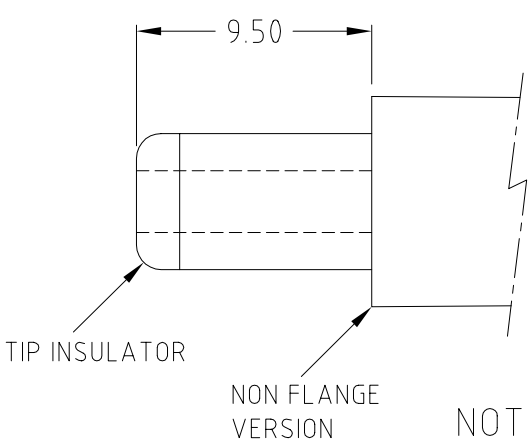


ISS.	AMEND	DATE
1	1st DRAWN	27/07/90
2	NOTE *	02/05/91
3	C MODELS ADD	01/02/94
4	F ADD, C MOD DEL	25/04/96
5	DIM D AMEND	06/02/07
6	DCPP3 B DIM ERROR	19/02/07
7	UPDATE TABLE+VIEWS	04/09/13



FLANGE NOT PRESENT ON ALL MODELS. SEE TABLE

PART No.	MODEL	DIM A	DIM B	DIM C	DIM D	DIM E	FLANGE
FC68147	DCPP1	$\phi 2.1$	$\phi 5.5$	22.2	32.7	$\phi 8.7$	YES
				20.0	29.5	$\phi 8.3$	NO
FC681471	DCPP2	$\phi 2.5$	$\phi 5.5$	22.2	32.7	$\phi 8.7$	YES
				20.0	29.5	$\phi 8.3$	NO
FA67555	DCPP3	$\phi 1.3$	$\phi 3.5$	21.8	32.3	$\phi 7.8$	YES



- NOTES:
- a) NOMINAL RATING FOR ALL: 12V 5A (60VA)
 - b) # DIMENSIONS MAY VARY.
 - c) DCPP1 + DCPP2 WITH OR WITHOUT FLANGE, SEE TABLE.

RoHS
COMPLIANT

TOLERANCE
 NO DEC. PLACE ± 0.50
 1 DEC. PLACE ± 0.25
 2 DEC. PLACE ± 0.10
 HOLE $\phi \pm 0.10$
 ANGLES $\pm 1/2^\circ$
 UNLESS OTHERWISE STATED

THE CONTENTS OF THIS DOCUMENT MUST NOT BE COPIED OR DISCLOSED TO A 3rd PARTY WITHOUT WRITTEN PERMISSION OF CLIFF UK. © 1990