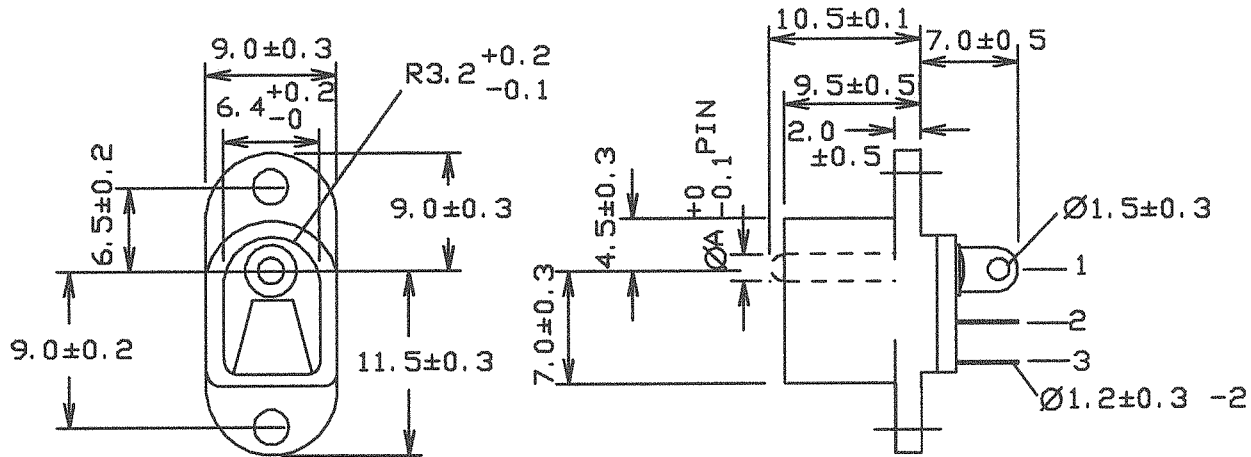


CLIFF

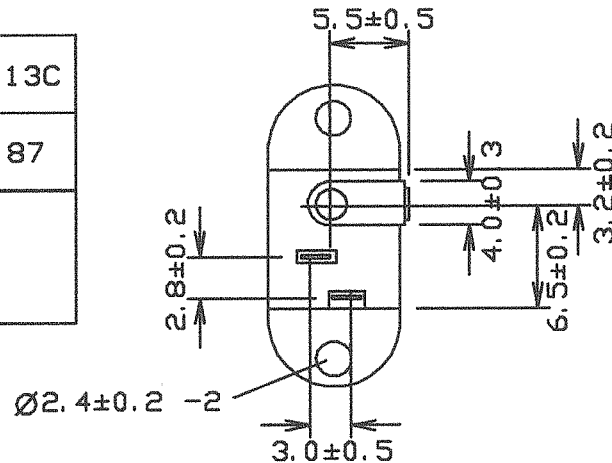
No.	AMEND	DATE
1.	REDRAWN	2/7/90
2.	MATL PBT	14/2/91



VARIANTS

MODEL	P/No.	PIN Ø
DC 13A	FC 681492	2.1
DC 13B	FC 681493	2.5
DC 13C	-	1.87

MODEL NO.	DC 13A	DC 13B	DC 13C
DIM A	2.1	2.5	1.87
SCHEMATIC			



RATED 12V DC 5A.

INTENDED FOR CHASSIS MOUNTING ONLY

**RoHS
COMPLIANT**

TOLERANCE

NO DEC. PLACE ± 0.2
 1 DEC PLACE ± 0.15
 2 DEC PLACE ± 0.10
 DIA OF HOLE ±
 ANGLES ±
 UNLESS OTHERWISE
 STATED

WHERE USED F.R.

SCALE N.T.S.

DIMENSIONS IN MILLIMETRES UNLESS OTHERWISE STATED. WORK TO DIMENSIONS. DO NOT SCALE DRAWING. 1st.ANGLE PROJECTION. REMOVE BURRS.

Cliff Electronic Components Limited 76, Holmethorpe Avenue Holmethorpe Industrial Estate Redhill, Surrey, RH1 2PF, England. Tel: Redhill (0737) 771375 Telex 8813346 Fax 0737-766012	MATERIAL	PBT / 20 PC GF / BRASS		TITLE DC POWER SOCKET DC13						
		(DJ-0705-025)								
	FINISH	AS MOULDED / SILVER PLATED		DRG. No. FC 681492						
	DRAWN	C.A.M.T.	APPD			R.W..T				
				A	4	D	R	W	G	H