

Overview

Compact, slim, general performance 3-phase filter for motor drives, servo drives, robotics, regenerative drives, battery chargers, inverters, converters, power drives, UPS, machine tools and other industrial applications. Terminal blocks for quick installation.

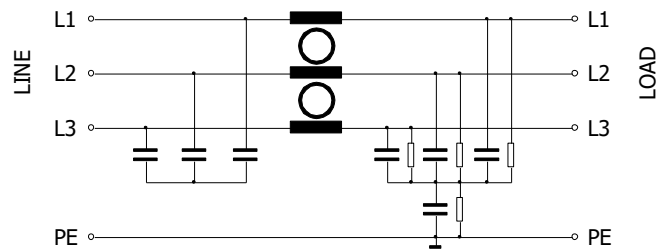


**RoHS
Compliant**

Technical specifications

| | |
|-------------------|------------------------------------|
| Rated voltage | 530/305 VAC |
| Rated frequency | 50-60 Hz |
| Rated current | 7 – 180 A |
| Rated temperature | 50°C |
| Temperature range | -25°C to +100°C |
| Climate category | 25/100/21 |
| Voltage test | P -> P 2250 VDC P -> E 3000 VDC |

Typical electrical schematic



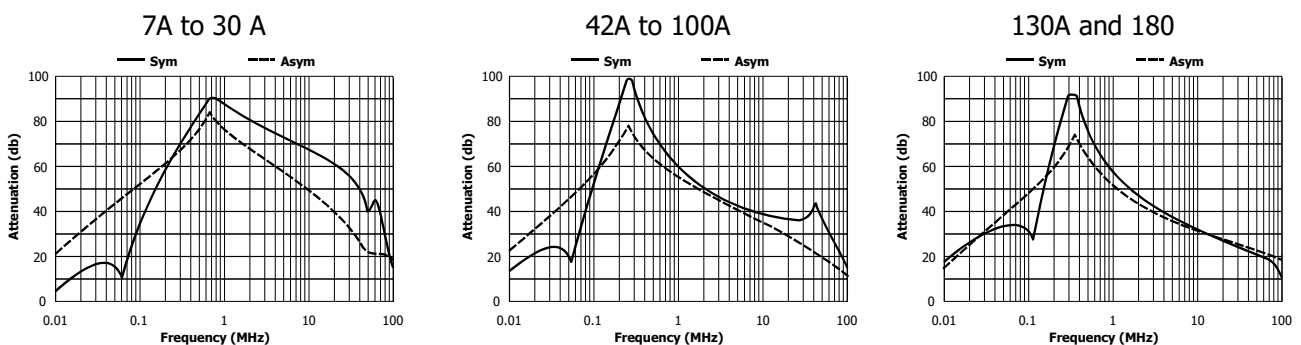
| Part Number | Rated current @ 50°C (A) | Power loss @ 25°C/50Hz (W) | Leakage current ¹⁾ (mA) | Approx. weight (kg) |
|---------------|--------------------------|----------------------------|------------------------------------|---------------------|
| FLLD3007AMHT3 | 7 | 4 | 3.1 | 0.5 |
| FLLD3016AMHT3 | 16 | 6 | 3.1 | 0.7 |
| FLLD3030AMHT3 | 30 | 12 | 4.7 | 1.1 |
| FLLD3042AMHT3 | 42 | 15 | 4.7 | 1.4 |
| FLLD3055AMHT5 | 55 | 20 | 4.7 | 2.0 |
| FLLD3075AMHT5 | 75 | 30 | 4.7 | 3.2 |
| FLLD3100AMHT6 | 100 | 32 | 4.7 | 4.5 |
| FLLD3130AMHT6 | 130 | 40 | 4.7 | 4.5 |
| FLLD3180AMHT7 | 180 | 45 | 4.7 | 5.1 |

¹⁾ Calculated according to IEC60939. During fail conditions the current may be higher.

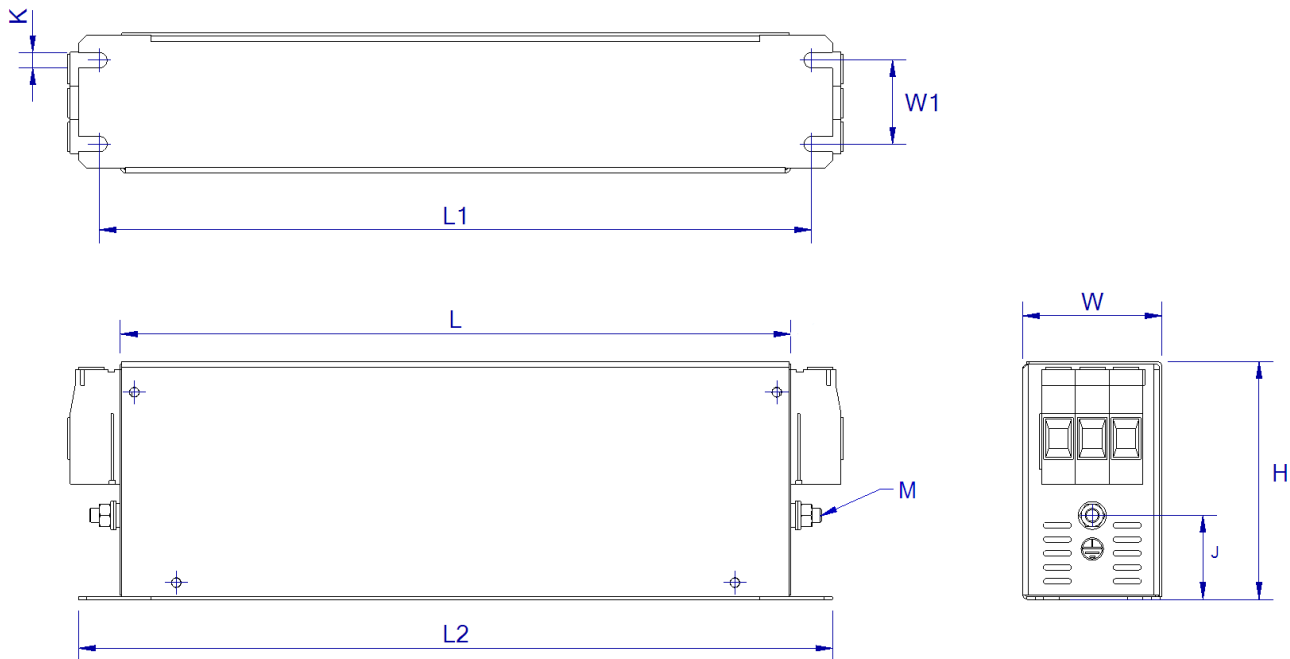
Approvals

IEC/EN 60939-3 Certification Body : DEMKO
 ANSI/UL 60939-3-2016 Certification Body : UL File : E490803

Typical insertion loss



Mechanical dimensions



| Part Number | Dimensions in mm | | | | | | | | |
|---------------|------------------|-----|-----|-----|-----|-----|----|-----|-----|
| | L | L1 | L2 | W | W1 | H | J | K | M |
| FLLD3007AMHT3 | 160 | 180 | 190 | 40 | 20 | 70 | 22 | 4.5 | M5 |
| FLLD3016AMHT3 | 220 | 235 | 250 | 45 | 25 | 70 | 22 | 5.5 | M5 |
| FLLD3030AMHT3 | 240 | 255 | 270 | 50 | 30 | 85 | 30 | 5.5 | M5 |
| FLLD3042AMHT3 | 280 | 295 | 310 | 50 | 30 | 85 | 30 | 5.5 | M6 |
| FLLD3055AMHT5 | 220 | 235 | 250 | 85 | 60 | 90 | 26 | 5.5 | M6 |
| FLLD3075AMHT5 | 240 | 255 | 270 | 80 | 60 | 135 | 70 | 6.5 | M6 |
| FLLD3100AMHT6 | 240 | 255 | 270 | 90 | 65 | 150 | 64 | 6.5 | M10 |
| FLLD3130AMHT6 | 240 | 255 | 270 | 90 | 65 | 150 | 64 | 6.5 | M10 |
| FLLD3180AMHT7 | 350 | 365 | 380 | 120 | 102 | 170 | 47 | 6.5 | M10 |

| Terminal block | |
|-------------------------|-------------|
| Wire (mm ²) | Torque (Nm) |
| 1 - 10 | 1.2 - 1.5 |
| 1 - 10 | 1.2 - 1.5 |
| 1 - 10 | 1.2 - 1.5 |
| 1 - 10 | 1.2 - 1.5 |
| 10 - 25 | 3 - 4 |
| 10 - 25 | 3 - 4 |
| 16 - 50 | 6 - 8 |
| 16 - 50 | 6 - 8 |
| 35 - 95 | 15 - 20 |

Tolerances, if not stated, according to ISO 2768-c.

Legal disclaimer notice

All product specifications, statements, information and data (collectively, the "information") are subject to change without notice.

All information given herein is believed to be accurate and reliable, but is presented without guarantee, warranty, or responsibility of any kind, expressed or implied.

Statements of suitability for certain applications are based on our knowledge of typical operating conditions for such applications, but are not intended to constitute – and we specifically disclaim – any warranty concerning suitability for a specific customer application or use.

This information is intended for use only by customers who have the requisite experience and capability to determine the correct products for their applications. Any technical advice inferred from this information or otherwise provided by us with reference to the use of our

products is given gratis, and we assume no obligation or liability for the advice given or results obtained.

Although we design and manufacture our products to the most stringent quality and safety standards, given the current state of the art, isolated component failures may still occur. Accordingly, customer applications which require a high degree of reliability or safety should employ suitable designs or other safeguards (such as installation of protective circuitry or redundancies) in order to ensure that failure of an electrical component does not result in a risk of personal injury or property damage.

Although all product-related warnings, cautions and notes must be observed, the customer should not assume that all safety measures are indicated or that other measures may not be required.