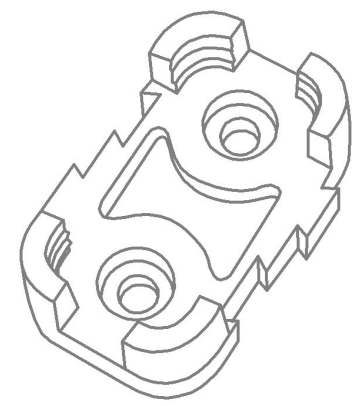
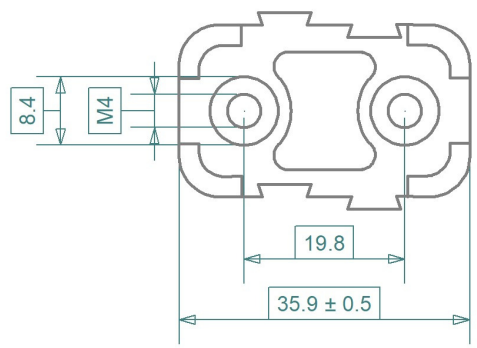
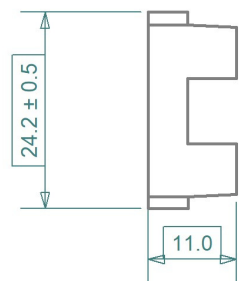
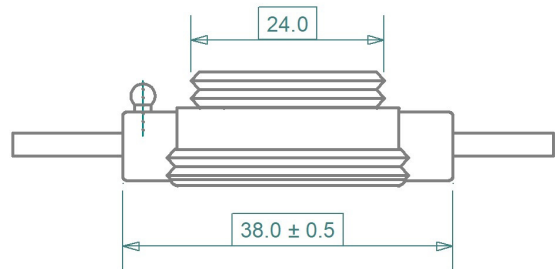
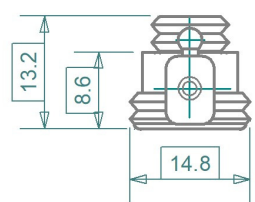


3D not to scale



iMaXX ref.	Description
H1325	230 ± 10mm cable each side cable 1.5mm ² , thin wall insulation, black for use with F1500 normOTO series up to 20A
H1335	230 ± 10mm cable each side cable 2.5mm ² , thin wall insulation, red for use with F1500 normOTO series up to 30A
H1307	Mounting bracket for H1300 series fuse holder

F1500 series normOTO blade fuse reference table:

Rating [A]	Color	Volt [V]	iMaXX Reference
1	Black	32	F1501
2	Gray	32	F1502
3	Violet	32	F1503
4	Pink	32	F1504
5	Tan	32	F1505
7.5	Brown	32	F1575
10	Red	32	F1510
15	Blue	32	F1515
20	Yellow	32	F1520
25	Natural	32	F1525
30	Green	32	F1530
35	Dark green	32	F1535
40	Orange	32	F1540

NOTES

- Cover can be attached using tether to:
1. cable (prior to installation): slip ring around cable
 2. fuse holder body: press ring over ball joint

Materials:

- Body: PUR black, UL94-V0
- Cover: Forprene black, UL94-V0
- Contacts: CuZn33, Sn plated, box type
- Bracket: PA66 GF30 black, UL94-V0

Revisions			Date	Appr.
	Date	Type	Drawn	10/02 GRH
a	10/05	re-designed body and contacts	Checked	04/21 BE
b	08/07	re-drawn	Standards	
c	11/08	add cable length, tolerance	Approved	04/21 AdH
d	06/13	updated tables and notes		
e	12/13	updated dimensions	Scale 1 : 1	
f	04/21	added H1307 bracket	Projection	Tolerance ± 0.2 mm unless otherwise noted
g	10/22	updated contact material		



Title	H1325/H1335 series normOTO fuse holder
Drawing type	schematic
Drawing number	H1325/H1335 drawing 1
Sheet	1 of 1
Layers / Sheet	0 1 2 6 8 9 11 Sheet 01