

Constant Current LED Power Supply Phasecut Dimmable



Product description:

This type of power supply is an exclusively designed stabilized power supply for LED lamp. With constant current (CC) technology, it is suitable for constant current lamps (350/500/700mA) connected in a series. The output current of the converter could be dimmed between 10%-100% by trailing or leading edge dimmers. The built-in protection circuit will shut down the converter in case of such faults as: open circuit, short circuit, over load, over temperature. The power supply will restart automatically after fault correction.

Standards:

EN61347-1
EN61347-2-13
EN61547
EN55015
EN61000-3-2
EN61000-3-3
EN62384
EN62493

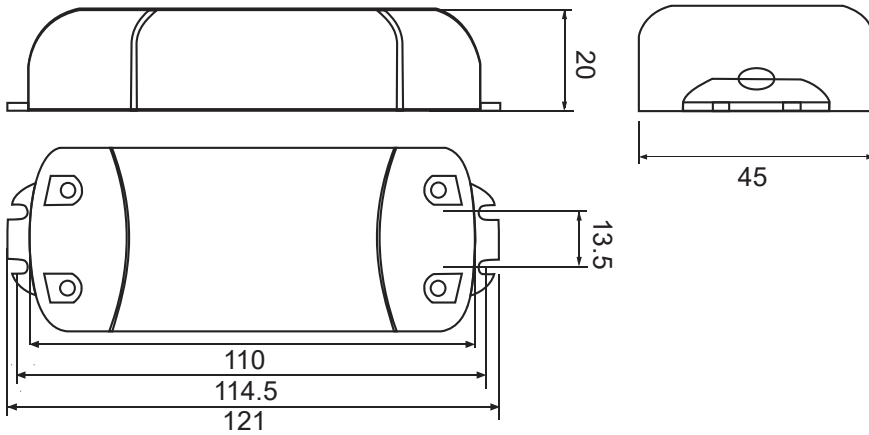
Characteristics:

- Independent dimmable power supply for constant current LED lamp
- Terminal block quick connection
- Class II protection against electric shock from direct and indirect contact
- The output current of the power supply could be dimmed between 10%-100% by trailing edge or leading edge dimmers
- Ripple free constant output current
- High compatible for different dimmers
- Quiet design, working noise is less than 30dB
- Open circuit, short circuit, over load and over temperature protection
- Auto restart after fault conditions removal
- Efficiency: 82% (AC230V, full load)
- 5 years warranty

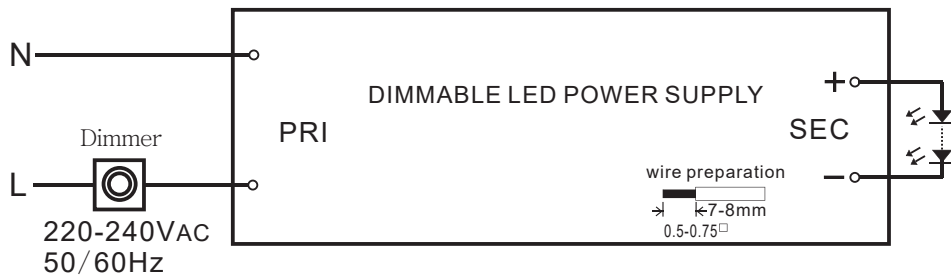
Specifications :

Model	SLD20-350IL-Es	SLD20-500IL-Es	SLD20-700IL-Es	
Output	turn on time(S)	≤0.5	≤0.5	≤0.5
	output current(mA)	350	500	700
	output current tolerance ^①	+/-5%	+/-5%	+/-5%
	ripple current(mA)	50	80	100
	working voltage range(V)	30-50	20-38	19-29
	Max. output voltage(V)	59	50	50
	dimming interface	Leading or Trailing Edge		
	dimming range	10-100%		
Input	rated supply voltage(Vac)	220-240	220-240	220-240
	voltage range(Vac)	198-264	198-264	198-264
	line frequency(Hz)	50/60	50/60	50/60
	input current(mA)	120	120	120
	efficiency ^②	81.8%	80.8%	78.5%
	power factor ^②	0.90	0.90	0.90
	inrush current(lpK)	2A/15us	2A/15us	2A/15us
Protection	over voltage protection	320Vac, 1 hour		
	short circuit protection	In case of a short circuit on the secondary side, the ECG will switch off		
	over temperature protection	ECG switches off if the temperature reaches a certain degree		
	automatic restart	ECG works in pulsed light output mode		
	over load protection	After elimination of the fault condition the ECG will recover automatically		
	surge capacity	L-N:0.5KV		
Ambient and Life	Ta(°C)	-20...40		
	Tc max. (°C)	90		
	Storage Temperature(°C)	-30...80		
	ambient humidity range	5%...85%RH, Not condensing		
	nominal life-time(hrs)	350mA:35000@TC with dimmer 500mA:35000@TC with dimmer 700mA:30000@TC with dimmer		
	weight(g)	75		
	dimensions (LxWxH)(mm)	121x45x20		
Other	casing material	Plastic		
	housing colour	Grey+Blue		
	type of protection	IP20		
	protection class	CLASS II		
	Note	<p>1.Tolerance : includes set up tolerance, line regulation and load regulation. 2.Tested at full load,230Vac.Refer to"Power Factor" and "EFFICIENT"curve graphs. 3.All parameters NOT specially mentioned are measured at nominal voltage input, rated load, 25 of ambient temperature and no dimmer. 4.The power supply is considered as a component that will be operated in combination with final equipment. Since EMC performance will be affected by the complete installation, the final equipment manufacturers must re-qualify EMC Directive on the complete installation again.</p>		

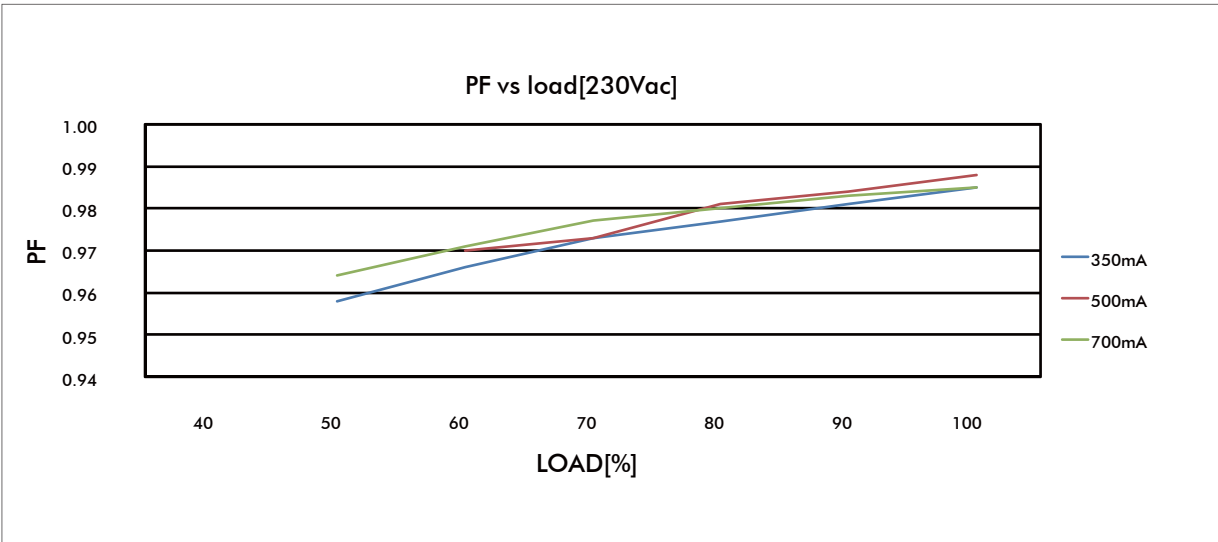
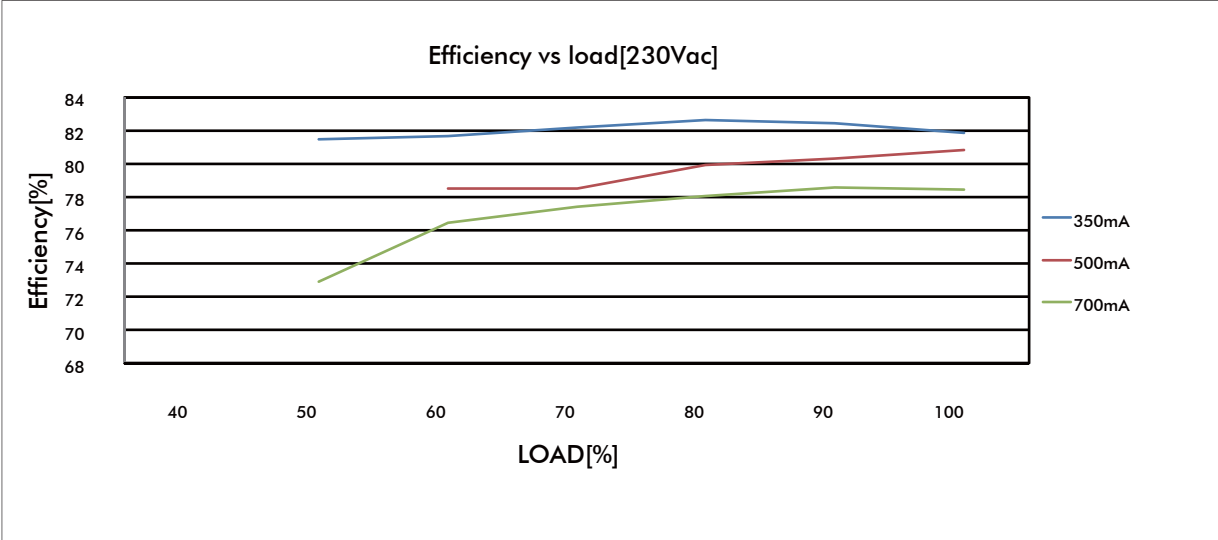
Dimensions(mm):



Wiring diagram:



Electrical curves:



MCBS information:

Miniature circuit breaker Model Model	B10	B13	B16	B20	C10	C13	C16	C20
SLD20-350IL-Es	40	55	70	87	72	87	119	140
SLD20-500IL-Es	40	55	70	87	72	87	119	140
SLD20-700IL-Es	40	55	70	87	72	87	119	140

Order information:

Order.No.	Model	Carton quantity(pcs)	Carton dimension(mm)	G.W./CTN(kg)
1001-660279-0130	SLD20-350IL-Es	100	275*265*270	13.5
1001-660271-0130	SLD20-500IL-Es	100	275*265*270	13.8
1001-660280-0130	SLD20-700IL-Es	100	275*265*270	12.3

Sales & Technical Support:

SELF Electronics Co.,Ltd.(Headquarters)

Add: No. 1345 JuXian Road, Ningbo Hi Tech Park, Ningbo, China 315103
 Phone: +86-574-2880-5765, +86-574-2880-5658 (for English assistance)
 +86-574-2880-5678 (for Chinese assistance)
 Fax: +86-574-28805656
 E-mail: sales@self-electronics.com
<http://www.self-electronics.com>

Self Electronics Co.,Ltd.,Shenzhen Office

Add: Room2007, Xinglang Xuan, Xinghemingju, Fuming Rd.,
 Futian District, Shenzhen
 Tel: +86-755-8355-8850
 Fax: +86-755-8355-8840
 E-mail: szsales@self-electronics.com

SELF Electronics Germany GmbH

August-Horch-Str. 7, 51149 Cologne
 Phone: +492203-18501-0
 Fax: 492203-18501-199
 E-mail: saleseu@self-electronics.com

*Due to continuous improvements and innovations, specifications are subjected to change without notice.