

8A, 650V SiC Merged PIN Schottky Diode

FEATURES

- Max junction temperature 175°C
- MPS structure for high ruggedness to forward current surge events
- High-speed switching possible
- High forward surge capability
- High-frequency operation
- Positive temperature coefficient on V_f
- RoHS compliant
- Halogen-free

APPLICATIONS

- General purpose
- Switch mode power supplies
- Power factor correction

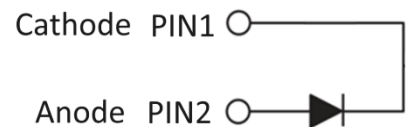
MECHANICAL DATA

- Case: ITO-220AC-2L
- Molding compound meets UL 94V-0 flammability rating
- Terminal: Matte tin plated leads, solderable per J-STD-002
- Polarity: As circuit diagram
- Weight: 1.65g (approximately)

| KEY PARAMETERS | | |
|----------------|--------------|------|
| PARAMETER | VALUE | UNIT |
| I_F | 8 | A |
| V_{RRM} | 650 | V |
| I_{FSM} | 72 | A |
| $T_{J\ MAX}$ | 175 | °C |
| Package | ITO-220AC-2L | |
| Configuration | Single die | |



ITO-220AC-2L



| ABSOLUTE MAXIMUM RATINGS ($T_A = 25^\circ\text{C}$ unless otherwise noted) | | | |
|--|---------------------------|-------------|------|
| PARAMETER | SYMBOL | VALUE | UNIT |
| Repetitive peak reverse voltage | V_{RRM} | 650 | V |
| Reverse voltage, total rms value | $V_{R(RMS)}$ | 455 | V |
| Continuous Rectified Forward Current @ $T_J = 147^\circ\text{C}$ | I_F | 8 | A |
| Surge peak forward current 10ms single half sine-wave superimposed on rated load | $T_C = 25^\circ\text{C}$ | I_{FSM} | 72 |
| | $T_C = 125^\circ\text{C}$ | | 60 |
| Junction temperature | T_J | -55 to +175 | °C |
| Storage temperature | T_{STG} | -55 to +175 | °C |

| THERMAL PERFORMANCE | | | | |
|-------------------------------------|-----------------|-----|-----|---------------|
| PARAMETER | SYMBOL | TYP | MAX | UNIT |
| Junction-to-case thermal resistance | $R_{\theta JC}$ | 2.2 | 2.6 | $^{\circ}C/W$ |

| ELECTRICAL SPECIFICATIONS ($T_A = 25^{\circ}C$ unless otherwise noted) | | | | | |
|--|--------------------------------|--------|------|------|---------|
| PARAMETER | CONDITIONS | SYMBOL | TYP | MAX | UNIT |
| Forward voltage ⁽¹⁾ | $I_F = 4A, T_J = 25^{\circ}C$ | V_F | 1.15 | - | V |
| | $I_F = 8A, T_J = 25^{\circ}C$ | | 1.35 | 1.45 | V |
| | $I_F = 4A, T_J = 150^{\circ}C$ | | 1.18 | - | V |
| | $I_F = 8A, T_J = 150^{\circ}C$ | | 1.54 | - | V |
| | $I_F = 4A, T_J = 175^{\circ}C$ | | 1.20 | - | V |
| | $I_F = 8A, T_J = 175^{\circ}C$ | | 1.61 | 1.85 | V |
| Reverse current @ rated V_R ⁽²⁾ | $T_J = 25^{\circ}C$ | I_R | - | 20 | μA |
| | $T_J = 175^{\circ}C$ | | - | 200 | μA |
| Junction capacitance | $f = 1MHz, V_R = 1V$ | C_J | 383 | - | pF |
| | $f = 1MHz, V_R = 200V$ | | 56.8 | - | pF |
| | $f = 1MHz, V_R = 400V$ | | 39.0 | - | pF |
| Capacitive Charge | $V_R = 400V$ | Q_C | 27.1 | - | nC |

Notes:

1. Pulse test with $PW = 0.3ms$
2. Pulse test with $PW = 30ms$

| ORDERING INFORMATION | | |
|-----------------------------|--------------|-----------|
| ORDERING CODE | PACKAGE | PACKING |
| TSCDF08065G1 | ITO-220AC-2L | 50 / Tube |

CHARACTERISTICS CURVES

($T_A = 25^\circ\text{C}$ unless otherwise noted)

Fig.1 Typical Forward Characteristics

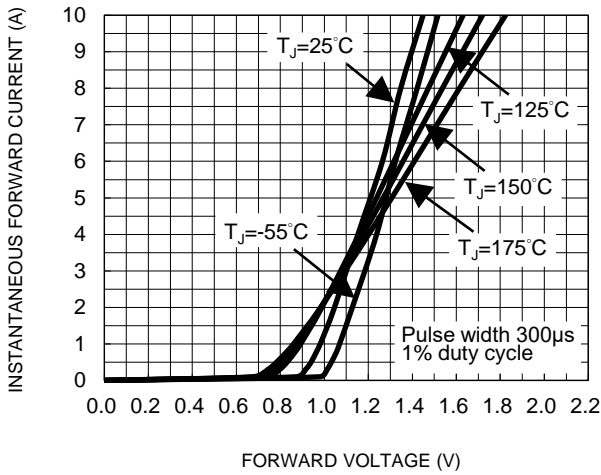


Fig.2 Typical Reverse Characteristics

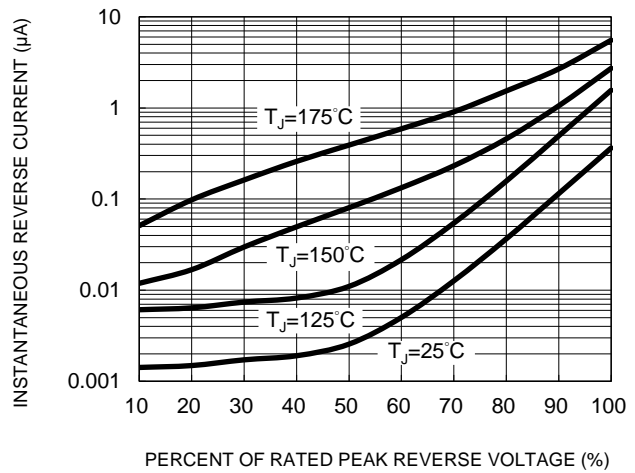


Fig.3 Peak forward current versus case temperature

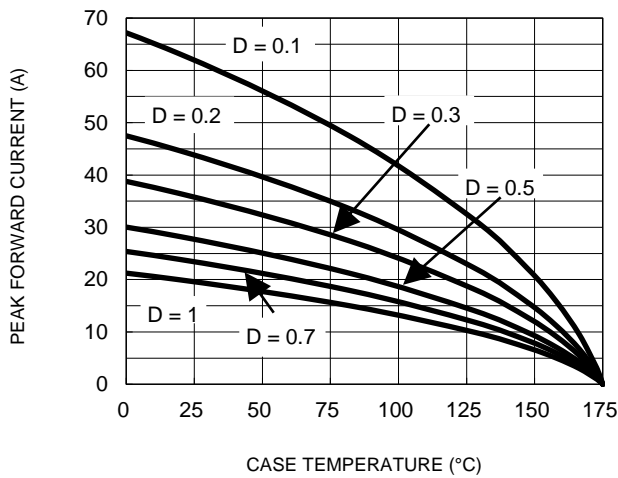


Fig.4 Typical Junction Capacitance

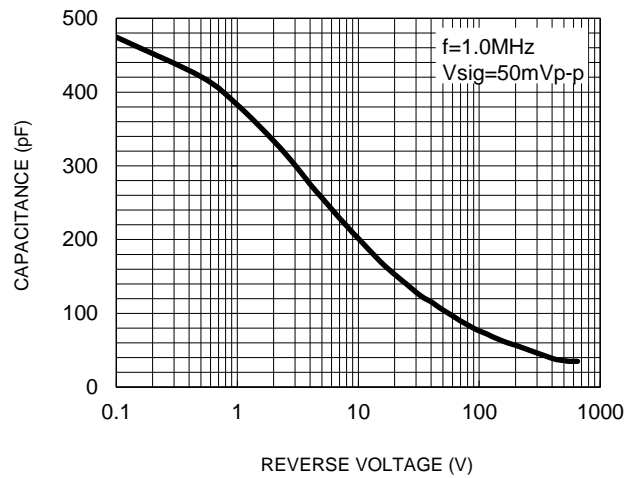


Fig.5 Typical Capacitive Charge

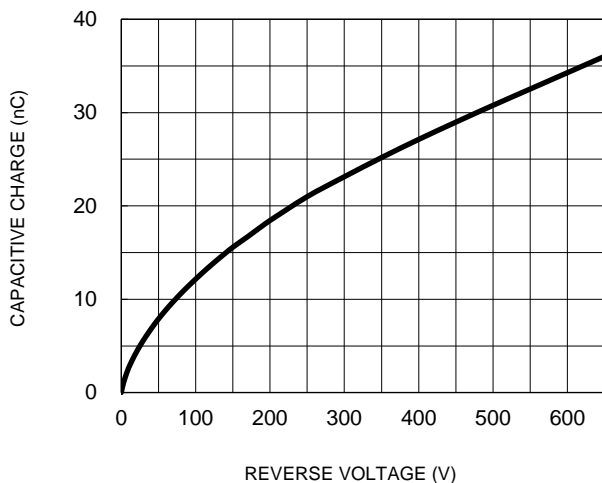
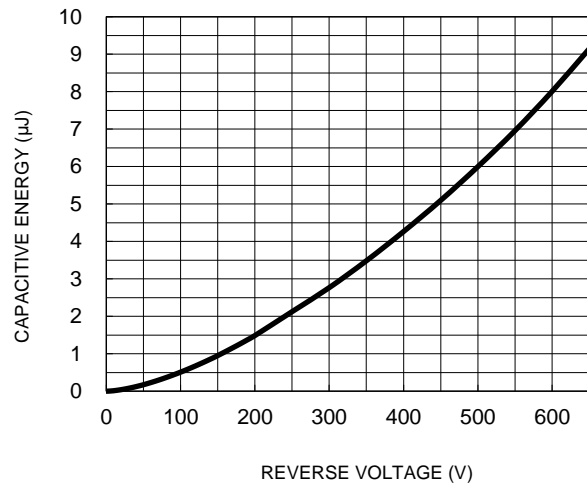


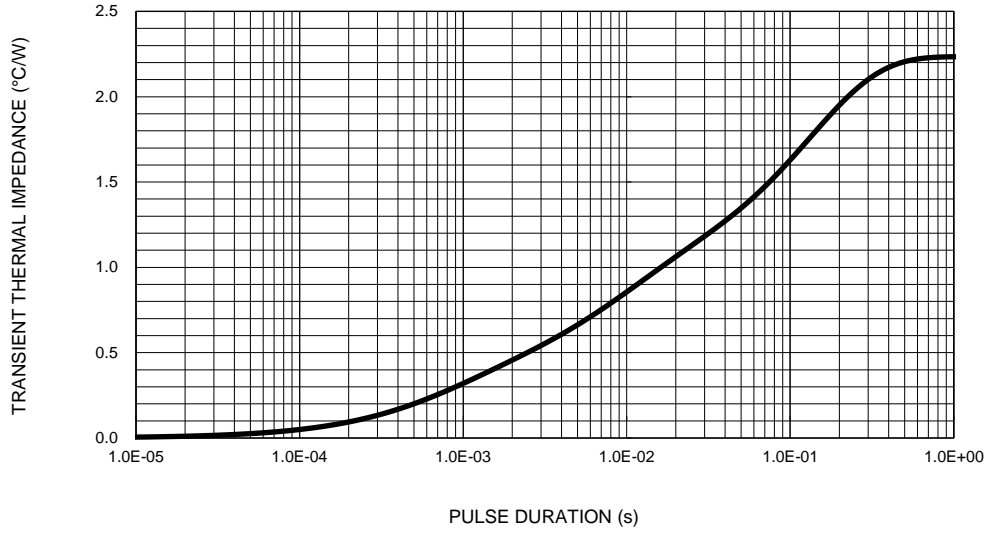
FIG.6 Typical Capacitance Stored Energy



CHARACTERISTICS CURVES

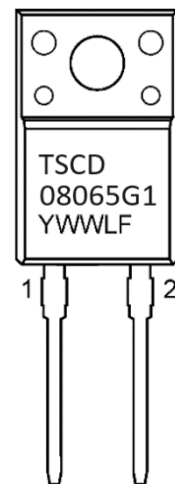
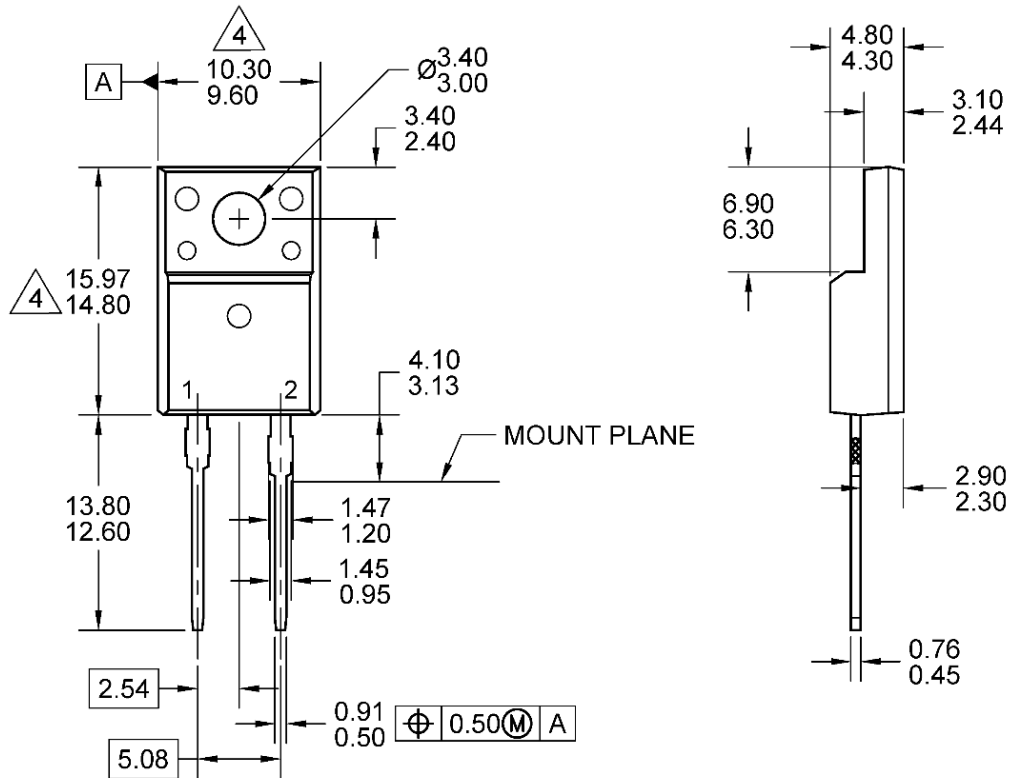
($T_A = 25^\circ\text{C}$ unless otherwise noted)

Fig.7 Typical Transient Thermal Characteristics



PACKAGE OUTLINE DIMENSIONS

ITO-220AC-2L



NOTES: UNLESS OTHERWISE SPECIFIED

1. ALL DIMENSIONS ARE IN MILLIMETERS.
2. DIMENSIONING AND TOLERANCING PER ASME Y14.5M-1994.
3. PACKAGE OUTLINE REFERENCE: EIAJ ED-7500A-1, SC-91.
4. THIS DO NOT INCLUDE MOLD FLASH. THESE DIMENSIONS ARE MEASURED AT THE OUTERMOST EXTREME OF THE PLASTIC BODY.
5. DWG NO. REF: HQ2SD07-ITO220ACSiC-120 REV A.

MARKING DIAGRAM

- Y = YEAR CODE
- WW = WEEK CODE (01~52)
- L = LOT CODE (1~9, A~Z)
- F = FACTORY CODE

Notice

Specifications of the products displayed herein are subject to change without notice. TSC or anyone on its behalf assumes no responsibility or liability for any errors or inaccuracies.

Purchasers are solely responsible for the choice, selection, and use of TSC products and TSC assumes no liability for application assistance or the design of Purchasers' products.

Information contained herein is intended to provide a product description only. No license, express or implied, to any intellectual property rights is granted by this document. Except as provided in TSC's terms and conditions of sale for such products, TSC assumes no liability whatsoever, and disclaims any express or implied warranty, relating to sale and/or use of TSC products including liability or warranties relating to fitness for a particular purpose, merchantability, or infringement of any patent, copyright, or other intellectual property right.

The products shown herein are not designed for use in medical, life-saving, or life-sustaining applications. Customers using or selling these products for use in such applications do so at their own risk and agree to fully indemnify TSC for any damages resulting from such improper use or sale.