

Solid State Relays

Datasheet WG A8 8D, 10D, 12D

Comus International Bvba
 Overhaamlaan 40
 3700 Tongeren, Belgium
 Phone: +32 12390400
 Fax: +32 12235754
 Email: info@comus.be
 www.comus.be



Features

Switching Zero cross & Random

Output Triac

Input DC with constant current control

Applications

Resistive and inductive loads with $\cos\phi > 0.85$ (Z-type)
 inductive load with $\cos\phi > 0.65$ (R-type)

Technical data

| WG A8 | 8D 05 | 10D 05 | 12D 05 |
|---|--|-----------------------|-----------------------|
| Input circuit | | | |
| Control voltage range | 3...32 VDC | | |
| Control current max | 22 mA | | |
| Turn-off voltage min.. | 1 VDC | | |
| Input resistance | Constant current | | |
| Output circuit | | | |
| | TRIAC | TRIAC | ALTERNISTOR |
| Load voltage range | 24...420 VAC | 24...480 VAC | 24...480 VAC |
| Peak-off state voltage | 800 V _{drm} | 1000 V _{drm} | 1200 V _{drm} |
| Off-state leakage current | 5 mA eff. | | |
| Load current range | 5 A | | |
| Surge current 1 half wave | 120 A _{peak} | | |
| I ² t for fusing | 72 A ² s | | |
| On-state voltage | 1,6 V _{peak} | | |
| Off-state (static) dv/dt | 500 V/μs | | |
| Snubber | 47 Ω / 10 nF | | |
| General data | | | |
| Turn-on time max. | 11 ms (WG A8 ...D 05 Z zero cross type) 0.1 (WG A8 ...D 05 R random switching-type) | | |
| Turn-off time max. | 11 ms | | |
| Line frequency range. | 47...63 Hz | | |
| Isolation volt. between input/output | 4.000 V | | |
| Isolation volt. between input-output/base | — | | |
| Isolation resistance | 50 MΩ | | |
| Operation temperature | -20...+80 °C | | |
| Recommended varistor | SIOV-S14 K230 | | |
| Approvals | — | — | VDE |
| RoHS conform | YES | | |

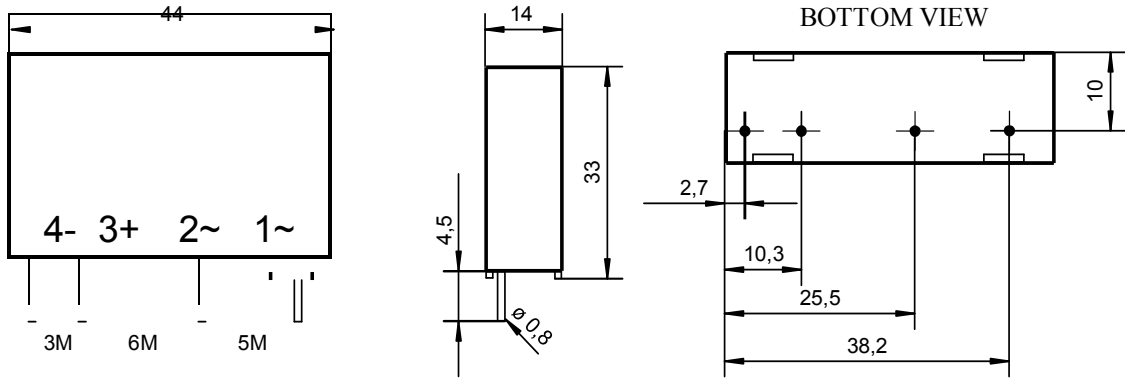
Solid State Relays

Datasheet WG A8 8D, 10D, 12D

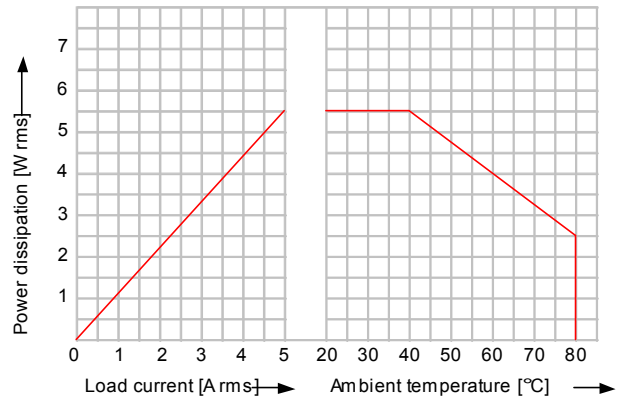
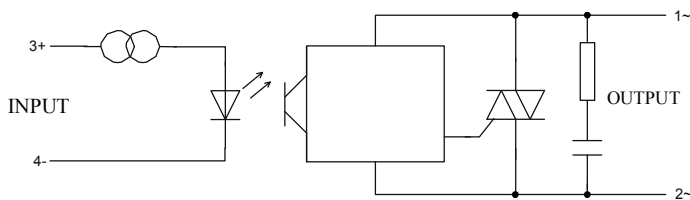
Comus International Bvba
 Overhaamlan 40
 3700 Tongeren, Belgium
 Phone: +32 12390400
 Fax: +32 12235754
 Email: info@comus.be
 www.comus.be



Dimensions in mm



Circuit diagram



Housing specifications

| | |
|------------------|------------------------|
| Weight | Ca. 35 g |
| Housing material | Glass filled polyester |
| Potting compound | UL recognized Epoxy |
| Terminals | Solder pins |

Ordering

