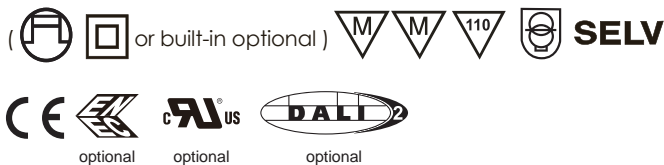


# LED power supply

## Constant Current Dimming

### Compact DALI2

SLD35-1000IBD-UN(for build-in use)  
SLD35-1000ILD-UN(for independent use)



#### Product description:

This type of compact constant current power supply with 110-277Vac input voltage has very high efficiency and low power loss.

Designed with high power factor and ripple free, it can be used either built-in or independently. The output current can be set by the DIP switch, and the output current can be switched every 50mA from 250mA to 1000mA.

With newest DALI2.0 technology, this power supply can be dim from 1%-100%

It conforms to SELV standard and the built-in protection circuit will shut down the converter in case of such faults as: open circuit, short circuit, over load, over temperature. The power supply will restart automatically after fault correction.

#### Standards:

EN61347-1  
EN61347-2-13  
EN61547  
EN55015  
EN61000-3-2  
EN61000-3-3  
EN62384  
EN62493  
UL1310  
FCC 15B  
EN62386:101,102,207 Version2

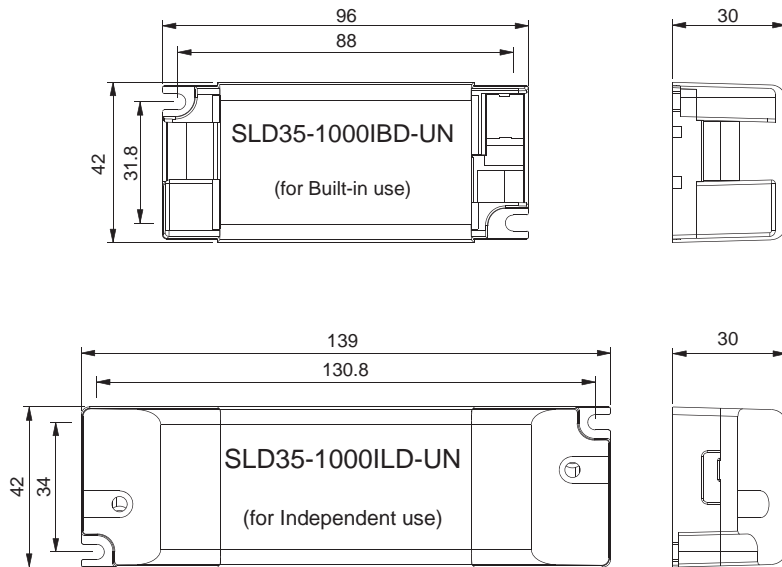
#### Characteristics:

- Independent or built-in power supply for constant current LED lamp
- Multipower driver supplied with dip-switch for the selection of the output current from 250-1000mA
- Class II protection against electric shock for direct or indirect contact
- 1-100% dimming range by DALI2
- Universal input voltage from 110-277V
- Push-in terminal block for quick connection
- It can be used for lighting equipment in protection class I and II
- Ripple free in all dimming range
- Start-up time  $\leq 0.5S$
- Open circuit, short circuit, over load and over temperature protection
- Auto restart after fault conditions removal
- Warranty :5 Years

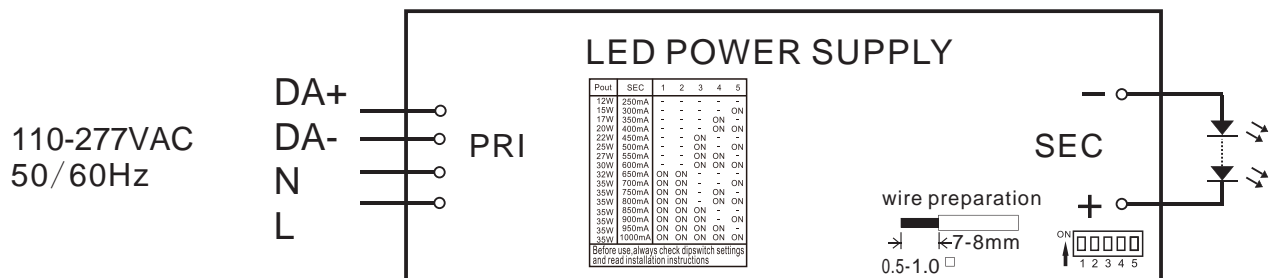
## Specifications :

Model	SLD35-1000IB/LD-UN	
Output	turn on time(S) <sup>1</sup>	≤0.5
	output current(mA) <sup>1</sup>	250/300/350/400/450/500/550/600/650/700/750/800/850/900/950/1000
	output current tolerance <sup>2</sup>	+/-5%
	ripple current(%) <sup>3</sup>	≤3%
	working voltage range(V)	8-42 details refer to label
	output power range(W)	2-35 details refer to label
	Max. output voltage(V)	55
	output safety rating	SELV
	dimming interface	supplementary insulation DALI2.0 interface
	dimming range	1%-100% linear & exponent
Input	rated supply voltage(Vac)	110-277
	voltage range(Vac)	100-305
	DC voltage range(Vdc)	176-280
	line frequency(Hz)	50/60
	input current(mA)	420
	input power(W) <sup>1</sup>	MAX 40
	efficiency <sup>1</sup>	87% (Rrefere to Electrical curves)
	power factor <sup>1</sup>	≥0.95(Rrefere to Electrical curves)
	THD <sup>1</sup>	<10%@230V@full load any current presetting
Protection	short circuit protection	yes
	over temperature protection	yes
	automatic restart	yes
	over load protection	yes
	surge capacity	L-N: 1KV
Ambient and Life	Ta(°C)	-25...+40°C@110V~120V&-25...+45°C@220-240V&277V
	Tc max. (°C)	90
	nominal life-time(hrs)	50'000@Ta=50°C
	guarantee(years)	5
	Storage Temperature(°C)	-30...80
	ambient humidity range	5%...85%RH, Not condensing
	audible noise(dB)	30dBA tested@10cm
Other	weight(g)	180
	dimensions (LxWxH)(mm)	96x42x30/139x42x30
	casing material	Plastic
	housing colour	Grey+blue end cap
	connecting method	push-in terminal block
	type of protection	IP20
	protection class	ClassII for EU,class 2 for UL
Note	1. At 230Vac,50Hz,full load. 2. Tolerance:includes set up tolerance,line regulation and load regulation. 3. At 230Vac,50Hz,LED load,blew 200Hz	

**Dimensions(mm):**



**Wiring diagram:**

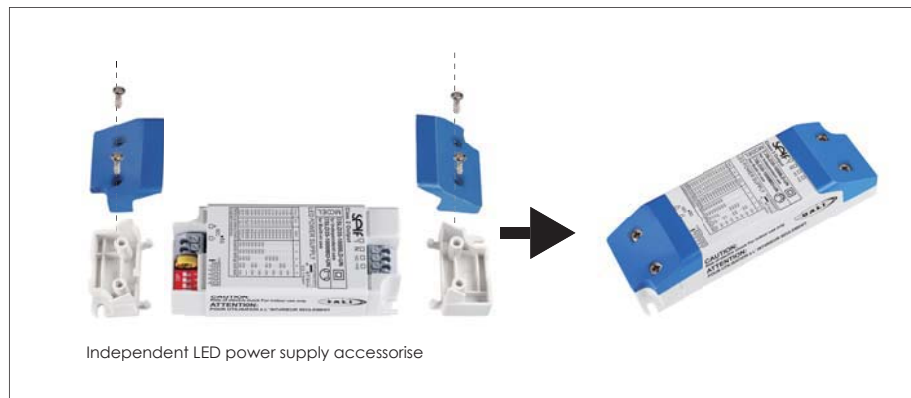


**Application:**

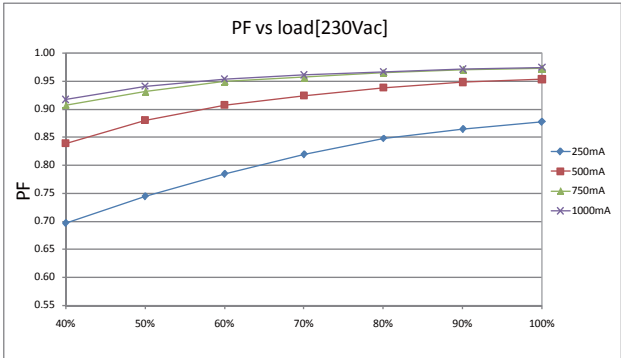
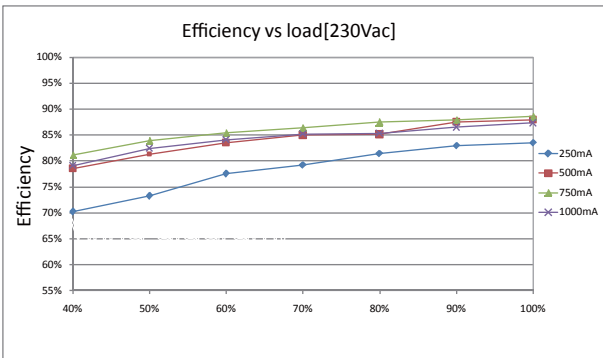
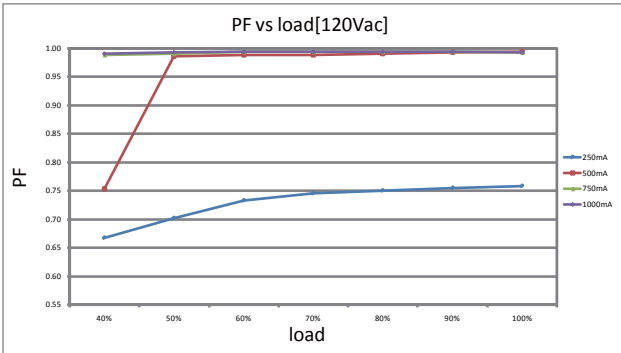
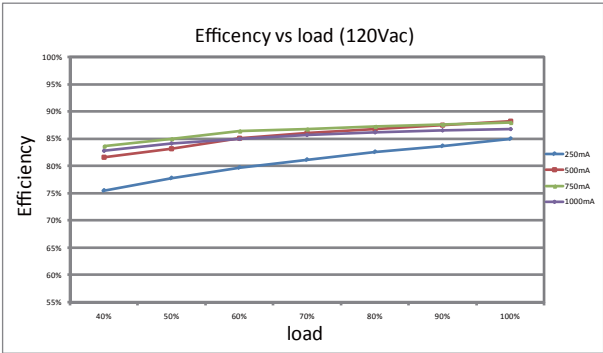
Built-in application



Independent application



**Electrical curves:**



note  
For constant current power supply,"LOAD" means the percentage of the maximum rated output voltage.  
For constant voltage power supply,"LOAD" means the percentage of the maximum rated output current.



## MCBS information:

Miniature circuit breaker Model Model	B10	B13	B16	B20	C10	C13	C16	C20
SLD35-1000IBD-UN	16	21	26	32	27	32	44	52
SLD35-1000ILD-UN	16	21	26	32	27	32	44	52

## Order information:

Order.No.	Model	Carton quantity(pcs)	Carton dimension(mm)	G.W./CTN(kg)
1001-260149-0130	SLD35-1000IBD-UN	50	280*235*255	8.9
1001-860006-0130	SLD35-1000ILD-UN	50	305*275*225	10.4

## Sales & Technical Support:

### SELF Electronics Co.,Ltd.(Headquarters)

Add: No. 1345 JuXian Road, Ningbo Hi Tech Park, Ningbo, China 315103  
 Phone: +86-574-2880-5765, +86-574-2880-5658 (for English assistance)  
 +86-574-2880-5678 (for Chinese assistance)  
 Fax: +86-574-28805656  
 E-mail: sales@self-electronics.com  
<http://www.self-electronics.com>

### Self Electronics Co.,Ltd.,Shenzhen Office

Add: Room2007, Xinglang Xuan, Xinghemingju, Fuming Rd.,  
 Futian District, Shenzhen  
 Tel: +86-755-8355-8850  
 Fax: +86-755-8355-8840  
 E-mail: szsales@self-electronics.com

### SELF Electronics Germany GmbH

August-Horch-Str. 7, 51149 Cologne  
 Phone: +492203-18501-0  
 Fax: 492203-18501-199  
 E-mail: saleseu@self-electronics.com

\*Due to continuous improvements and innovations, specifications are subjected to change without notice.