

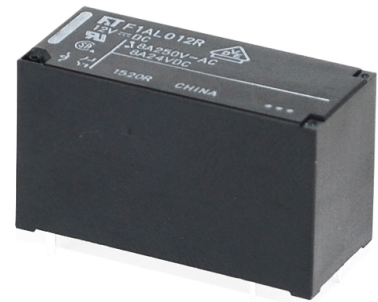
POWER RELAY

2 POLES - 8A Low Profile Type

FTR-F1 R Series

■ FEATURES

- DPST/DPDT 8A
- Low profile power relay (height 16.5 mm) employing unique construction
- High insulation by employing reinforced insulation construction
 Insulation distance: 8 mm (between coil and contact)
 Dielectric strength: 5 kV (between coil and contact)
 Surge strength: 10 kV (between coil and contact)
- UL, CSA, VDE recognized
- Flux proof sealing, RTII
- RoHS Compliant
 Please see page 6 for more information



■ PARTNUMBER INFORMATION

[Example] FTR-F1 A L 005 R - RW
 (a) (b) (c) (d) (e) (f)

(a)	Relay type	FTR-F1	: FTR-F1-Series
(b)	Contact configuration	A C	: 2 form A (DPST-NO) : 2 form C (DPDT)
(c)	Coil type / enclosure	A L	: Standard type (530mW, 2 form C) : High sensitive type (400mW)
(d)	Coil rated voltage	005	: 1.5...110VDC (High sensitive type: 1.5...48V) Coil rating table at page 3
(e)	Contact rating	R	: 8A
(f)	Special type	Nil RG	: Standard type : Transparent cover type

Actual marking does not carry the type name : "FTR"
 E.g.: Ordering code: FTR-F1AL005R Actual marking: F1AL005R
 FTR-F1AA()R(-RG) are not available

FTR-F1 SERIES

■ SPECIFICATION

Item	Standard type F1(A/C)(A/L)() R		Transparent type F1 (A/C)(A/L) () R-RG
Contact Data	Configuration		2 form A (DPST-NO), 2 form C (DPDT)
	Construction		Single
	Material		Movable: Gold plate silver tin oxide; Stationary: Silver tin oxide
	Resistance (initial)		Max. 100mΩ at 1A, 6VDC
	Contact rating		8A, 250VAC / 24VDC
	Max. carrying current		8A
	Max. switching voltage		400VAC/ 300VDC
	Max. switching power		2,000VA, 192W
	Min. switching load *1		10mA, 5VDC
Life	Mechanical		Min. 20x 10 ⁶ operations
	Electrical	AC load	Min. 50 x 10 ³ operations
		DC load	Min. 50 x 10 ³ operations
Coil Data	Rated Power (at 20°C)		Standard type: 530~550mW *2 /High sensitive type: 400mW
	Operate Power (at 20°C)		Standard type: 260~270mW *2 /High sensitive type: 225mW
	Operating temperature range		-40 to +75 °C (no frost) -40 to +70 °C (no frost)
Timing Data	Operate (at nominal voltage)		Max. 15ms (no diode, without bounce)
	Release (at nominal voltage)		Max. 5ms (no diode, without bounce)
Insulation	Resistance (Initial)		Min. 1,000MΩ at 500VDC
	Dielectric strength	Open contacts	1,000VAC (50/60Hz) 1min.
		Coil and contacts	5,000VAC (50/60Hz) 1min.
		Adjacent contacts	3,000VAC (50/60Hz) 1 min.
	Surge strength	Coil and contacts	10.000V/ 1.2 x 50μs standard wave
	Clearance		8 mm
	Creepage		8 mm
	EN61810-1, VDE0435	Voltage	250V
		Pollution degree	3
		Material group	IIIa
	Category	C / 250V (reference voltage) (VDE0110b)	
Other	Vibration Resistance	Misoperation	10 to 55 to 10 Hz single amplitude 0.825mm
		Endurance	10 to 55 to 10 Hz single amplitude 1.65mm
	Shock	Misoperation	Min. 100 m/s ² (11 ± 1ms)
		Endurance	Min. 1,000 m/s ² (6 ± 1ms)
	Weight		Approximately 12 g
Sealing		Flux proof, RTII	

*1: Minimum switching loads mentioned above are reference values. Please perform the confirmation test with actual load before production since reference values may vary according to switching frequencies, environmental conditions and expected reliability levels.

*2: Standard sensitiveness is applicable for 2c (DPDT)

FTR-F1 SERIES

■ COIL RATING

530mW type (Standard)

Coil Code	Rated Coil Voltage (VDC)	Coil Resistance +/- 10% (Ohm)	Must Operate Voltage (VDC) *	Must Release Voltage (VDC) *	Rated Power (mW)
1.5	1.5	4.2	1.05	0.15	530
005	5	47	3.5	0.5	
006	6	68	4.2	0.6	
009	9	155	6.3	0.9	
012	12	270	8.4	1.2	
024	24	1,100	16.8	2.4	
048	48	4,400	33.6	4.8	
060	60	6,800	42.0	6.0	550
110	110	22,000	77.0	11.0	

400mW type (High sensitive)

Coil Code	Rated Coil Voltage (VDC)	Coil Resistance +/- 10% (Ohm)	Must Operate Voltage (VDC) *	Must Release Voltage (VDC) *	Rated Power (mW)
1.5	1.5	5.6	1.125	0.15	400
003	3	22.5	2.25	0.3	
005	5	62	3.75	0.5	
006	6	90	4.5	0.6	
009	9	202	6.75	0.9	
012	12	360	9	1.2	
024	24	1,440	18	2.4	
048	48	5,760	36	4.8	

Note 1: All values given in the coil table(s) are valid at 20°C ambient temperature, at zero contact current, without pre-energizing and * are specified at pulse wave voltage.

Note 2: When applying a higher than rated coil voltage, please refer to the "coil temperature rise" and "operating range". Reference graphs for the effects on the relay operating behaviour.

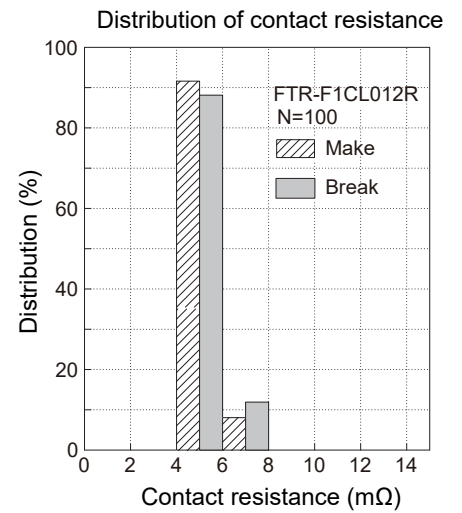
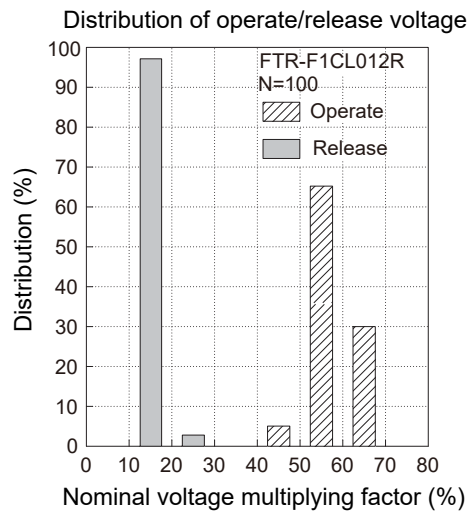
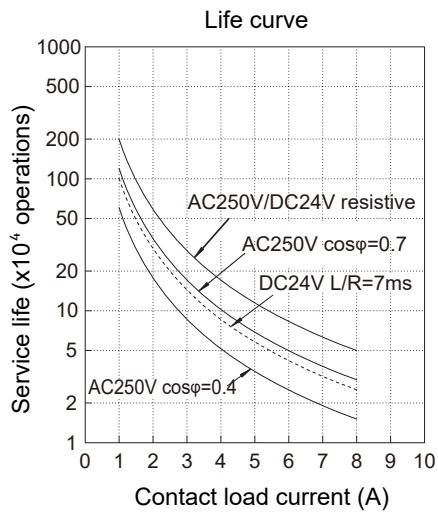
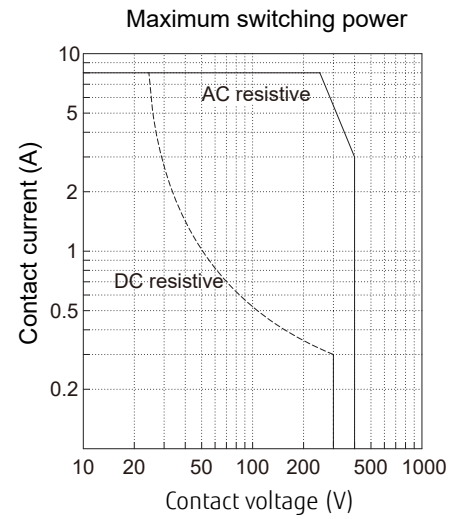
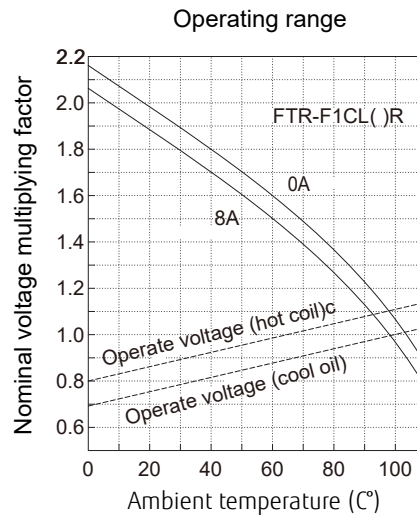
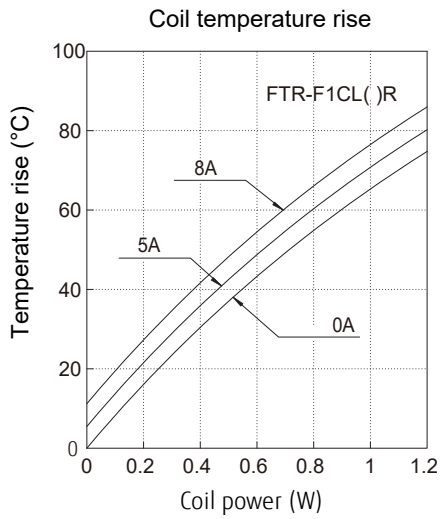
■ SAFETY STANDARDS

Type	Compliance	Contact rating
UL	UL 508 (No. E63614)	Flammability: UL 94-V0 (plastics) 8A, 24VDC (resistive) 8A, 250VAC (resistive)
CSA	C22.2 No. 14 (No. LR40304)	1/6 hp, 125VAC 1/4 hp, 250VAC Pilot duty: C300, R300 except -RG
VDE	IEC/EN61810-1 EN60335-1 clause 15.3; 16.3; 29.1; 29.2; 29.3 EN60730-1 clause 12.2; 13.2; 20.1; 20.2; 20.3	8A, 250 VAC (cosφ=1) 8A, 24VDC (0ms)

FTR-F1 SERIES

CHARACTERISTIC DATA (Reference)

* Characteristic data is not a guaranteed value, but measured values of samples from production line.

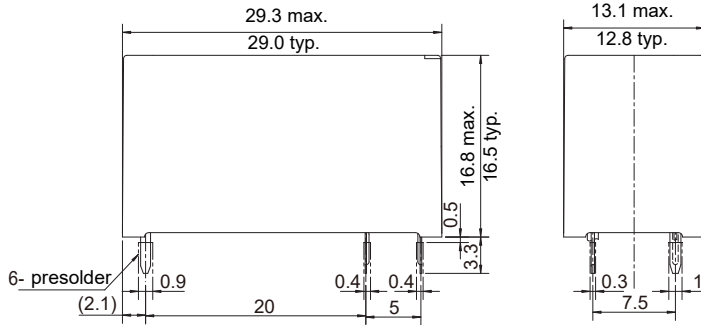


FTR-F1 SERIES

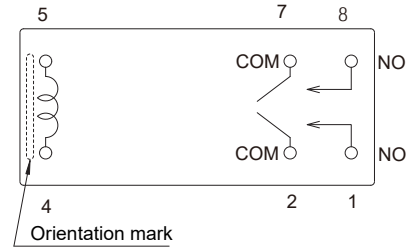
■ DIMENSIONS

FTR-F1A type

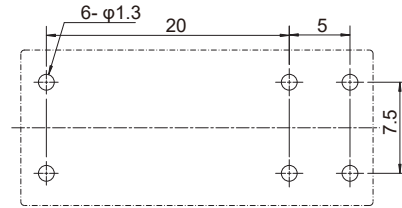
● Dimensions



● Schematics (BOTTOM VIEW)

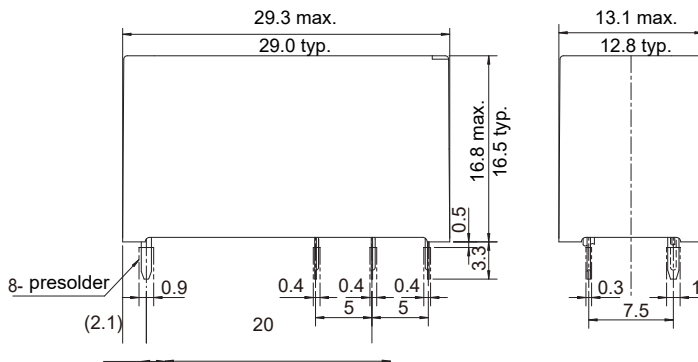


● PC board mounting hole layout (BOTTOM VIEW)

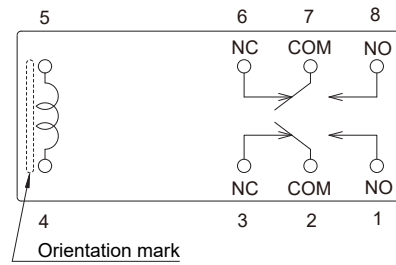


FTR-F1C type

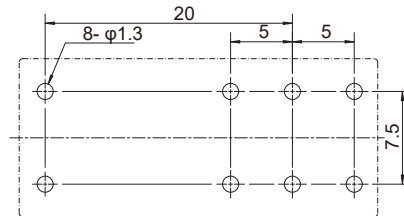
● Dimensions



● Schematics (BOTTOM VIEW)



● PC board mounting hole layout (BOTTOM VIEW)



- * Dimensions of the terminals do not include thickness of pre-solder.
- * Tolerance of PC board mounting hole layout : ± 0.1 unless otherwise specified.

Unit: mm
(): Reference

CAUTIONS

- All values mentioned in this datasheet are provided under ideal conditions. Please perform the confirmation test before actual use.
- Reflow soldering is prohibited.
- Do not use relays in the atmosphere with sulfide gas, chloride gas or nitric oxide. Contact resistance may increase.
- Do not use silicon or silicon-containing product or materials near relays. It may cause contact failure.

GENERAL INFORMATION

1. ROHS Compliance

- All relays produced by FCL Components are compliant with RoHS directive 2011/65/EU, including commission delegated directive 2015/863.

2. Recommended lead free solder condition

- Lead free solder plating on relay terminals is Sn-3.0Ag-0.5Cu, unless otherwise specified. This material has been verified to be compatible with PbSn assembly process.
- Recommended solder for assembly: Sn-3.0Ag-0.5Cu.

Flow Solder Condition:

Pre-Heating: Maximum 120°C within 90 sec.

Soldering: Eip within 5 sec. at 255°C±5°C solder bath

Relay must be cooled by air immediately after soldering

Solder by Soldering Iron:

Soldering Iron: 30-60W

Temperature: Maximum 340-360°C

Duration: Maximum 3 sec.

We highly recommend that you confirm your actual solder conditions

3. Moisture Sensitivity

- Moisture Sensitivity Level standard is not applicable to electromechanical relays, unless otherwise indicated.

4. Tin Whiskers

- Dipped SnAgCu solder is known as presenting a low risk to tin whisker development. No considerable length whisker was found by our in house test.

Contact

Japan

FCL COMPONENTS LIMITED
Shinagawa Seaside Park Tower
12-4, Higashi-shinagawa 4-chome,
Tokyo 140 0002, Japan
Tel: +81-3-3450-1682
Email: fcl-contact@cs.fcl-components.com

North and South America

FCL COMPONENTS AMERICA, INC.
2055 Gateway Place Suite 480,
San Jose, CA 95110 USA
Tel: +1-408-745-4900
Email: fcai.components@fcl-components.com

Europe

FCL COMPONENTS EUROPE B.V.
Diamantlaan 25
2132 WV Hoofddorp, Netherlands
Tel: +31-23-556-0910
Email: info.fceu@cs.fcl-components.com

Asia Pacific

FCL COMPONENTS ASIA PTE LTD.
No. 20 Harbour Drive, #07-01B
Singapore 117612
Tel: +65-6375-8560
Email: fcal@fcl-components.com

China

FCL COMPONENTS (SHANGHAI) CO., LTD.
Unit 1105, Central Park - Jing An,
No.329 Heng Feng Road, Shanghai 200070,
China
Tel: +86-21-3253 0998
Email: fcsh@fcl-components.com

Web: www.fcl-components.com/en/

© 2024 FCL Components Limited. All rights reserved. All trademarks or registered trademarks are the property of their respective owners.

FCL Products are intended for general use, including without limitation, in personal, household and office environments, in buildings and for ordinary use in the industry. FCL Products are not intended to be used in applications where extremely high safety is required ("High Safety Required Applications"), such as, but not limited to, applications in nuclear facilities, in aircraft automatic flight control, in air traffic control, in mass transit system control, in missile launch system, in weapon systems, in medical equipment for life support or any application involving a direct serious risk of physical injury or death.

Please do not use FCL Products without securing the sufficient safety and reliability required for the High Safety Required Applications. In addition, FCL shall not be liable against the customer and/or any third party for any claims or damages arising in connection with the use of FCL Products in the High Safety Required Applications.

FCL warrants that its Products, if properly used and services, will conform to their specification and will be free from defects in material and workmanship for twelve months from delivery.

The implied warranties of merchantability and fitness for a particular purpose and all other warranties, representations and conditions, express or implied by statute, trade usage or otherwise, except as set forth in this warranty, are excluded and shall not apply to the Products delivered.

The contents, data and information in this datasheet are provided by FCL Components Limited as a service only to its user and only for general information purposes. The use of the contents, data and information provided in this datasheet is at the users' own risk.

FCL has assembled this datasheet with care and will endeavor to keep the contents, data and information correct, accurate, comprehensive, complete and up to date.

FCL Components Limited and affiliated companies do however not accept any responsibility or liability on their behalf, nor on behalf of its employees, for any loss or damage, direct, indirect or consequential, with respect to this datasheet, its contents, data, and information and related graphics and the correctness, reliability, accuracy, comprehensiveness, usefulness, availability and completeness thereof.

Nor do FCL Components Limited and affiliated companies accept on their behalf, nor on behalf of its employees, any responsibility or liability with respect to these datasheets, its contents, data, information and related graphics and the correctness, reliability, accuracy, comprehensiveness, usefulness, availability and completeness thereof. Rev. February 1, 2024.
