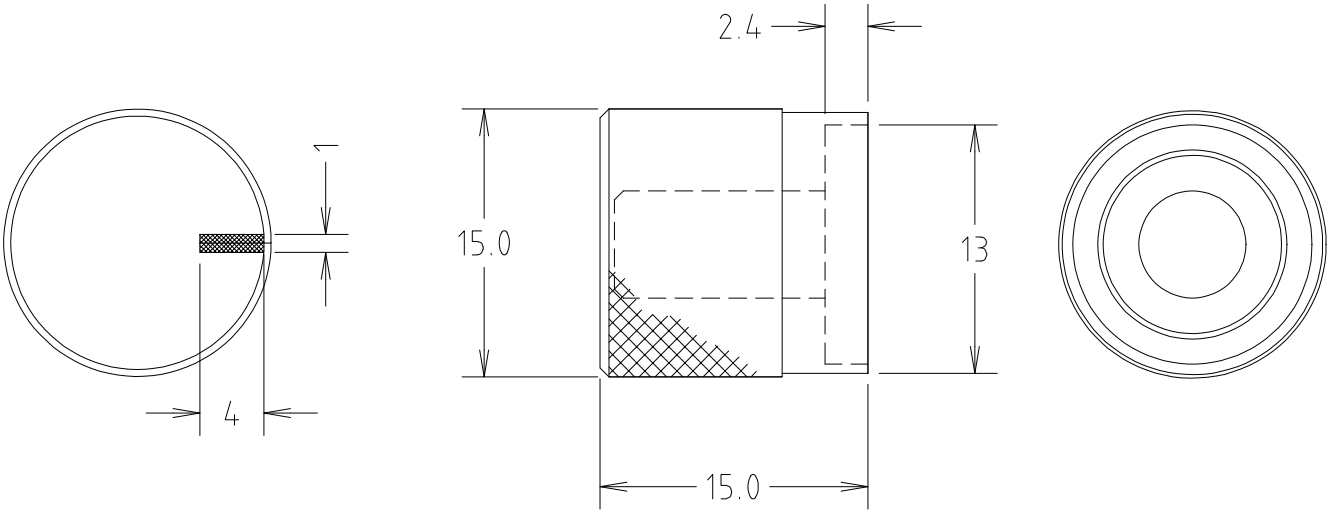




KNOB KM15B

KM15B knob is a knurled aluminium shell on a plastic inner. A high quality, black anodised finish is relieved by bright diamond cut features with a knurled finish on the edge. They can have either a printed marker dot or diamond cut marker line. Push fit only. The shaft is 6mm splined with 18 teeth.



Material: ABS / Aluminium / Polyamide



FCR7223 - KNOB KM15B BLACK MARKER LINE

