



# Product Change Notification

Current Date: 27-Nov-2025

## TE Connectivity

**Product Change Notification:** P-25-029283

**PCN Date:** 25-NOV-25

TE would like to inform you of the following change(s) to the listed TE Connectivity Product. In case of any further questions about this change(s), please contact your TE Connectivity Sales Engineer. Affected part, drawing and/or specification numbers are listed on the attached sheet(s).

**General Product Description:**  
Layout production change

**Description of Changes**  
Due to the installation requirements for a new production line, it is necessary to relocate PSP MQS and PSP Flex machines to the OVM line area. As a direct consequence of this layout change, the inspection stations and MQS 2 POS assembly machine will also be repositioned to ensure continuous, safe, and efficient production flow.  
**Other attachments:**  
[Location change](#)

**Reason for Changes:**  
This adjustment aims to optimize manufacturing floor space, improve production line integration, and ensure operability of the new line while preventing negative impacts on productivity and process quality.

**Estimated Dates:**

<b>Last Order Date</b> (Obsolete Parts Only):	<b>First Date To Ship</b> (Changed Parts Only):
	01-DEC-2025
<b>Last Ship Date</b> (Obsolete Parts Only):	<b>Last Date for Mixed Shipments:</b> (Changed Parts Only):
	No Mixed Shipments

**Part Number(s) being Modified:**

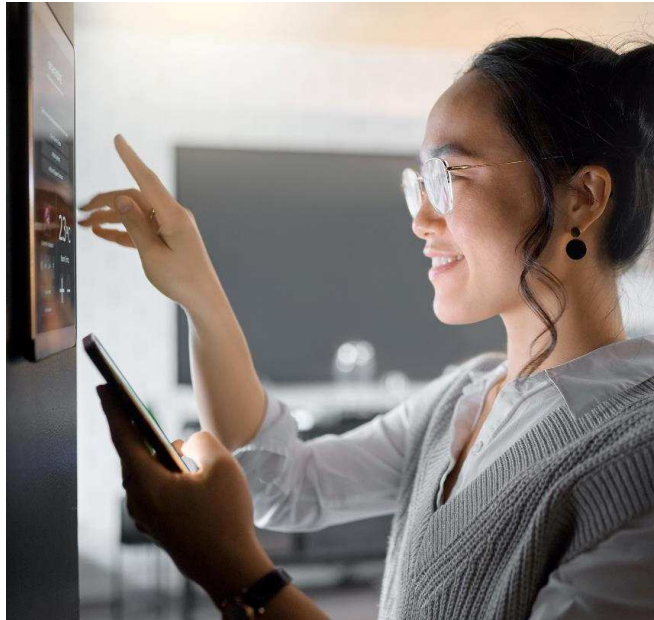
Part Number	Part Discontinued per PCN	Customer Drawing	Alias Part Number(s)	Substitute Part Number	Substitute Alias Part Number(s)	Description Of Difference
<a href="#">1-969850-1</a>	NO					
<a href="#">1-969850-2</a>	NO					

<b>Part Number</b>	<b>Part Discontinued per PCN</b>	<b>Customer Drawing</b>	<b>Alias Part Number(s)</b>	<b>Substitute Part Number</b>	<b>Substitute Alias Part Number(s)</b>	<b>Description Of Difference</b>
<a href="#">1599620-1</a>	NO					
<a href="#">282080-1</a>	NO		"CM8390-000", "AMP-0-0282080-1", "2-42939-6211", "8202611296", "8202613264"			

# Layout Monthly Meeting

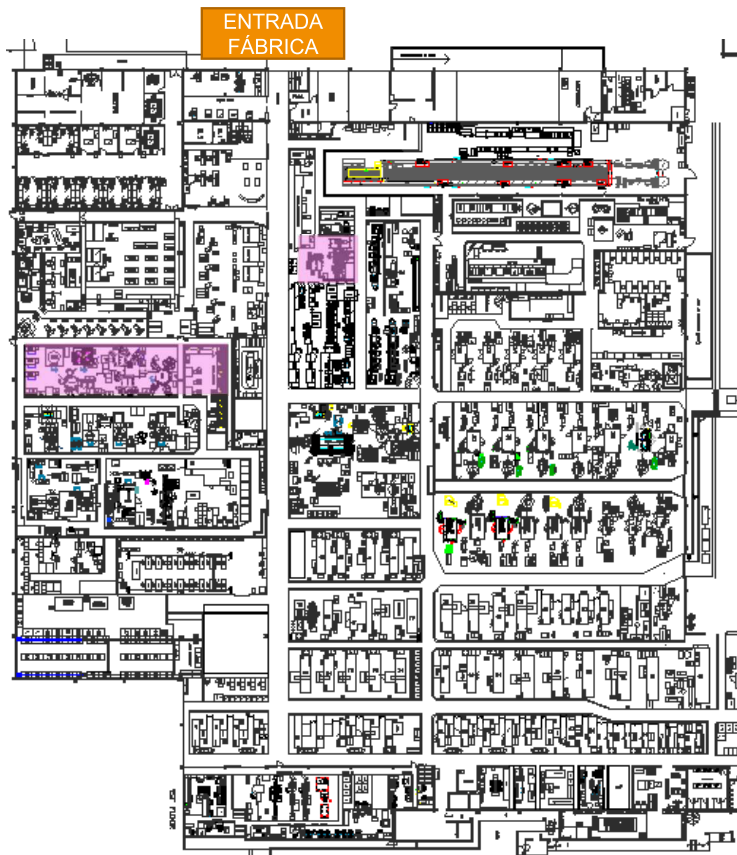
September 2025  
Manufacturing Engineering

EVERY CONNECTION COUNTS



# Proposta – Linha Coax 6 e Máq. Automáticas

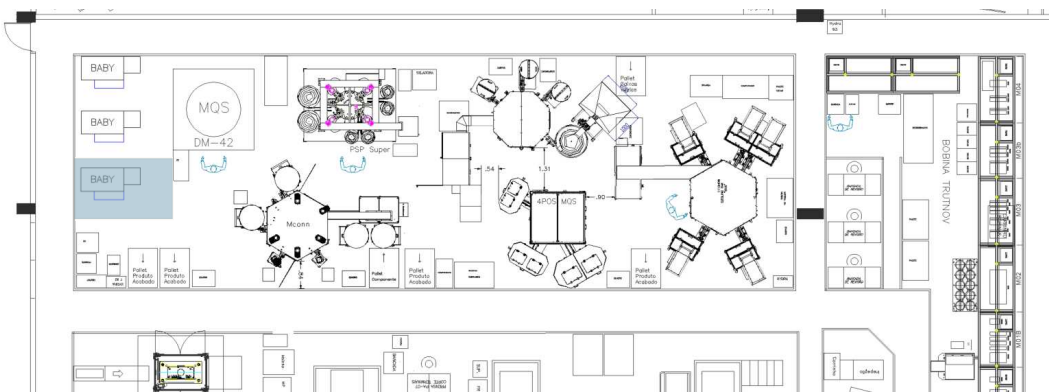
Movimentação de máquinas automáticas (Mechatronics).



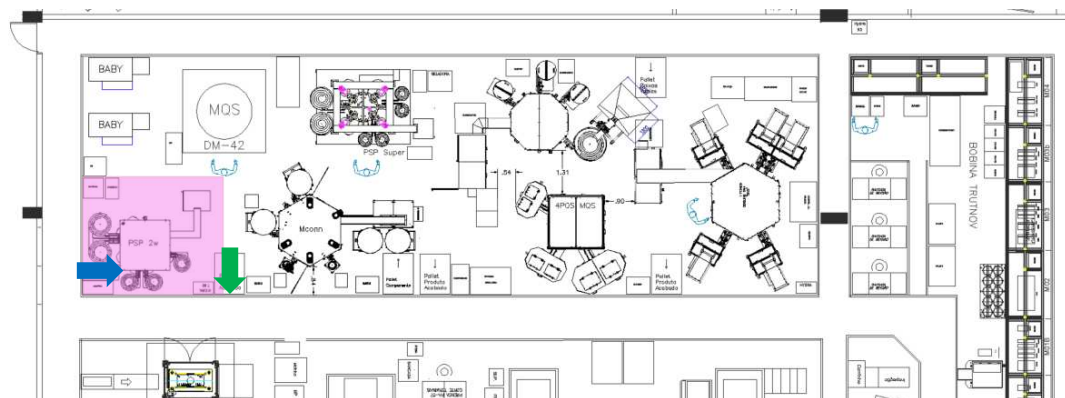
# Proposta – Linha Coax 6 e Máq. Automáticas

Movimentação de máquinas automáticas (Mechatronics).

**CONDIÇÃO ATUAL**



**CONDIÇÃO PROPOSTA**

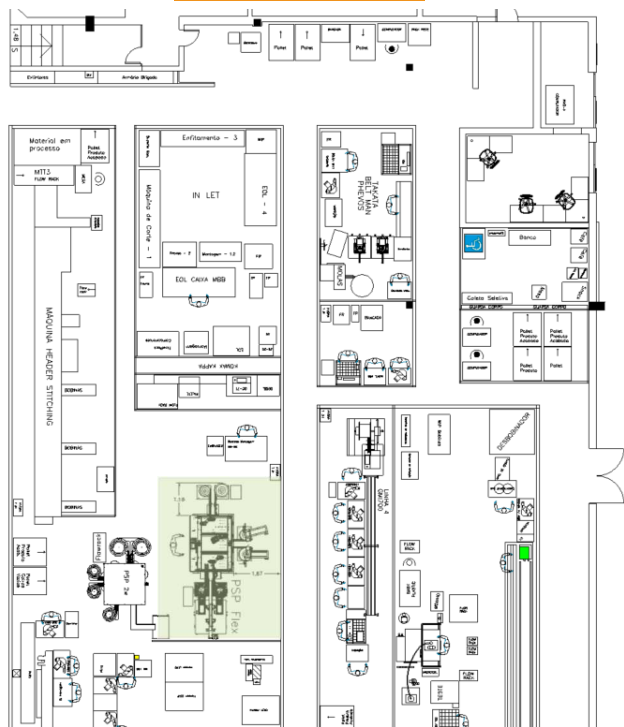


- 1. Injetoras Baby
  - i. 1 sem demanda, desativada e movida para PVI
- 2. PSP 2 vias (Segunda Fase)
  - i. Movimentação de PSP 2 vias

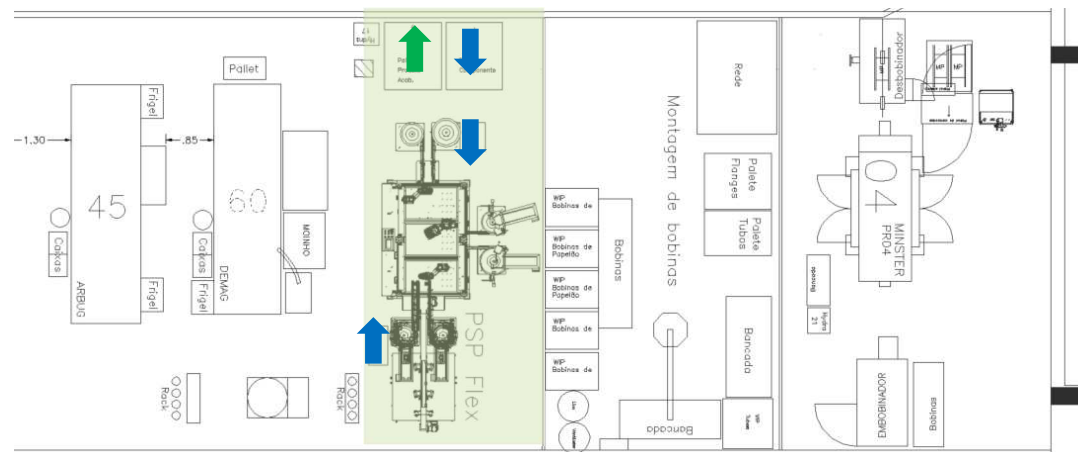
# Proposta – Linha Coax 6 e Máq. Automáticas

Movimentação de máquinas automáticas (Mechatronics).

## CONDIÇÃO ATUAL



## CONDIÇÃO PROPOSTA

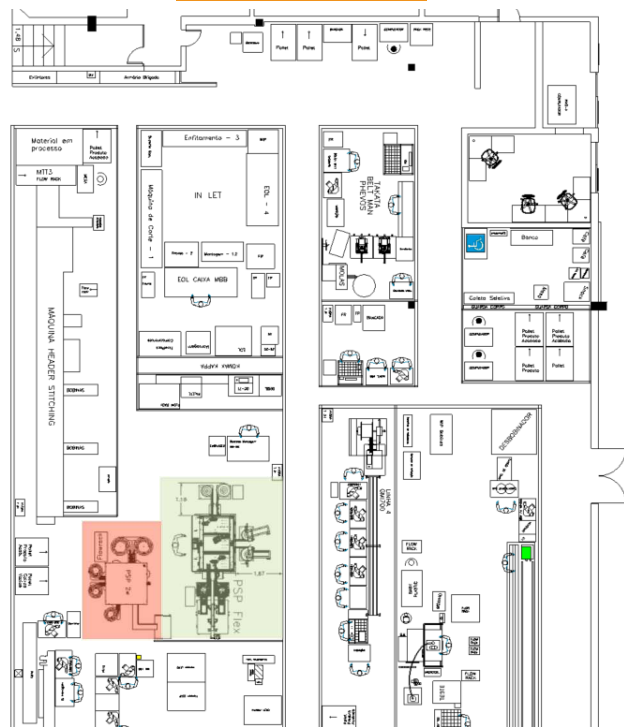


- 1. PSP Flex
  - i. Relocada para antigo local da INJ-56 (atualmente vazio)

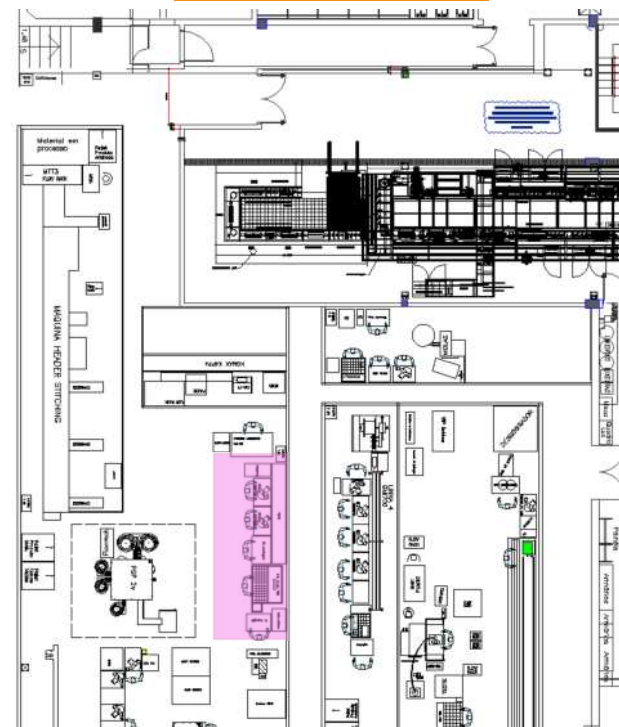
# Proposta – Linha Coax 6 e Máq. Automáticas

Movimentação de máquinas automáticas (Mechatronics).

**CONDIÇÃO ATUAL**



**CONDIÇÃO PROPOSTA**



- 1. Linha Coax 6 – (Out/25 – Wk41)
  - i. Instalação após conclusão da Primeira Fase

---

**ANY  
CONNECTION  
CAN CHANGE  
THE WORLD**

---

EVERY CONNECTION COUNTS

