

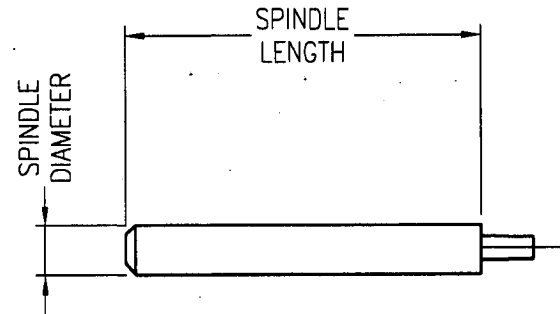
CK
3610

CK ROTARY SWITCH SPECIFICATION

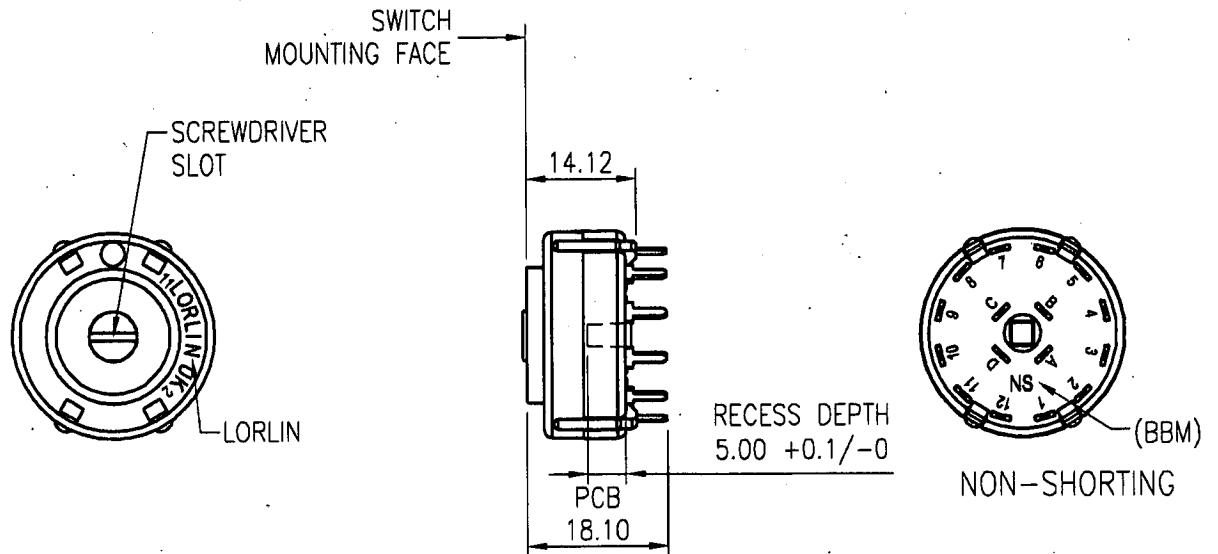
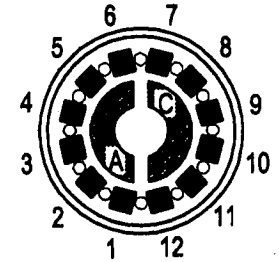
NON-SHORTING PCB GOLD FLASH

CIRCUITRY
2P 6W PCB 30° INDEX GOLD FLASH

SWITCH IDENTS LORLIN NO BUSH NS (BBM)		INSP
BUSH THREAD	NO BUSH	
SPINDLE DIAMETER	∅6.00 +0/-0.15	
SPINDLE LENGTH FROM S.M.F	46.0 +0.5/-0	
SCREWDRIVER SLOT	1.0mm WIDE X 1.5mm DEEP	
LUBRICATION OF WAFER	NO	
LUBRICATION OF MECHANISM	YES	
NUT & WASHER REQUIRED	NO	



VIEW ON INSIDE
NON-SHORTING (BBM) WAFER



NOTES INTERNAL MOULDED STOP AT 6. NO BUSH
USE LIGHT ACTION SPRING
SPECIAL REAR DRIVE SPINDLE LOOSE

CUSTOMER

DRAWN	RP	DATE	21/12/09
APPROVED		ISSUE	10

ALL DIMENSIONS IN mm
GEN TOLERANCE +/- 0.3mm

LORLIN ELECTRONICS

PART No.
CK
3610