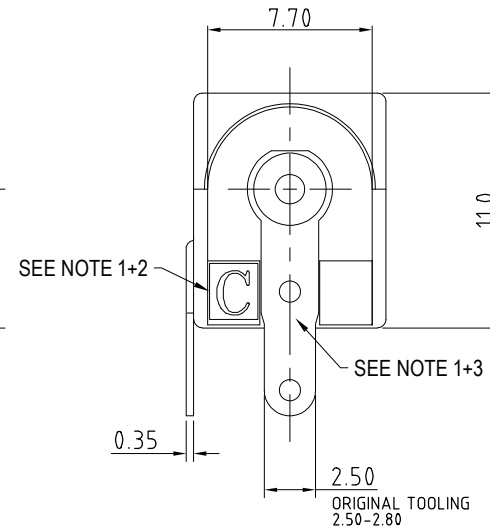
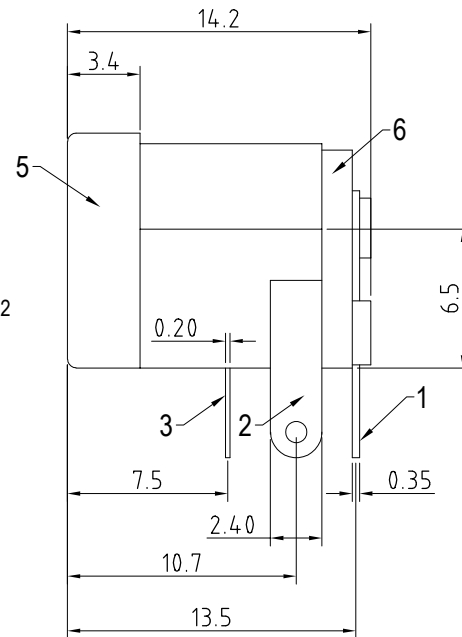
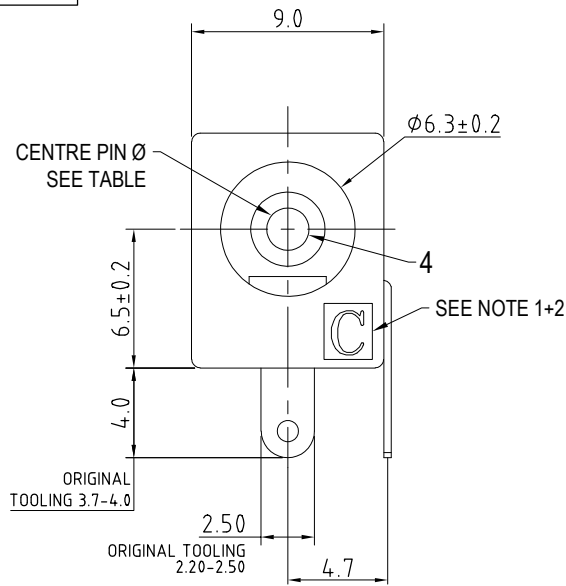
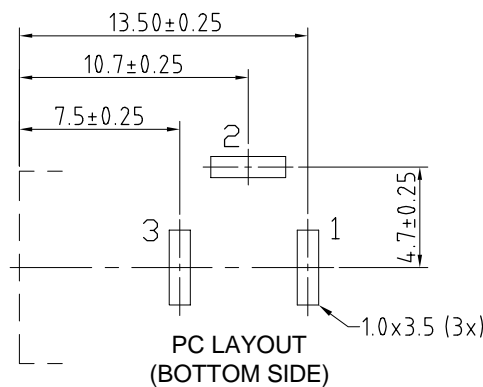


RATED 12V DC - 5A (60VA)

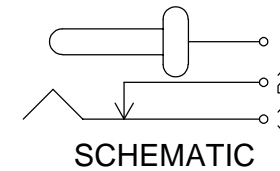
ISS.	AMEND	DATE
1	REDRAWN	29/05/90
2	ERROR CORRECTED	01/11/90
3	MATERIAL PBT	14/02/91
4	P/Nos ADDED	17/02/94
5	RoHS+PC LAYOUT	24/07/09
6	PIN NUMBERS ADDED	20/08/12
7	MULTIPLE TOOL INFO	21/02/13
8	PIN OUT TOL ADD	04/03/13
9	Ø2.10 WAS Ø2.00	31/10/14
10	PIN TOL AMENDED	21/08/17
11	UPDATED, ADD TABLES	08/05/24



NEW TOOLING



PART No.	MODEL	CTR PIN
FC68148	DC-10A	Ø2.1
FC68149	DC-10B	Ø2.5



ORIGINAL TOOLING

ITEM	DESCRIPTION	MATERIAL	FINISH
1	CONTACT	BRASS	TIN PLATE
2	CONTACT	BRASS	TIN PLATE
3	SPRING CONTACT	PH.BRONZE	TIN PLATE
4	CENTRE PIN	BRASS	NICKEL PLATE
5	HOUSING	PBT V0	BLACK
6	REAR COVER	PBT V0	BLACK

NOTES

- MULTIPLE TOOLS ARE USED FOR THIS PART.
- CLIFF** LOGO CAN BE ON FRONT OR REAR AS SHOWN.
- REAR CONTACT APPEARANCE MAY CHANGE.
- PIN LAYOUT APPLIES TO ALL PRODUCTS. SEE IMAGES FOR VARIATIONS.

RoHS
COMPLIANT

TOLERANCE
NO DEC. PLACE ± 0.20
1 DEC. PLACE ± 0.15
2 DEC. PLACE ± 0.10
HOLE Ø ± 0.10
ANGLES ± 1/2°
UNLESS OTHERWISE STATED

Cliff Electronic Components Ltd.

76 Holmetherpe Avenue, Holmetherpe Industrial Estate,
Redhill, Surrey, RH1 2PF, England, UK
Tel: 01737-771375 Fax: 01737-766012 Website: www.cliffuk.co.uk

DIMENSIONS IN MILLIMETERS UNLESS OTHERWISE STATED. WORK TO DIMENSIONS. REMOVE ALL BURRS. IF IN DOUBT ASK.

3rd ANGLE PROJECTION:

MATERIAL: SEE TABLE

FINISH: SEE TABLE

TITLE: DC POWER SOCKET DC10

THE CONTENTS OF THIS DOCUMENT MUST NOT BE COPIED OR DISCLOSED TO A 3rd PARTY WITHOUT WRITTEN PERMISSION OF CLIFF UK. © 1990

DRAWN: C.A.M.J.

APPROVED: R.W.T.

DRWG. No. **FC68148**

FORM: A4DRWGH

DO NOT SCALE